

## Apple Tree Grove, SW16

£825,000

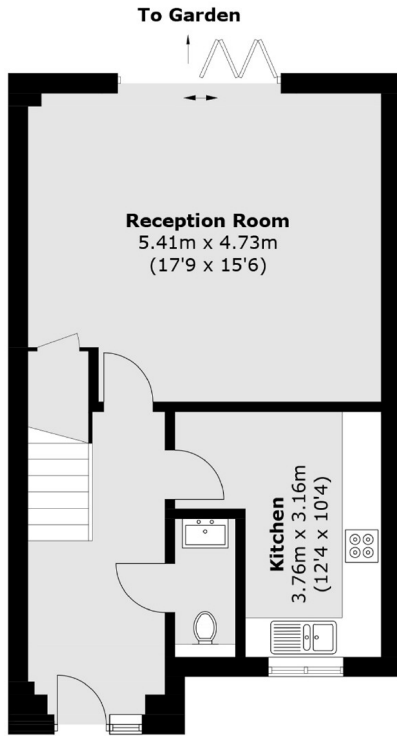
\* Featured Property - Last House Remaining \* Apple Tree Grove is a small residential cul-de-sac of just five brand new family 4 & 5 bedroom houses located within a pleasant residential suburban area. These beautifully designed homes offer spacious accommodation and have light and airy interiors.

Situated in Norbury, a sought-after town just 10.5 miles from Charing Cross, Apple Tree Grove provides excellent connectivity to central London while retaining the appeal of suburban living. Norbury is well-regarded for its vibrant mix of shops, restaurants, and leisure amenities, alongside highly regarded schools and abundant parks, riversides and golf courses.

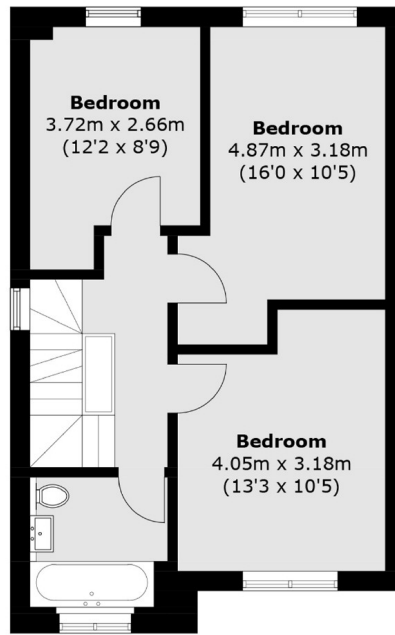
### Features

- Detached House
- Four Bedrooms
- Two Bathrooms
- Freehold House
- Private Gated Road
- Private Garden
- Two Allocated Parking Spaces
- Ground Floor Under-Floor Heating
- Bosch Appliances
- LED Mood Lighting In Lounge

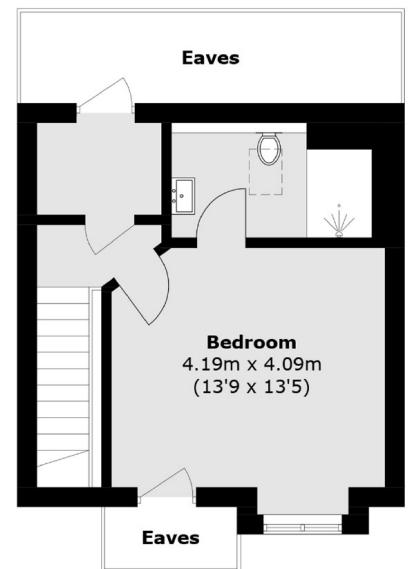
# Apple Tree Grove, Streatham, SW16



**Ground Floor**



**First Floor**



**Second Floor**

Total area (approx.): 126.3 sq. m (1,359.5 sq. ft)  
(Excluding Eaves)