



77 Snowhill Drive, Witney



## 77 Snowhill Drive

Located on the ever-popular Deer Park development is this beautifully-presented two-bedroom home with garage and off-street parking.

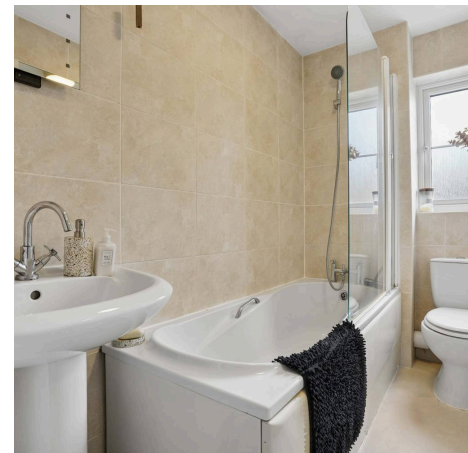
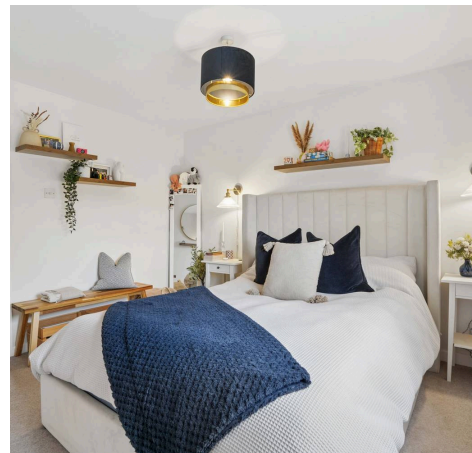
Council Tax band: C

Tenure: Freehold

EPC Energy Efficiency Rating: C

EPC Environmental Impact Rating: C

- Located on the ever-popular Deer Park development is this beautifully-presented two-bedroom home.
- Open plan sitting/dining room with french doors leading out to the rear garden.
- Bathroom with bath and shower over.
- Garage with off-street parking space.
- Master bedroom with built-in wardrobe.
- Landscaped rear garden with extended patio, lawn and gravelled seating area.



# Snowhill Drive - Witney

Approximate Gross Internal Area = 53.9 sq m / 580 sq ft

Garage = 13.6 sq m / 146 sq ft

Total = 67.5 sq m / 726 sq ft



Illustration for identification purposes only, measurements are approximate, not to scale. Fourlabs.co © (ID1281145)



## Simpsons Witney Branch

4 Langdale Court Witney, Oxfordshire - OX28 6AD

01993 835030 • [witney@simpsonsproperty.com](mailto:witney@simpsonsproperty.com) • [www.simpsonsproperty.com/](http://www.simpsonsproperty.com/)