



## Tressillian Road, SE4

### £700,000

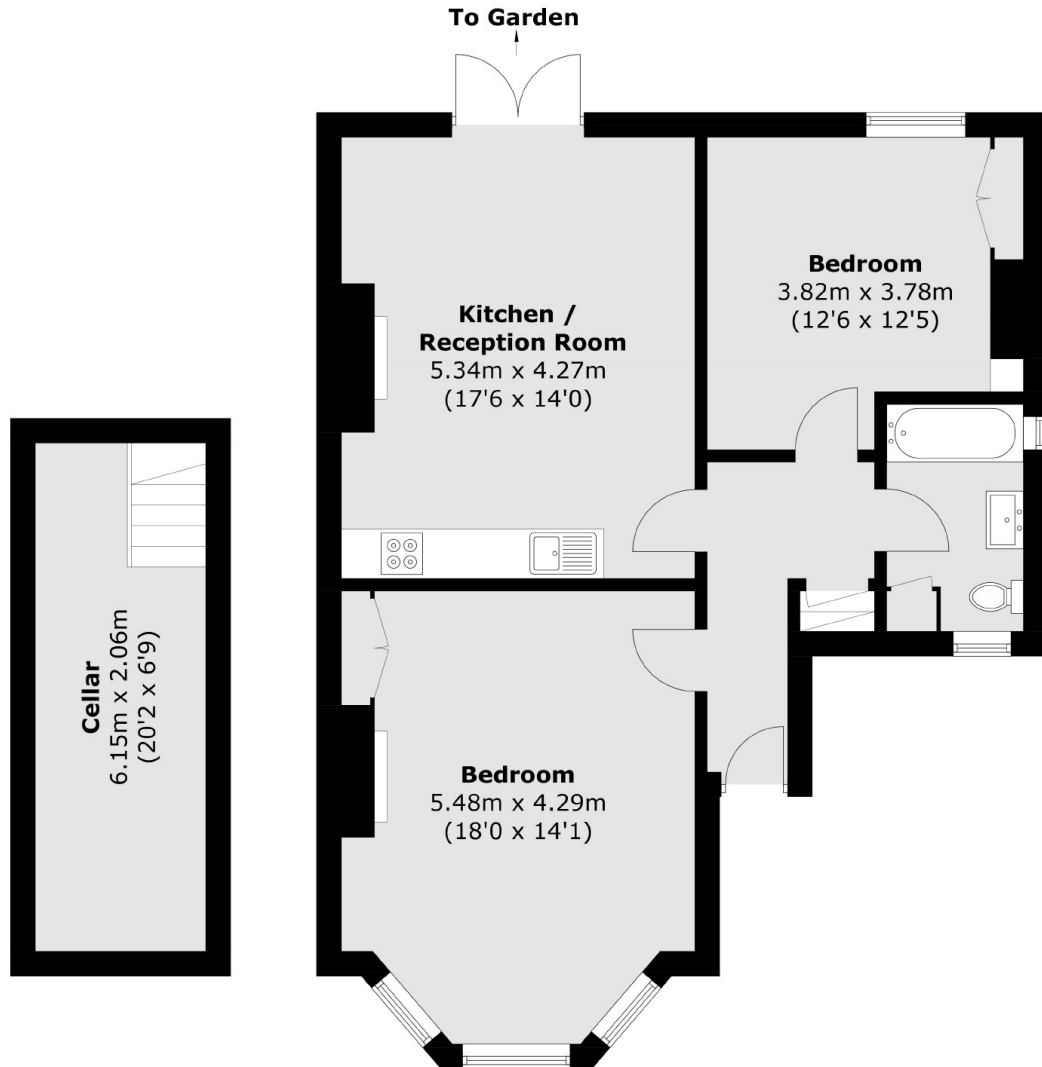
A delightful very well presented share of freehold period conversion set within an imposing Victorian building. There are two double bedrooms, a stylish kitchen/reception room with direct access onto a private west-facing garden.

Tressillian Road is a highly sought after road in the Brockley Conservation area with excellent transport links from Brockley, St. John's and Ladywell train stations.

### Features

- Two Bedrooms
- Large Reception
- Brockley Conservation
- Share Of Freehold
- Private Garden
- 899 Sq Ft

# Tressillian Road, London, SE4



**Cellar**

**Ground Floor**

Total area (approx.): 83.6 sq. m (899.9 sq. ft)