

shepherds

A better home
moving experience



137 Newland Gardens

Hertford, SG13 7WY

Price Guide £310,000



137 Newland Gardens

Hertford, SG13 7WY

Spacious Two-Bedroom First Floor Apartment in Popular East Side Development

Set within a highly sought-after development on the east side of town, this bright and spacious two double bedroom first-floor apartment offers an ideal combination of comfort, convenience, and modern living. Located within walking distance of Hertford East train station and the town centre, residents benefit from easy access to shops, restaurants, cafes, and a wide range of local amenities.

The apartment is accessed via lift or stairs, providing flexibility and ease of use, and includes the added security of a gated underground car park with allocated parking and additional visitor spaces. For those who enjoy staying active, the development also features a residents-only gym, offering the perfect opportunity to maintain a healthy lifestyle without leaving home.

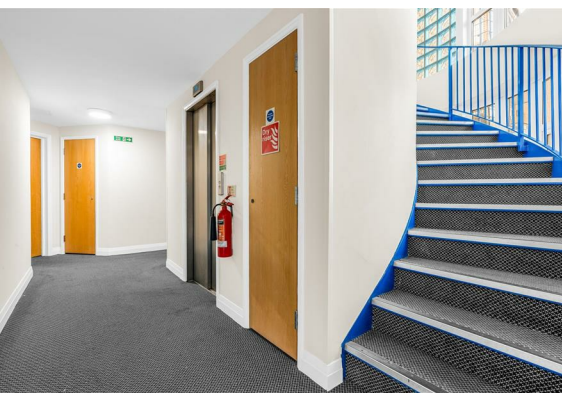
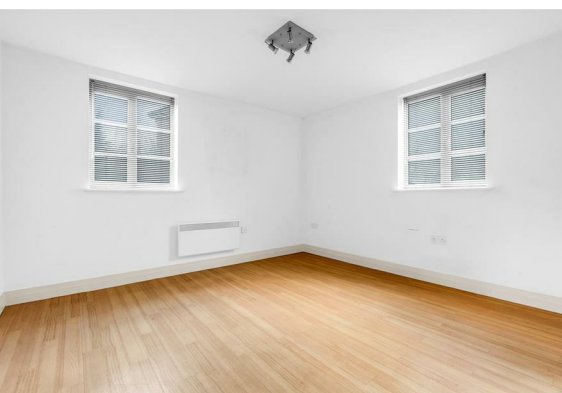
Inside, the generous lounge/diner is filled with natural light and overlooks the beautifully maintained communal gardens, creating a tranquil and inviting space to relax or entertain. The master bedroom benefits from a private ensuite, complemented by a well-appointed main bathroom, while both bedrooms offer ample space and storage.

Offered chain-free and with a long lease of 975 years remaining, this apartment presents an excellent opportunity for first-time buyers, downsizers, or investors seeking a ready-to-move-in home in a convenient and highly desirable location.

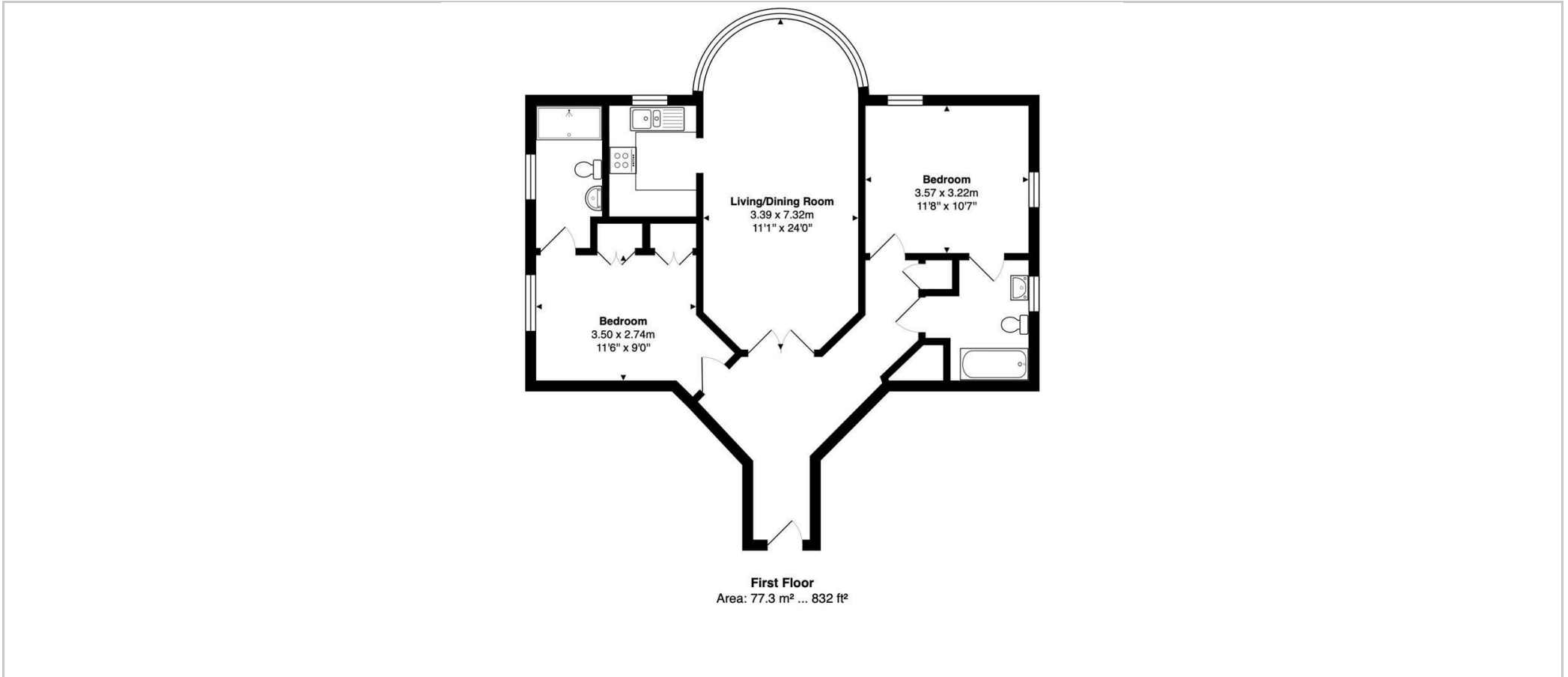




- Two double bedroom first floor apartment
 - Offered chain free
 - Spacious lounge/diner overlooking the communal gardens
 - Ensuite to master bedroom plus main bathroom
 - Secure gated underground parking plus visitors parking
 - Lease with 975 years remaining
 - Easy access to Hertford East train station and the town centre
- Leasehold 975 years remaining
Service Charge - £3,000 per annum
Ground Rent - £270 per annum



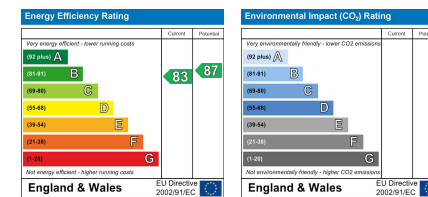
Floor Plan



Viewing

Please contact Shepherds of Hertford on 01992 551955 if you wish to arrange a viewing appointment for this property or require further information.

Energy Performance Graph



These particulars, whilst believed to be accurate are set out as a general outline only for guidance and do not constitute any part of an offer or contract. Intending purchasers should not rely on them as statements of representation of fact, but must satisfy themselves by inspection or otherwise as to their accuracy. No person in this firm's employment has the authority to make or give any representation or warranty in respect of the property.

Riverside House, 6 Millbridge, Hertford, SG14 1PY
 Tel: 01992 551955 Email: enquiries@shepherdsfhertford.co.uk