



Gray Street, SE1

£600,000

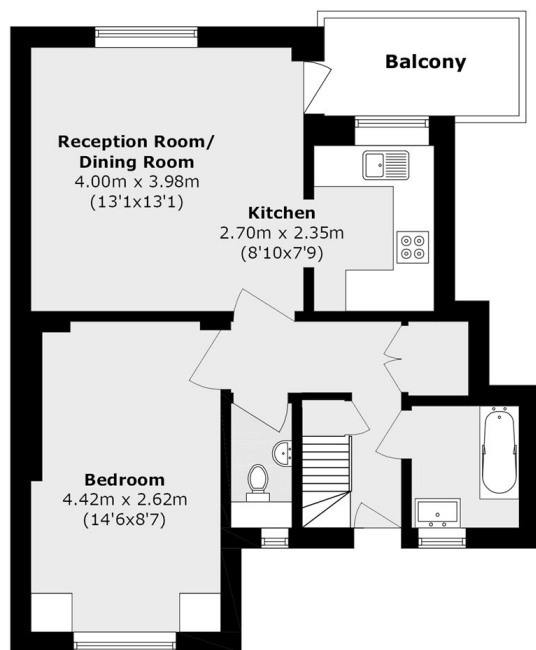
This rarely available duplex apartment offers four well-proportioned double bedrooms, a generous reception room, a separate kitchen and a south-facing balcony, complemented by a modern bathroom and separate WC. Sold chain free.

Gray Street is superbly located, with excellent transport links nearby including Waterloo and Southwark stations. The area offers easy access to the very best of Central London, such as Covent Garden, the Southbank, Lower Marsh and Borough Market, all renowned for their outstanding selection of restaurants, bars and theatres.

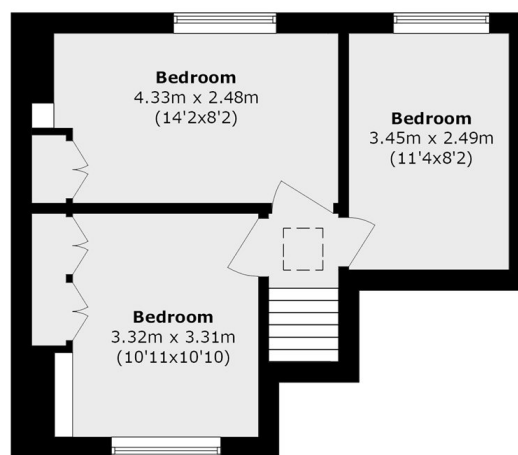
Features

- Four Double Bedrooms
- Duplex Apartment
- Over 850 Sq Ft
- Private Balcony
- South Facing Aspect
- Large Living Room & Kitchen
- Chain Free Sale

Gray Street, London, SE1



Third Floor



Fourth Floor

Total area (approx.): 79.8 sq. m (859.0 sq. ft)

Balcony area (approx.): 4.7 sq. m (50.6 sq. ft)