



FULHAM PALACE ROAD, SW6

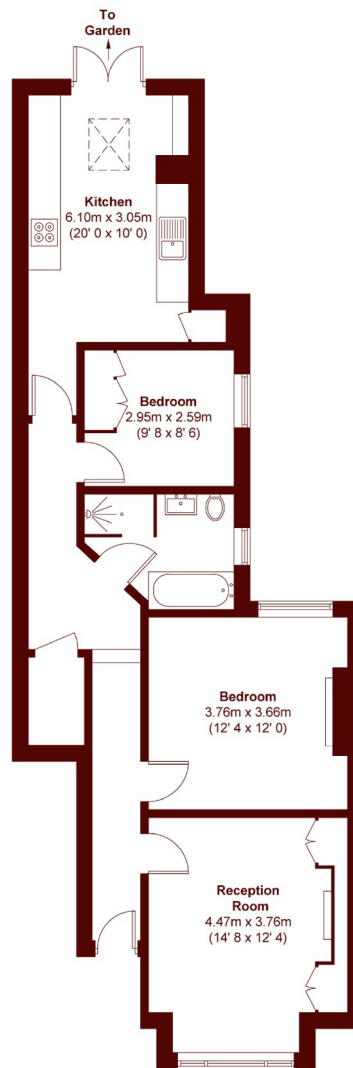
£650,000

An immaculately refurbished two double bedroom ground floor Victorian flat with a private garden. Comprising of a bay-fronted reception room with original fireplace and high ceilings, two double bedrooms, beautiful

Two double bedrooms
Leasehold
Large private garden

Ground floor flat
Excellent transport links
Modern kitchen

STEP INSIDE FULHAM PALACE ROAD



Ground Floor

APPROX. GROSS INTERNAL FLOOR AREA
812 SQFT / 75.4 SQM

Bishops Park
020 7993 9888

Energy Rating: D We aim to make our particulars both accurate and reliable. However, they are not guaranteed; nor do they form part of an offer or contract. If you require clarification on any points then please contact us, especially if you're traveling some distance to view. Please note that appliances and heating systems have not been tested and therefore no warranties can be given as to their good working order

**MARSH &
PARSONS**