



Whitehall Park Road, W4
£1,350,000

Dexters



Whitehall Park Road, W4

Offers in excess of A charming four double bedroom Victorian family home in the heart of Grove Park, perfectly retaining its original period features. The property offers generous living space, a cellar and a substantial west-facing garden with ample room for a home office or garden studio

The ground floor comprises a bright front reception room with a large bay window and a fully extended kitchen/dining room, creating an excellent space for both family living and entertaining. French doors lead directly onto the well-maintained west-facing garden, while a useful cellar provides additional storage.

On the first floor are three double bedrooms and a family bathroom, with the largest bedroom to the front benefiting from an attractive bay window. To the top floor is a spacious principal bedroom with a Juliet balcony, served by a further bathroom with a bathtub and walk-shower.

Whitehall Park Road is a no-through road, moments from Chiswick House & Gardens, the River Thames and Chiswick High Road. Gunnersbury and Chiswick stations are nearby, offering excellent connections into Central London, while the A4 and M4 provide easy access to Heathrow and beyond. Popular local amenities include Grove Park Deli and Copper Cow.

Features

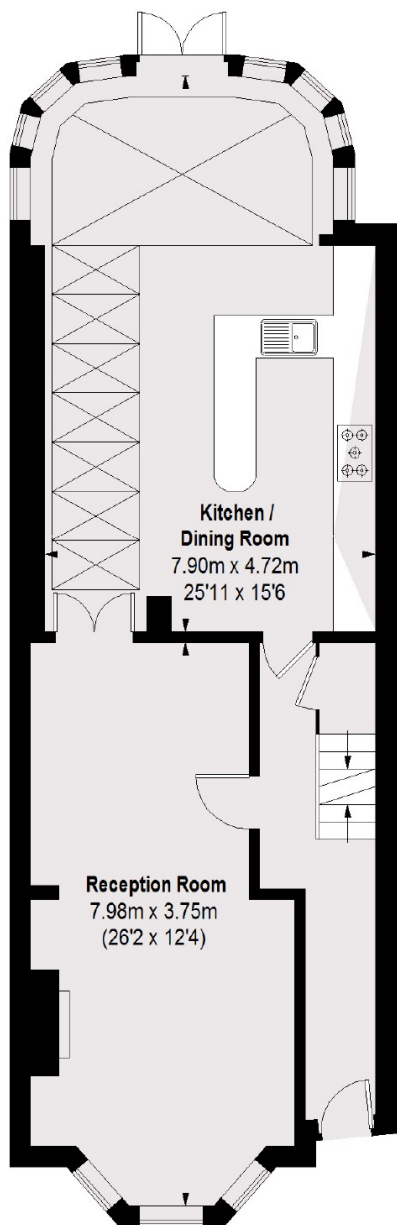
- Victorian Home
- Four Double Bedrooms
- Two Bathrooms
- West-Facing Garden
- School Catchment
- No Onward Chain



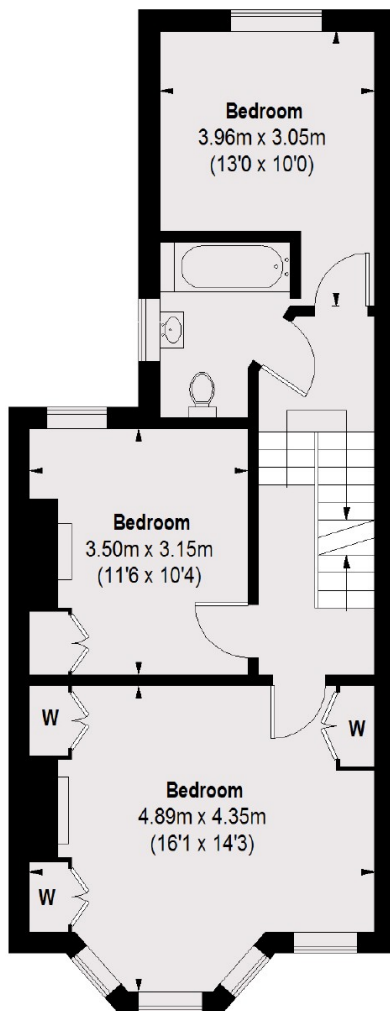




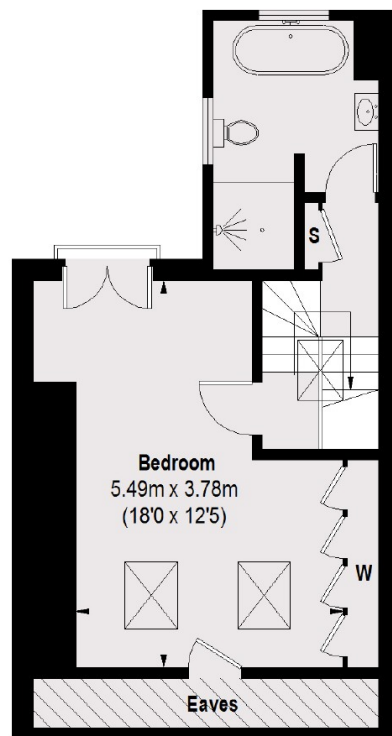
Whitehall Park Road, London, W4



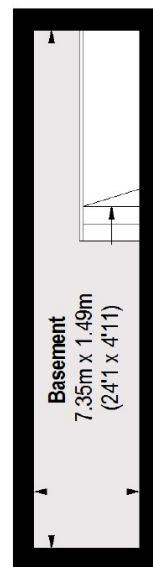
GROUND FLOOR



FIRST FLOOR



SECOND FLOOR



BASEMENT

TOTAL APPROX. FLOOR AREA (EXCLUDING EAVES)
1844 SQ. FT. (171.29 SQ. M.)