

Meridian Place London

£623 Per Week

Districts London are proud to present this stunning two-bedroom apartment with Panoramic Water views located in Canary Wharf. This spacious and beautifully presented apartment offers modern living with breath-taking scenery.

The property features tasteful, contemporary furnishings throughout making it perfect for entertaining or relaxing while enjoying the impressive waterside outlook. It also boasts a separate, fully fitted kitchen equipped with modern appliances, including a ceramic induction hob, offering both style and practicality. Not to mention there are also two generous double bedrooms, one of which benefits from an en-suite bathroom.

****Photos have been digitally dressed for example purposes.**

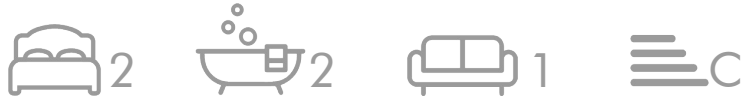
The Meridian Place development is within walking distance of South Quay DLR Station and Canary Wharf Underground Station (Jubilee line and Elizabeth Line), providing excellent transport links into the city and beyond. This beautiful apartment combines space, light, and an unbeatable location ideal for professionals or anyone seeking vibrant Docklands living with tranquil views.

Council Tax Band: Tower Hamlets - F
Minimum contract: 12 months
Change of contract fee: £50 including VAT
Holding Deposit - £623 (1 weeks rent, subject to agreed offer)

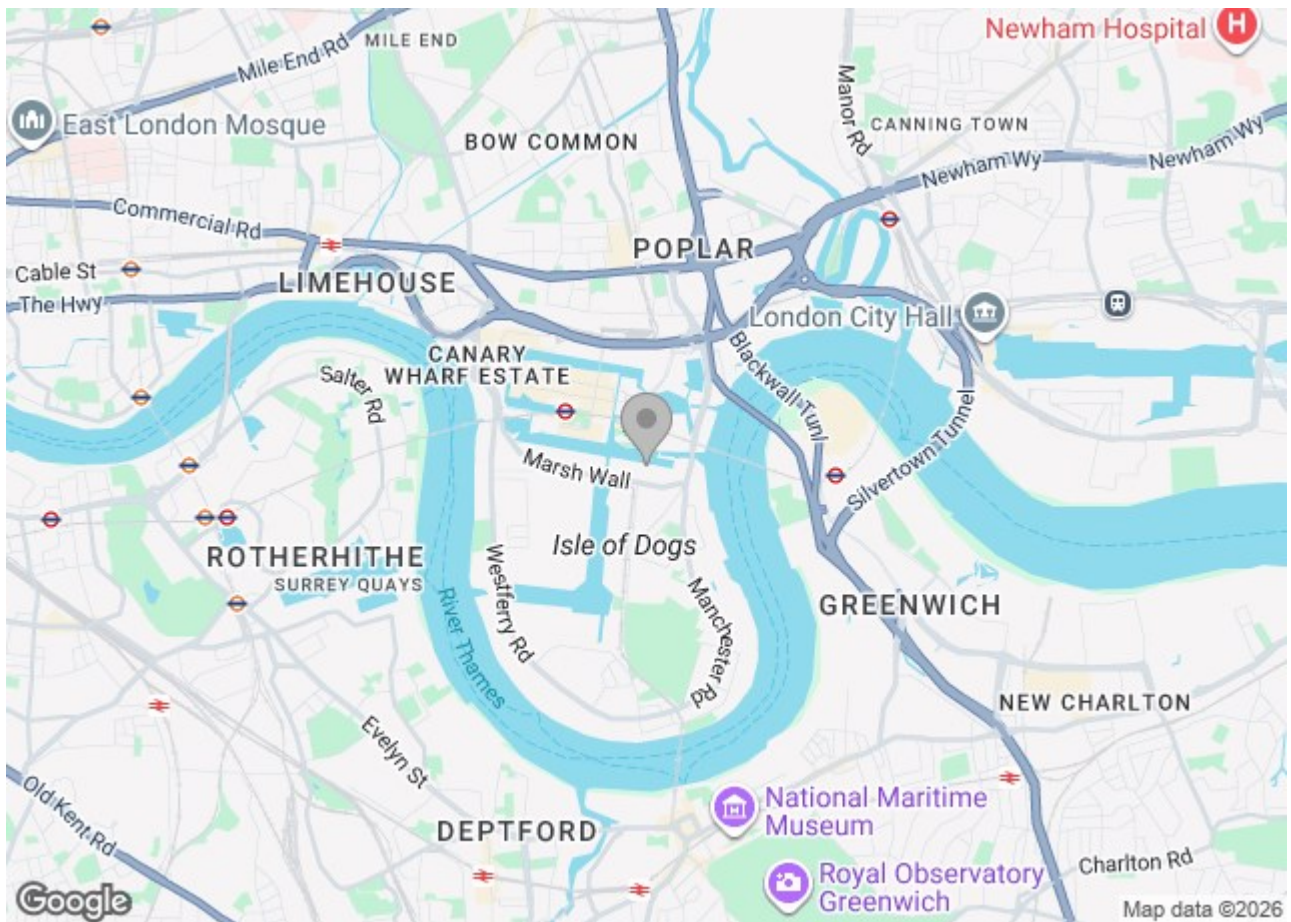
Electricity supply – Mains | Cold Water supply – Mains | Sewerage – Mains | Hot water & Heating – Mains |

To check broadband and mobile phone coverage please visit Ofcom.
To check planning permission please visit Tower Hamlets Council Planning & Building

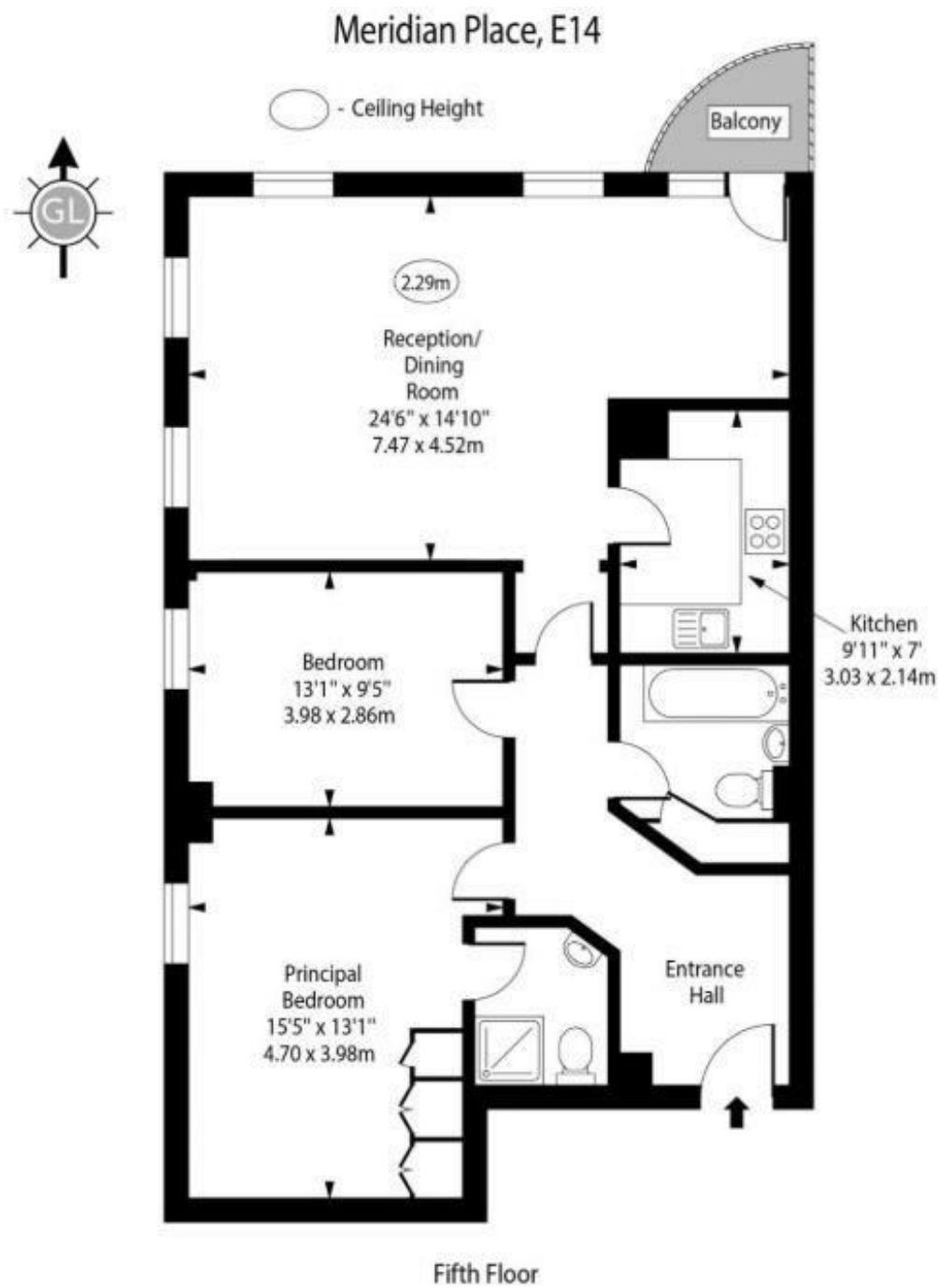
Meridian Place London



- Stunning two-bedroom
- Fully fitted kitchen equipped with modern appliances
- En-suite bathroom
- Walking distance of South Quay DLR Station







Approx Gross Internal Area 934 Sq Ft - 86.77 Sq M

Every attempt has been made to ensure the accuracy of the floor plan shown.
However, all measurements, fixtures, fittings, and data shown are approximate interpretations and
for illustrative purposes only. Measured according to the RICS. Not To Scale.

These particulars, whilst believed to be accurate are set out as a general outline only for guidance and do not constitute any part of an offer or contract. Intending purchasers should not rely on them as statements of representation of fact, but must satisfy themselves by inspection or otherwise as to their accuracy. No person in this firm's employment has the authority to make or give any representation or warranty in respect of the property.

