



# KENSINGTON GARDENS SQUARE

*London W2*

*£1,000,000*

2 Bed | 2 Bath | 948sqft

**SANDERSONS**  
LONDON



# *A Landmark Residence in the Westbourne Grove area of Notting Hill*

A stylish two-bedroom, two-bathroom mews house set within a sought-after development in the heart of the Westbourne Grove area of Notting Hill.

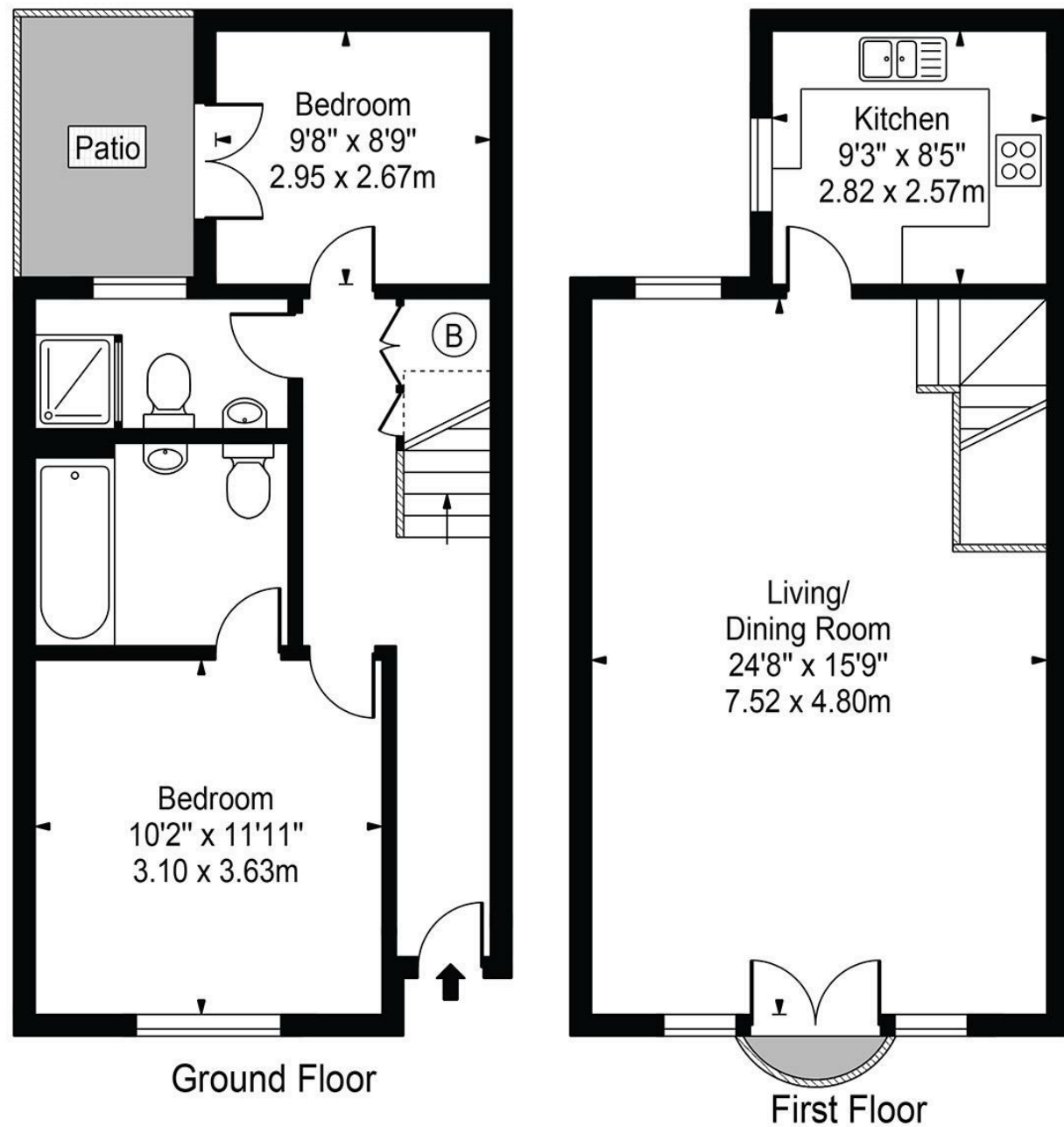
Extending to approximately 948 sq ft, the property benefits from private outdoor space and access to an exceptional range of resident amenities, including a concierge service, gym, swimming pool, sauna, golf simulator and underground parking.

Ideally located moments from the vibrant restaurants, cafés, and boutiques of Westbourne Grove, the house is also conveniently positioned just 0.3 miles from Bayswater Underground Station and 0.4 miles from Queensway Underground Station.



# Kensington Gardens Square, W2

Approx. Gross Internal Area 948 Sq Ft - 88.07 Sq M

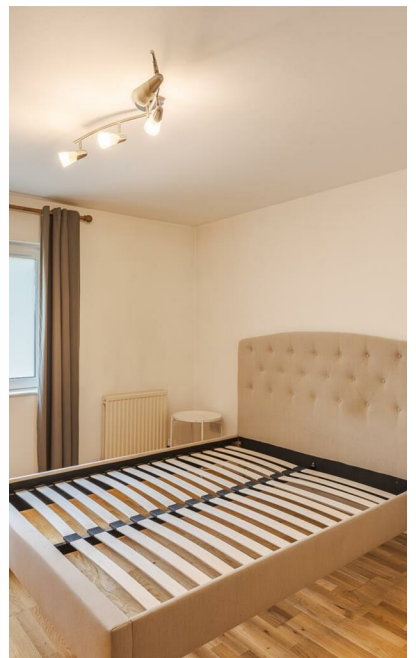


For Illustration Purposes Only - Not To Scale

This floor plan should be used as a general outline for guidance only and does not constitute in whole or in part an offer or contract. Any intending purchaser or lessee should satisfy themselves by inspection, searches, enquiries and full survey as to the correctness of each statement. Any areas, measurements or distances quoted are approximate and should not be used to value a property or be the basis of any sale or let.

## KEY FEATURES

- Modern two-bedroom mews house
- Two bathrooms
- Spacious 948 sqft layout
- Private outdoor space
- Concierge, gym, and pool access
- Near Bayswater and Queensway stations
- Located in Notting Hill
- Underground Parking






EPC Rating: | Council Tax Band: G

## SANDERSONS

LONDON

 108 Holland Park Avenue, London,  
W11 4UA

 020 7602 6725

 james@sandersonslondon.co.uk

 sandersonslondon.co.uk