

# Churchills

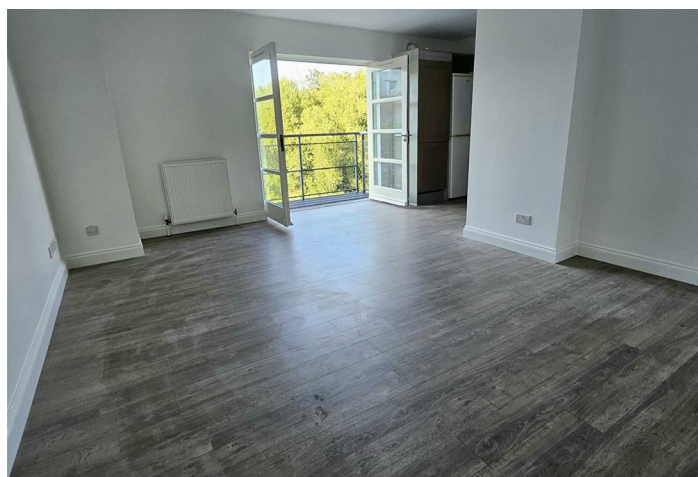


## Green Lane

Shalesmoor, Sheffield S3 8SH

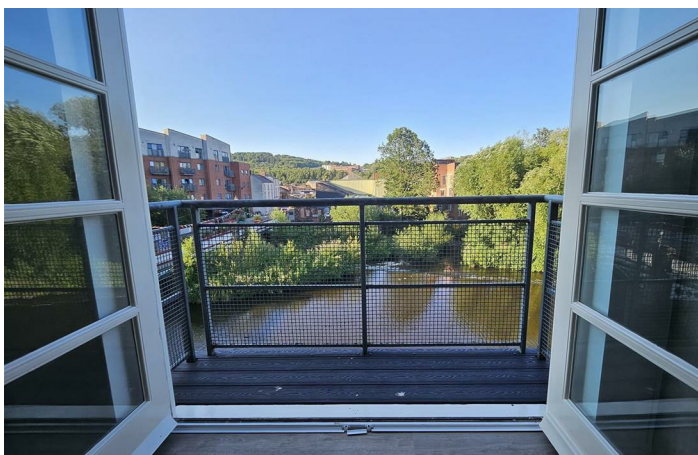
- SECOND FLOOR APARTMENT
  - SPACIOUS LIVING
  - ON SITE GYM
  - SECURITY ACCESS
- SCENIC CANAL VIEWS
- TWO BEDROOMS
- ALLOCATED PARKING
- EPC RATING TBC

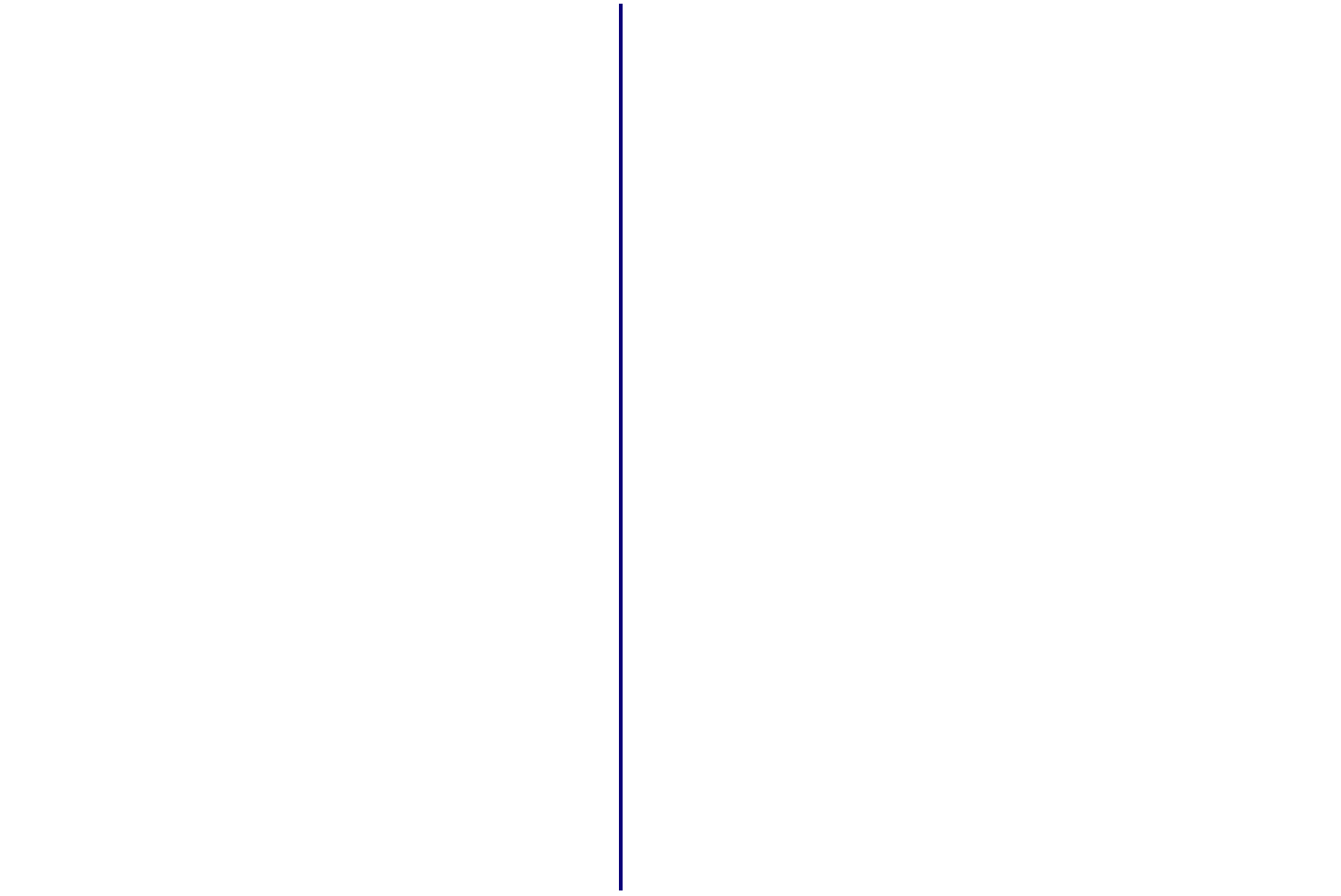
**£975 Per Month**





Location





**Local Authority Sheffield**  
**Council Tax Band C**  
**EPC Rating**



**Churchills Lettings Office**

16 High Street, Mexborough, South  
Yorkshire, S64 9AS

**Contact**

01709 582880  
[Info@churchillsestateagents.com](mailto:Info@churchillsestateagents.com)  
[www.churchillsestateagents.com](http://www.churchillsestateagents.com)

Agents Note: Whilst every care has been taken to prepare these particulars, they are for guidance purposes only. All measurements are approximate and for general guidance purposes only and whilst every care has been taken to ensure accuracy, they should not be relied upon and potential buyers/tenants are advised to recheck the measurements.