

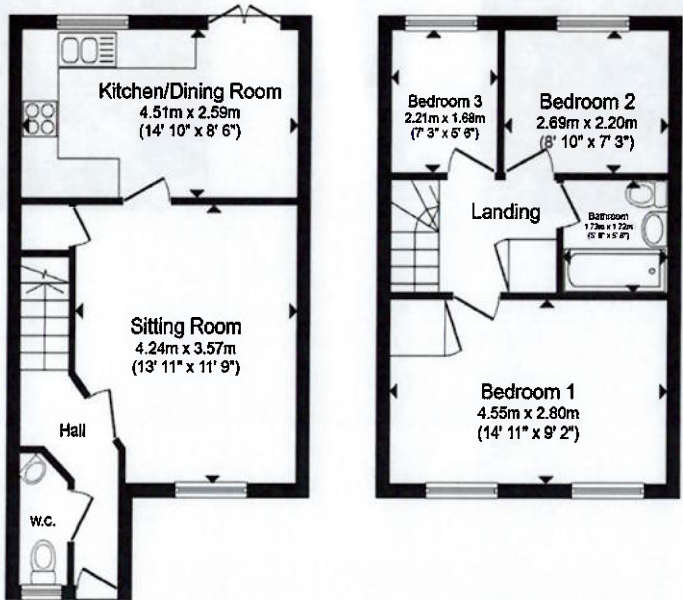
# property details approval form

16 Fortress Close, Weldon, Corby, Northamptonshire, NN17 3LY

Date: 19 February 2026

Property Ref and Version: COR113053 - 0002

## >> floor plan



Ground Floor

First Floor

Total floor area 65.6 m<sup>2</sup> (706 sq.ft.) approx

This floor plan is for illustrative purposes only. It is not drawn to scale. Any measurements, floor areas (including any total floor area), openings and orientation are approximate. No details are guaranteed, they cannot be relied upon for any purpose and they do not form part of any agreement. No liability is taken for any error, omission or misstatement. A party must rely upon its own inspection(s). Powered by [www.propertybox.io](http://www.propertybox.io)



## >> approval

	Signature	Date
Iona Roberts	<i>I Roberts</i>	19/02/2026
Miss D.V. Dunkley	<i>Dunkley</i>	19/2/26