



# Horton Road, Three Legged Cross, Wimborne, Dorset, BH21 6FH

£220,000

🛏️ 2 🚿 2 🚗 1



- Gated, Residential Park
- Two Double Bedrooms
- Ensuite and Guest Bathroom
- Utility Room
- CASH BUYERS ONLY
- Luxury Detached Park Home Bungalow
- Kitchen With Integrated Appliances
- Spacious Dual Aspect Lounge
- Gardens To All Sides
- Part-Exchange Available

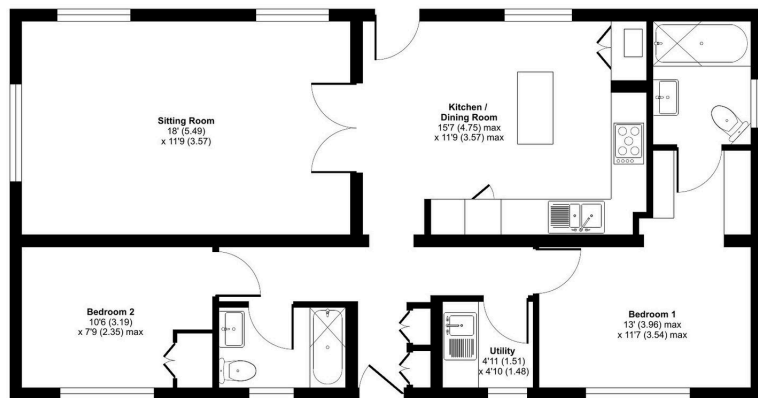


An exceptionally presented two bedroom detached park home bungalow(40'x20') which is located on the outskirts of this popular gated residential park in Dorset. This luxurious home boasts a spacious, dual aspect lounge, a stunning kitchen/ dining room with integrated appliances including an American style fridge/freezer and wine fridge. There is a utility room, two double bedrooms, the master having a walk through wardrobe area and an ensuite, as well as a guest bathroom, gardens and a driveway to the side. This is an exceptional home and must be viewed.



**Juniper Way, Deers Court, Three Legged Cross, Wimborne, BH21**

Approximate Area = 802 sq ft / 74.5 sq m  
For identification only - Not to scale



GROUND FLOOR

Floor plan produced in accordance with RICS Property Measurement 2nd Edition, incorporating International Property Measurement Standards (IPMS2 Residential). © richvecom 2025. Produced for The Park Home Agency Ltd. REF: 1242710



01793 230185  
sales@theparkhomeagency.co.uk

Agents Notes: All measurements are approximate and quoted in metric with imperial equivalents and for general guidance only and whilst every attempt has been made to ensure accuracy, they must not be relied on. The fixtures, fittings and appliances referred to have not been tested and therefore no guarantee can be given that they are in working order. Internal photographs are reproduced for general information and it must not be inferred that any item shown is included with the property. For a free valuation, contact the numbers listed on the brochure