



habitio.co.uk
At the heart of student accommodation

127 Clarendon Park Road,
Leicester, LE2 3AJ
0116 270 6699
sales@archliving.co.uk



28 Newtown Street, Leicester Leicestershire LE1 6WL

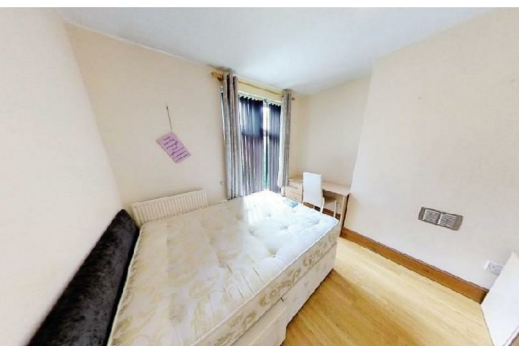
£425 Per week

Arch Living is delighted to present this stunning and modern three-storey student house located on Newtown Street in Leicester. This impressive period property boasts five spacious double bedrooms, making it an ideal choice for students seeking comfort and convenience.

Situated just off the prestigious Regent Road area, this home is within walking distance of the city centre, providing easy access to local amenities, shops, and transport links. The property features a large living room, perfect for socialising and relaxing after a long day of studies.

The modern kitchen is equipped with a washing machine, ensuring that daily chores are made simple and efficient. With two well-appointed bathrooms, this house offers ample facilities for all residents, enhancing the overall living experience.

We highly recommend viewing this exceptional property to fully appreciate its charm and suitability for student life. Don't miss the opportunity to secure a fantastic home in a prime location.



A

- Close to UoL & DMU
- Quirky, character-filled property

5

