



HIGH STREET

Lambourn, Hungerford, RG17 8XL


PRIMARY
HOMES & LETTINGS

**High Street,
Lambourn, Hungerford RG17
8XL**

- AVAILABLE NOW
- First Floor Maisonette
- Two Bedrooms
- Well Presented
- Fully Furnished
- 16ft Lounge/Diner
- Kitchen
- Bathroom
- Ample Parking
- High St Location

£900 Per Month



*** AVAILABLE NOW *** We are delighted to offer this well presented and spacious two bedroom maisonette offered fully furnished. Located in the heart of Lambourn within walking distance to all local amenities including a primary school, choice of village shops, doctors surgery, butcher, bakery and various pubs. The accommodation comprises of entrance porch, lounge/diner, kitchen, two bedrooms and bathroom. Property also benefits from gas central heating and ample parking to the rear of the high street. An early viewing is highly recommended.

Sizes

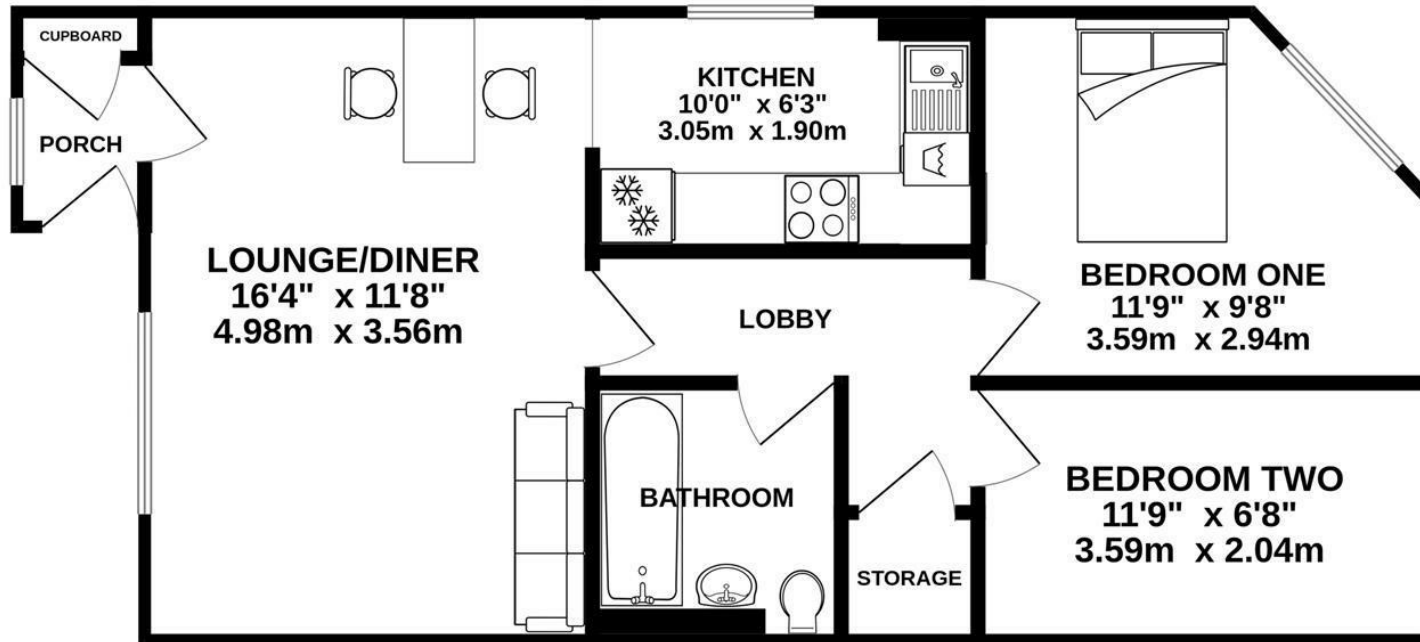
Please note, all measurements of room sizes given are not guaranteed and figures are for guidance only.

Viewings

Strictly via our Swindon office telephone (01793) 641641.



FIRST FLOOR
548 sq.ft. (50.9 sq.m.) approx.



TOTAL FLOOR AREA : 548 sq.ft. (50.9 sq.m.) approx.

Whilst every attempt has been made to ensure the accuracy of the floorplan contained here, measurements of doors, windows, rooms and any other items are approximate and no responsibility is taken for any error, omission or mis-statement. This plan is for illustrative purposes only and should be used as such by any prospective purchaser. The services, systems and appliances shown have not been tested and no guarantee as to their operability or efficiency can be given.
Made with Metropix ©2026

01793 641641

101 Commercial Road, Swindon, SN1 5PL

info@primaryhomesandlettings.co.uk

PRIMARY
HOMES & LETTINGS