



Plot 44 | Bramley Fields | Southwell | NG250DX

£345,000

FENTON JONES



## Key features

- 2 bedroom
- 1 bathroom
- Sitting room with french doors to rear garden
- Perfect for first-time buyers
- Solar PV panels
- Minster school catchment

## Description

\*£345K with £17,250 dep contribution & £7,350 worth of upgrades - available to view and ready to move into\*

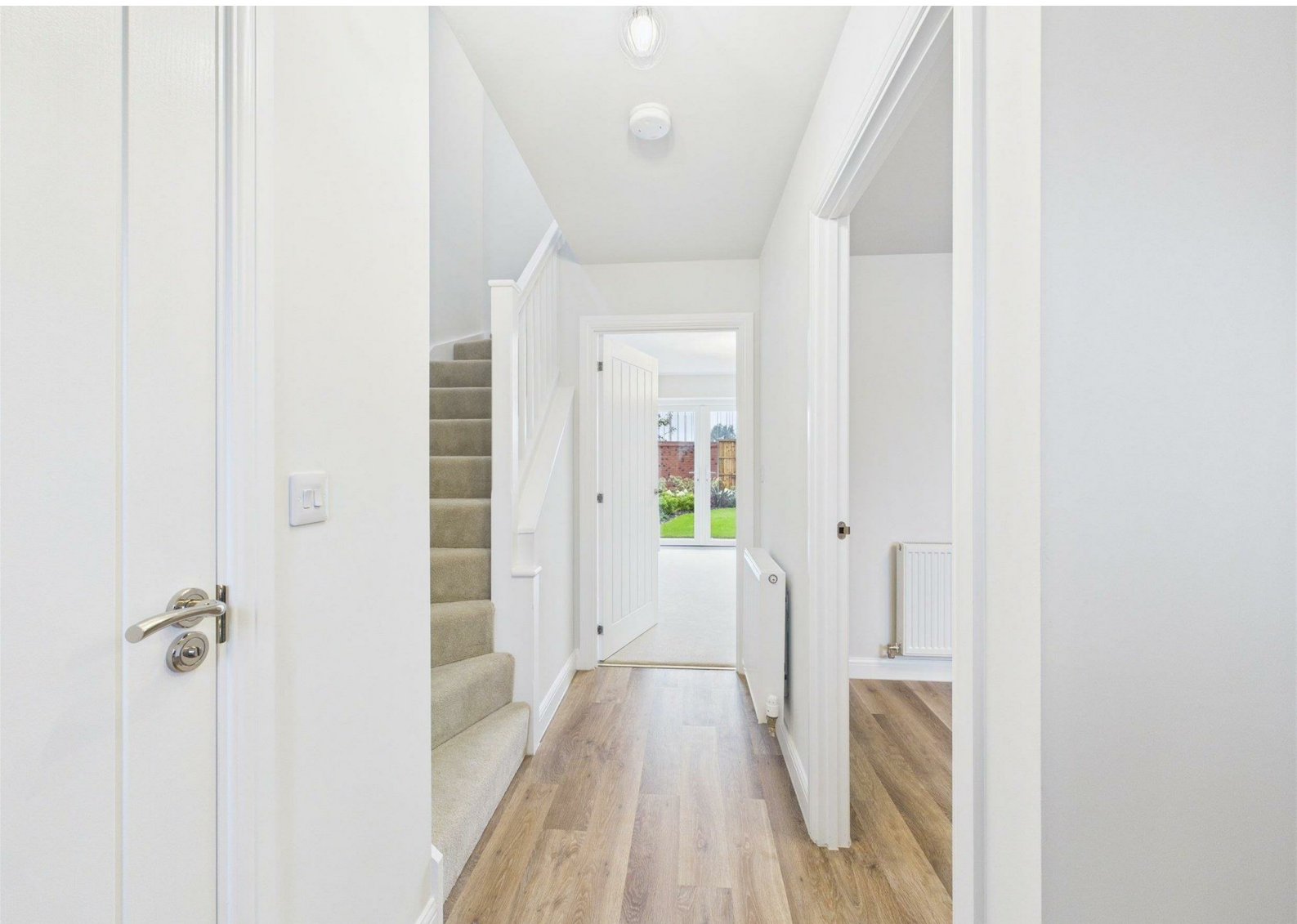
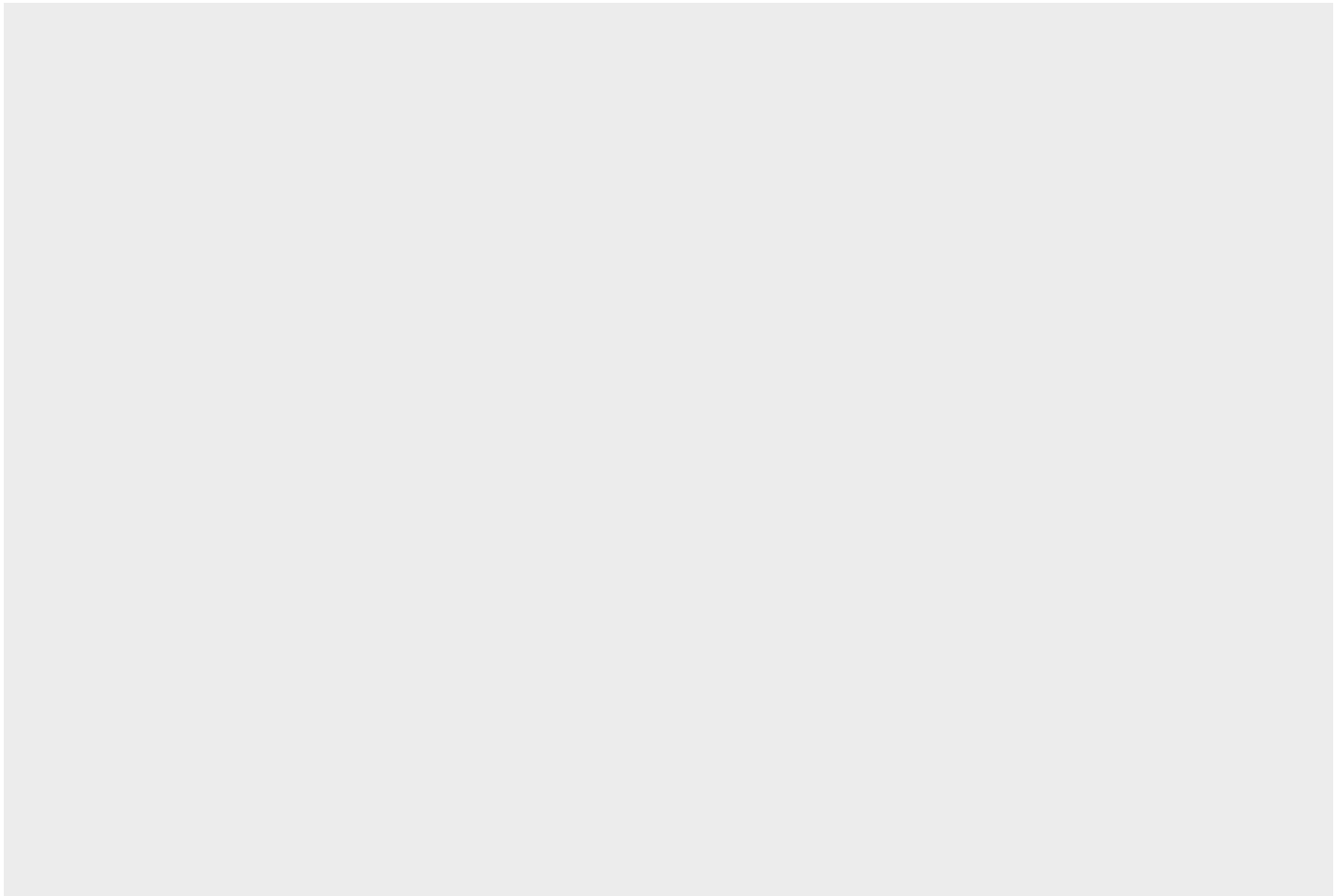
In partnership with Cameron Homes, we are excited to offer a stunning collection of brand new 2-5 bedroom homes at Bramley Fields, Southwell.

Located on the edge of picturesque Southwell, and set within private, landscaped grounds, Bramley Fields is an exclusive new neighbourhood of 45 2-5 bedroom homes.

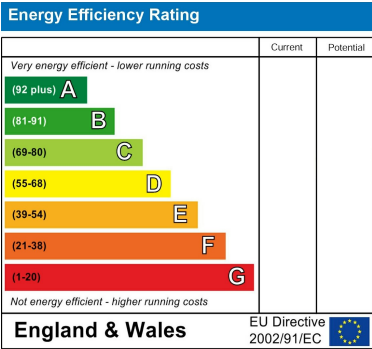
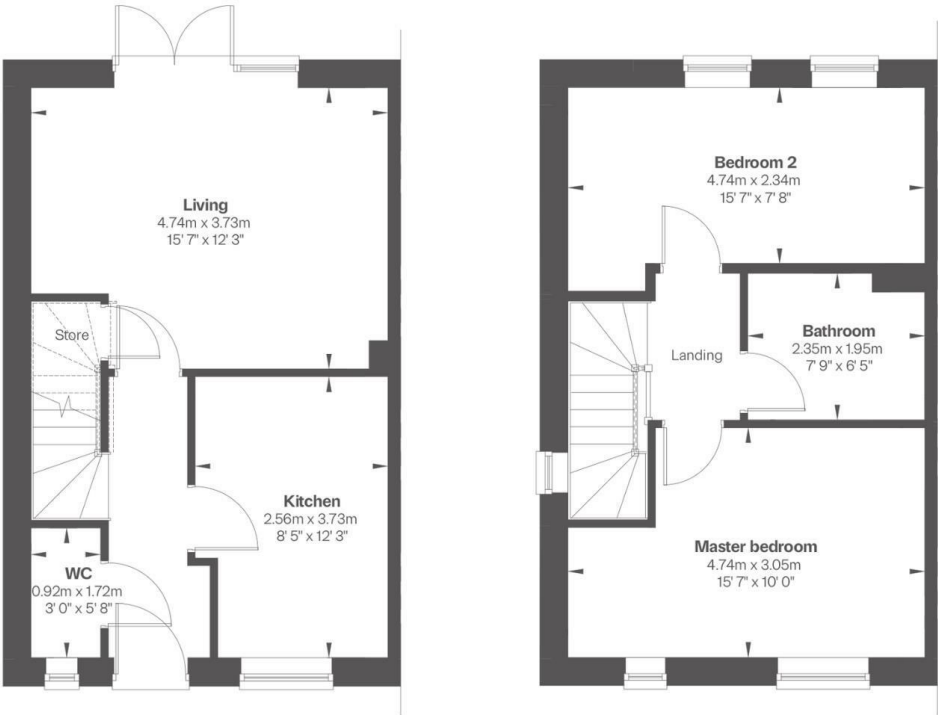
The Annesley House: A stylish 2 bedroom house with spaces that are just as perfect for enjoying quiet evenings in as they are for entertaining friends.

Bramley Fields is within walking distance of Southwell, a thriving market town with a Minster and a great collection of independent shops, cafes and restaurants. There are a number of highly regarded infant and junior schools as well as the much sought after Minster secondary school. There is access to many different sports and recreational facilities nearby. Southwell is surrounded by open countryside with plenty of beautiful walks right on your doorstep. Conveniently located for commuters with Newark Northgate Station just 15 minutes away with high-speed access to London Kings Cross in just 1 hour and 15 minutes. Nottingham is 30 minutes by car.





Floor plans



FENTON JONES

7 Church Street  
Southwell  
Nottinghamshire  
NG25 0HQ  
01636 390000  
sales@fentonjones.com  
<https://www.fentonjones.com>