



5 Westgate Court,
Croft Road, Thame, Oxfordshire
OX9 3JE

£1800pcm

RB REASTON BROWN

This Duplex Apartment Offers A Bright and Spacious Living Environment And Easy Access To The Town Centre. It Is An Excellent Opportunity For Those Seeking A Comfortable And Stylish Home In A Highly Desirable Location.

This three-bedroom duplex apartment set within relaxing communal gardens located on a prestigious, non-estate residential road. The property is exceptionally light and bright, giving an airy feeling throughout. A double-height living room features French doors that open out, along with a defined dining area.

The kitchen is well-equipped with appliances, including a fridge, washing machine, and Hotpoint oven with an induction hob. The first floor also features a bedroom with a large window and built-in wardrobe, alongside a bathroom with a cube shower and power shower.

An exposed stairwell leads to the upper level, where the master bedroom offers ample space and storage with a built-in wardrobe. Another bedroom continues the theme of light and neutral decor and includes two double wardrobes with overhead cupboards. This floor is completed with a family bathroom, equipped with a toilet, bath & sink.

The approach to the property is under an arch, with parking available at the rear. The property features gas central heating, is un-furnished and available immediately.

EPC rating of C Council Tax Band C.

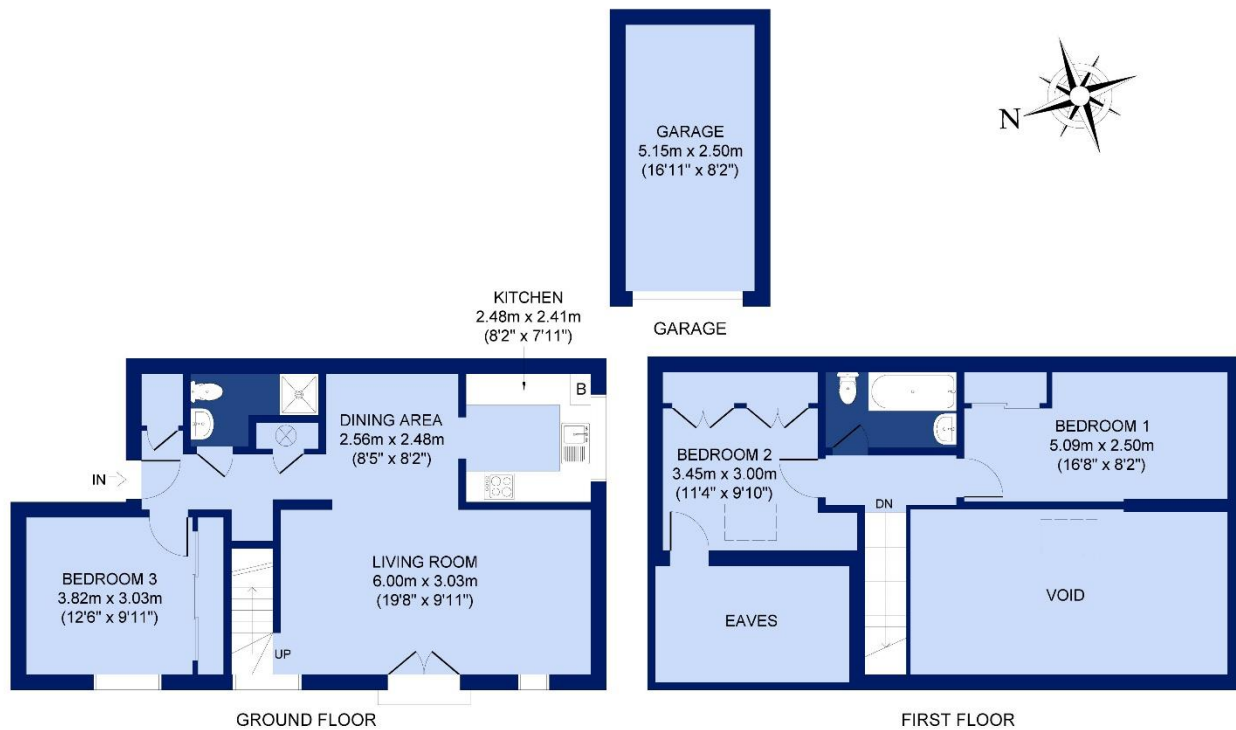
Situation

Thame is vibrant market town situated on the Oxon/Bucks borders, much enjoyed by its inhabitants. There are many independent shops, delicatessens, and a Waitrose. Thame is steeped in history, with beautiful buildings and medieval churches. On the social side it has award winning bars and restaurants, you could have breakfast at Black Goo or a pleasant lunch at the Eight Bells and dinner at the Thatch. Thame also has a health centre and a cottage hospital, sports facilities, and excellent schooling, including a Catholic school, Church of England school and the sought after Lord Williams secondary school. There is also access to the grammar schools in Buckinghamshire. London Marylebone can be reached in 34 minutes via Haddenham & Thame Parkway Station and M40 junction 7 for access to London, Birmingham and the Northern Networks is nearby. Thame also has a good bus service to Oxford, Aylesbury, and the neighbouring villages, which have walks, country pubs and beautiful scenery through the Chiltern Hills.

The property comprises the following with all dimensions being approximate only. Please note that Reaston Brown has not tested appliances or systems and no warranty as to condition or suitability is confirmed or implied.







APPROX. GROSS INTERNAL FLOOR AREA 1118 SQ FT / 104 SQ M
5 WESTGATE COURT, CROFT ROAD, THAME, OX9 3JE

All measurements of walls, doors, windows and fitting and appliances, including their size and location, are shown as standard sizes and therefore cannot be regarded as a representation by the seller.



Viewing is Strictly by Appointment through Reaston Brown

www.reastonbrown.co.uk Email: sales@reastonbrown.co.uk

94 High Street . Thame . Oxfordshire . OX9 3EH Tel: +44(0) 1844 260626

2-4 Windmill Road, Headington, Oxford, OX3 7BU Tel : +44(0) 1865 308855

119-121 Park Lane . London . W1K 7AG. Tel : +44(0) 207 079 1589

Sales, Lettings, Commercial & Chartered Surveying

