



Willow Park, KING'S LYNN, PE30 3BP

welcome to

Willow Park, KING'S LYNN

Located close to Wootton Road is this well proportioned two bedroom detached bungalow which is being offered with no onward chain. Viewing highly recommended.



Double Glazed Entrance Door

Entrance Porch

Door to:-

Entrance Hall

Radiator, loft access with light, storage cupboard

Lounge

15' 3" x 14' 2" into bay (4.65m x 4.32m into bay)
Double glazed bay window, radiator, electric fire

Kitchen/ Breakfast Room

11' 2" x 10' 8" (3.40m x 3.25m)
Range of base and wall walls, roll edge work top, inset stainless steel sink with mixer tap over, built-in oven, electric hob, extractor over, space for dishwasher washing machine and fridge freezer, double glazed window, double glazed door to:-

Rear Passageway

Double glazed door to rear, integral door to garage

Cloakroom

Low level WC, double glazed window, ceramic tiled floor

Bedroom One

11' x 10' 10" excl wardrobe (3.35m x 3.30m excl wardrobe)
Fitted wardrobe double glazed window, radiator

Bedroom Two

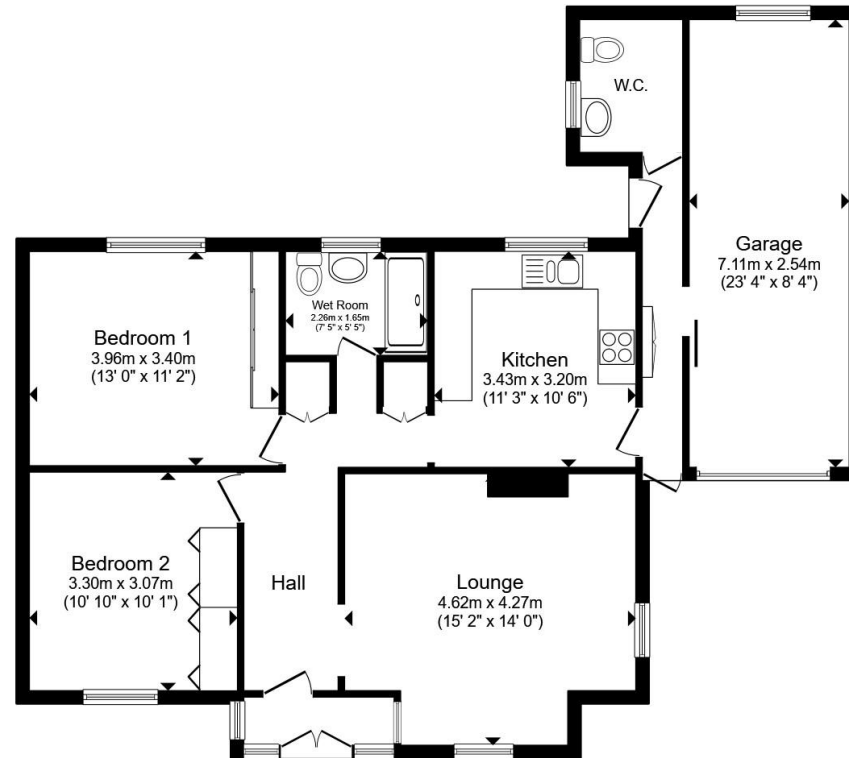
11' 2" x 11' to fitted wardrobe (3.40m x 3.35m to fitted wardrobe)
Double glazed window, radiator, fitted wardrobe

Wet Room

Low level WC, mains shower, tiled walls, radiator

Outside

Front garden, driveway leading to a single garage with up and over door, power and light. The rear garden is well maintained with patio and lawned area with a variety of shrubs and plants, garden shed and greenhouse which may need some work.



Total floor area 97.4 m² (1,048 sq.ft.) approx

This floor plan is for illustrative purposes only. It is not drawn to scale. Any measurements, floor areas (including any total floor area), openings and orientation are approximate. No details are guaranteed, they cannot be relied upon for any purpose and they do not form part of any agreement. No liability is taken for any error, omission or misstatement. A party must rely upon its own inspection(s). Powered by www.propertybox.io



view this property online williamhbrown.co.uk/Property/KLN119659



welcome to

Willow Park, KING'S LYNN

- Popular Willow Park Location
- Detached Bungalow
- Two Bedrooms
- Kitchen/Breakfast Room
- Wet Room

Tenure: Freehold EPC Rating: D

Council Tax Band: B

£230,000



Please note the marker reflects the postcode not the actual property

view this property online williamhbrown.co.uk/Property/KLN119659



Property Ref:
KLN119659 - 0004

1. MONEY LAUNDERING REGULATIONS Intending purchasers will be asked to produce identification documentation at a later stage and we would ask for your co-operation in order that there is no delay in agreeing the sale. 2. These particulars do not constitute part or all of an offer or contract. 3. The measurements indicated are supplied for guidance only and as such must be considered incorrect. Potential buyers are advised to recheck measurements before committing to any expense. 4. We have not tested any apparatus, equipment, fixtures or services and it is in the buyers interest to check the working condition of any appliances. 5. Where an EPC, or a Home Report (Scotland only) is held for this property, it is available for inspection at the branch by appointment. If you require a printed version of a Home Report, you will need to pay a reasonable production charge reflecting printing and other costs. 6. We are not able to offer an opinion either written or verbal on the content of these reports and this must be obtained from your legal representative. 7. Whilst we take care in preparing these reports, a buyer should ensure that his/her legal representative confirms as soon as possible all matters relating to title including the extent and boundaries of the property and other important matters before exchange of contracts.

William H Brown is a trading name of Sequence (UK) Limited which is registered in England and Wales under company number 4268443, Registered Office is Cumbria House, 16-20 Hockliffe Street, Leighton Buzzard, Bedfordshire, LU7 1GN. VAT Registration Number is 500 2481 05.



william h brown



01553 771337



KingsLynn@williamhbrown.co.uk



40-42 King Street, KING'S LYNN, Norfolk, PE30 1ES



williamhbrown.co.uk