



jordan fishwick

Apt 573 Spectrum, Block 12, M3 7EF
£950 Per Calendar Month



Spectrum Blackfriars Road M3 7EF

£950 Per Calendar Month



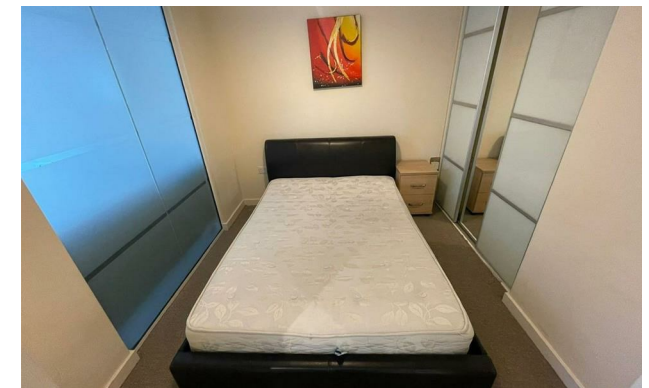
The Property

PLEASE NOTE - THERE WILL BE BUILDING WORKS OCCURRING ON THE BUILDING IN JULY 2028. ANY CHANGES WE WILL UPDATE

Available Late July. This one bedroom apartment is located in the Spectrum Development which is a short distance from Deansgate. Fully fitted kitchen with fridge and freezer, dishwasher and oven, the living room has sliding patio door opening to a Juliet balcony. The double bedroom has built in wardrobes and there is a luxurious shower suite with tiled and mirrored walls. Furnished. No Parking. Tax Band B. EPC Rating C. No Pets Allowed, ONLY Service dogs allowed.


Reposit (Nil Deposit Option) available for this property.

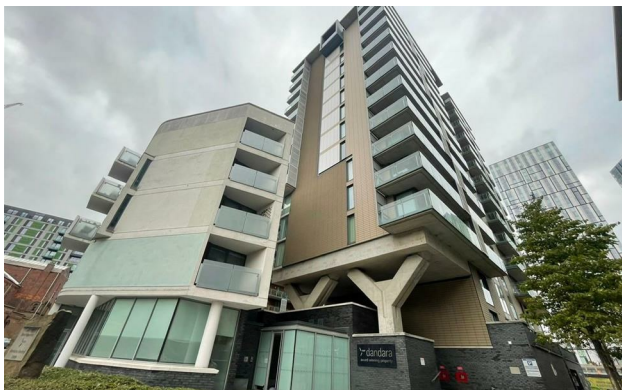
VIDEO/ PHOTO OFFERS NOT ACCEPTED - PLEASE CALL TO BOOK AN IN PERSON VIEWING



- Available Late July
- One Bed Apartment
- Juliet Balcony
- Tax Band B
- EPC Rating C
- Close to the City Centre
- No Parking
- No Pets
- Reposit Available



Energy Efficiency Rating		
	Current	Potential
Very energy efficient - lower running costs		
(92 plus) A		
(81-91) B		
(69-80) C	80	80
(55-68) D		
(39-54) E		
(21-38) F		
(1-20) G		
Not energy efficient - higher running costs		
England & Wales	EU Directive 2002/91/EC 	





These particulars are believed to be accurate but they are not guaranteed and do not form a contract. Neither Jordan Fishwick nor the vendor or lessor accept any responsibility in respect of these particulars, which are not intended to be statements or representations of fact and any intending purchaser or lessee must satisfy himself by inspection or otherwise as to the correctness of each of the statements contained in these particulars. Any floorplans on this brochure are for illustrative purposes only and are not necessarily to scale.

Offices at: Offices at Chorlton, Didsbury, Disley, Hale, Glossop, Macclesfield, Manchester Deansgate, Manchester Whitworth Street, New Mills, Sale, Wilmslow and Withington