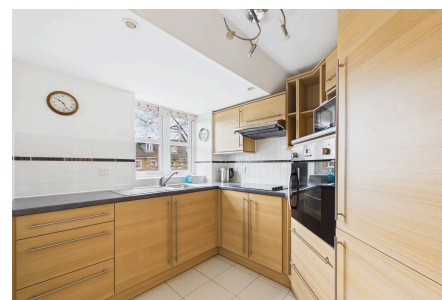
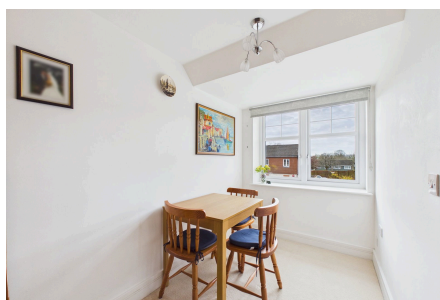


Clarence Court, Horsham

£300,000

 2  2  1



A large Two Double Bedroom First Floor Apartment for the Over 60's in Central Horsham, boasting a bright 24ft Living Area, and Fantastic Communal Facilities.

Tenure: Leasehold

Lease Length: 125 years from 2014

Council Tax Band: D

EPC: Current 78 - Potential 83

Key Features

- Watch Our Video Tour
- En Suite & Walk In Wardrobe
- Modern Wet Room
- No Onward Chain
- Convenient Central Location
- Two Large Double Bedrooms
- Bright 24ft Living/Dining Room
- Stylish Kitchen With Integrated Appliances
- First Floor Retirement Apartment For Over 60's
- Fantastic Communal Facilities



Floor Plan

Floor area 76.1 sq.m. (819 sq.ft.)

Total floor area: 76.1 sq.m. (819 sq.ft.)

This floor plan is for illustrative purposes only. It is not drawn to scale. Any measurements, floor areas (including any total floor area), openings and orientations are approximate. No details are guaranteed, they cannot be relied upon for any purpose and do not form any part of any agreement. No liability is taken for any error, omission or misstatement. A party must rely upon its own inspection(s). Powered by www.Propertybox.io