



## Thomas More Street, E1W

£3,000 Per month

 3  1  1  D

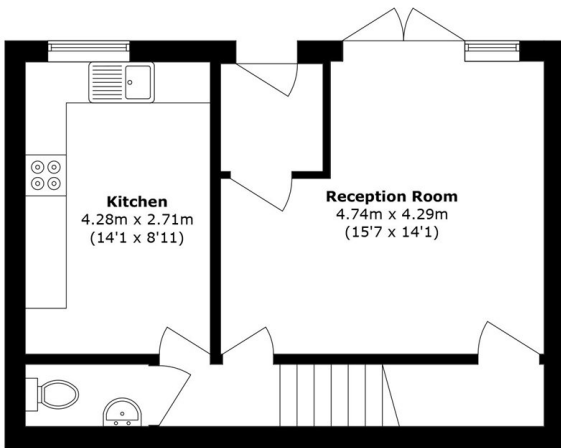
- Three Bedroom
- Private Patio
- Separate Kitchen
- Additional W/C
- West Wapping
- Heating & Hot Water Included



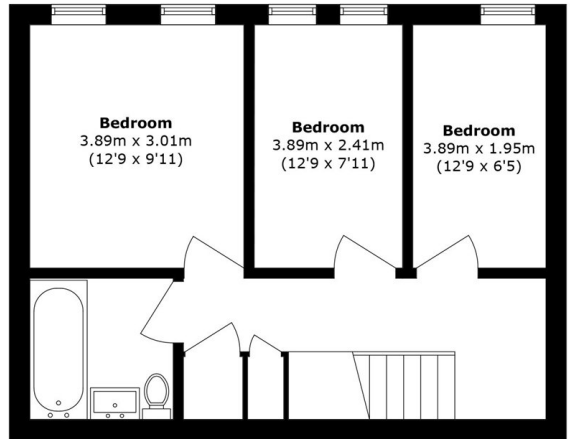
A well-presented three double bedroom maisonette in West Wapping with a private patio. This split level property offers wood flooring throughout, a separate kitchen and private garden. Heating and hot water is included.

Ideally located next to St Katharine's Docks with a wide selection of pubs, bars, restaurants and cafes nearby. Only a short walk from Tower Hill stations, DLR links, Wapping Overground Station for an easy access to the City, London Bridge and Canary Wharf.





**Ground Floor**



**First Floor**

Total area (approx.): 84.2 sq. m (906.3 sq. ft)

35A Wapping High Street,  
London, E1W 1NR  
020 7702 3456  
ea2group.com