

# Howard Morley & Sons

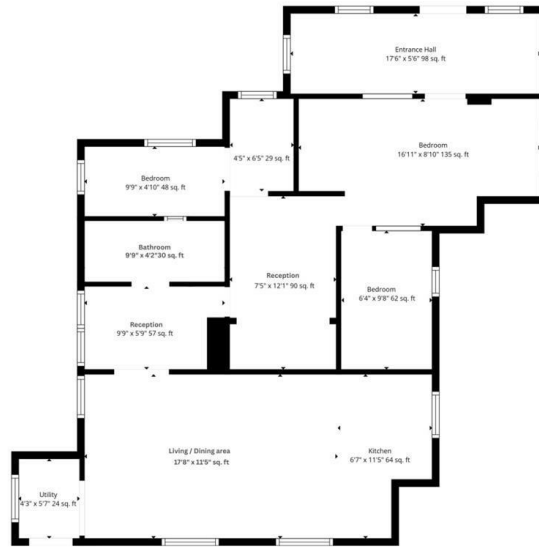


PER MONTH

**£1,750 Per Month**

**Green Lane**

Guildford, GU5 9EP



TOTAL 1119 sq. ft



Energy Efficiency Rating		Current	Potential
Very energy efficient - lower running costs			
(92 plus) A			93
(81-91) B			
(69-80) C			
(55-68) D		56	
(39-54) E			
(21-38) F			
(1-20) G			
Not energy efficient - higher running costs			
England & Wales		EU Directive 2002/91/EC	

Agents Note: Whilst every care has been taken to prepare these particulars, they are for guidance purposes only. All measurements are approximate and are for general guidance purposes only and whilst every care has been taken to ensure their accuracy, they should not be relied upon and potential buyers/tenants are advised to recheck the measurements

Howard Morley & Sons

OFFICE ADDRESS  
 276 High Street  
 Guildford  
 Surrey  
 GU1 3JL

OFFICE DETAILS  
 01483 575 304  
 lettings@hmorley.co.uk  
 hmorley.co.uk