



DUKES MEWS, W1U

£3,850,000

Three double bedrooms
Modern open plan living
Spacious reception
Private gated development
Secure underground parking
Freehold

@marshandparsons
marshandparsons.co.uk

MARSH &
PARSONS



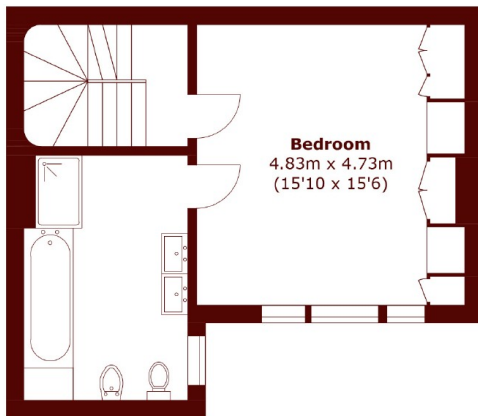
ABOUT THE PROPERTY

This charming house is set within a secure gated mews with CCTV and presented in excellent condition throughout. The property comprises an open plan kitchen and dining room leading to a secluded patio garden and a spacious reception room ideal for entertaining. On the two upper floors is a stunning master bedroom with en-suite and masses of storage, two further bedrooms and a contemporary family bathroom. The property also benefits from secure underground parking for two cars.

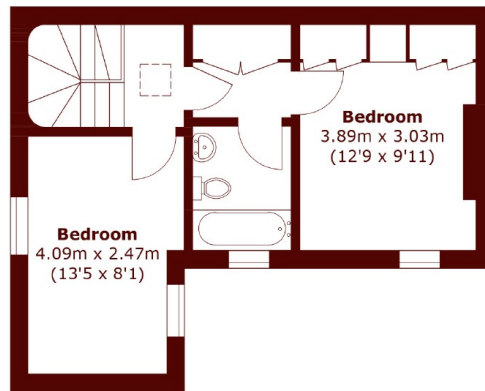
Dukes Mews is located just off Manchester Square and around the corner from Marylebone High Street and Chiltern Street, both of which offer a wonderful selection of boutique stores, cafes, supermarkets, and restaurants.



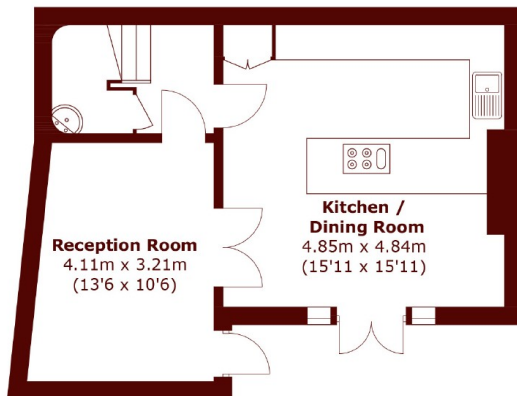
STEP INSIDE DUKES MEWS



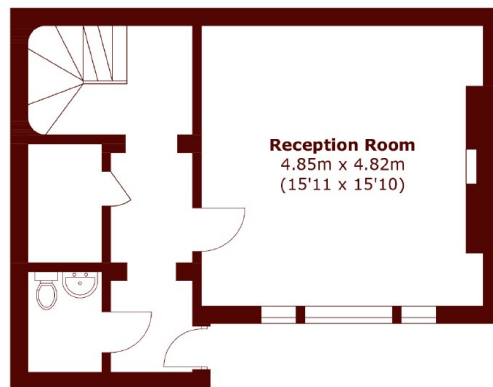
First Floor



Second Floor



Lower Ground Floor



Ground Floor

Total area (approx.): 159.7 sq. m (1,718.8 sq. ft)

Marylebone & Mayfair
020 7935 1775

Energy Rating: C We aim to make our particulars both accurate and reliable. However, they are not guaranteed; nor do they form part of an offer or contract. If you require clarification on any points then please contact us, especially if you're traveling some distance to view. Please note that appliances and heating systems have not been tested and therefore no warranties can be given as to their good working order

MARSH &
PARSONS