

ERITH

RSW

RIVERSIDE WEST

# RIVER SIDE WEST

Introducing a new development of stylish one and two-bedroom apartments in Erith, Bexley, just steps from the river. These contemporary homes feature spacious open-plan layouts, floor-to-ceiling windows, and private outdoor spaces.

Each apartment is designed for modern living, with ample natural light and sleek finishes throughout. Residents can enjoy sweeping views from the communal roof terraces. These apartments offer a unique blend of urban convenience and scenic surroundings, creating a vibrant lifestyle in the heart of Erith.



# DUAL *purpose*



Each apartment offers dedicated areas for working remotely, with abundant natural light and spaciousness to support productivity, aided by private outdoor spaces that create an open-air escape feeling.

These new apartments provide adaptable living spaces tailored for both work and relaxation within the comfort of home.

# LIVING *space*





# RIVERSIDE

*living in*

# LONDON

Erith is fast becoming a sought-after destination, combining modern living with easy access to central London. Its scenic surroundings and transport links create an ideal balance between urban connectivity and natural escape.

Located along the Thames, Erith offers riverside living with newly renovated spaces like Riverside Gardens and the historic Erith Pier, perfect for outdoor leisure. The area's extensive walking and cycling routes connect directly to iconic spots such as Greenwich, Bluewater, and the Thames Barrier, allowing you to explore London's vibrant neighbourhoods with ease.

Proximity to central London enhances Erith's appeal for commuters, offering a peaceful retreat within reach of the city. With its unique blend of urban and riverside charm, Erith stands out as an exciting place to live, work, and explore.



*All you  
need is just a  
STONE'S  
THROW  
away*

## *beyond* RSW

Erith offers a vibrant mix of amenities, including diverse shopping, cosy cafes, excellent restaurants, lively pubs, a local theatre, and beautiful parks, making it a welcoming place to call home.

### *shop & markets*

The Exchange in Erith, set in a restored Victorian library, hosts community events, art workshops, and exhibitions.

Erith boasts high street shops, Riverside Shopping Centre, and convenient supermarkets.



### *cafés & eateries*

Popular spots include The Bookstore Café, known for its artisan coffee, and Mambocino's for hearty brunches, alongside The Running Horses, a cosy pub offering classic British meals and friendly atmosphere.



### *relax & unwind*

Enjoy the serene Riverside Gardens, Frank's Park with its woodland trails, and Crayford Marshes, a haven for birdwatchers and nature enthusiasts, offering tranquil green spaces and scenic river views.



### *health & fitness*

Erith Leisure Centre features a swimming pool, gym, sports courts, and fitness classes, catering to all ages and fitness levels, making it a go-to spot for health and wellness activities.



# ERITH

*a unique riverside*

# HAVEN



THAMES TOWPATH



ERITH FISH SCULPTURE



ERITH PIER

Erith Pier, London's longest, reflects the area's rich maritime history, once a bustling port. The regenerated Riverside Gardens revitalise this heritage, adding landscaped spaces and recreational areas, transforming the waterfront into a lively, scenic destination for all.


# EBB & FLOW

Erith offers excellent transport links, making travel into central London and across Kent convenient by train, car, bicycle, or bus – ideal for both commuters and weekend explorers.

Living at Riverside West captures the rhythm of life in Erith, where seamless travel connections bring the best of city and countryside within easy reach. By train, Erith Station's direct services get you to London Bridge in 35 minutes, perfect for daily commuters. Riverside West is just 2 stops on the train from Abbey Wood with Elizabeth Line connections, reaching Liverpool Street, Bond Street, Heathrow Airport and Reading. For shopping both Bluewater and Lakeside Shopping Centres are under half an hour away by car or why not head up to Stratford for a great day out. For road trips or exploring Kent, the A206 connects quickly to the M25. Local bus routes link Erith to nearby Bexley and surrounding areas, while cyclists can follow the Thames Path for scenic rides to Greenwich with its historic park and beyond. These versatile transport options give you the freedom to experience both the vibrant pulse of London and the peaceful landscapes of Kent, embodying Erith's unique flow between urban energy and riverside calm.

## CONNECTED LIVING






### WALKING from RSW

-  ERITH TRAIN STATION  
0.4 miles
-  RIVERSIDE GARDENS  
0.3 miles
-  THE EXCHANGE  
0.3 miles
-  ERITH PIER  
0.5 miles
-  MORRISON'S  
0.6 mile

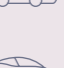

### TRAIN from Erith Station

-  ABBEY WOOD  
6 mins
-  DARTFORD  
8 mins
-  WOOLWICH ARSENAL  
11 mins
-  LONDON BRIDGE  
34 mins
-  GREENWICH  
25 mins
-  WHITSTABLE  
1hr 55 mins

### CYCLING from RSW

-  RIVERSIDE SHOPPING CENTRE  
0.8 miles
-  FRANK'S PARK  
1.1 miles
-  ERITH LEISURE CENTRE  
1.1 miles
-  ABBEY WOOD  
2.2 miles
-  BEXLEY  
4.3 miles

### DRIVING from RSW

-  BEXLEYHEATH  
4 miles
-  DARTFORD  
4.1 miles
-  WOOLWICH  
5.1 miles
-  LONDON CITY AIRPORT  
8.0 miles
-  BLUEWATER  
8.1 miles
-  LAKESIDE SHOPPING CENTRE  
9.3 miles

Distances calculated using googlemaps. Train times according to National Rail enquiries

# 1 REASONS to move to RIVERSIDE WEST

Erith is becoming a prime choice for homebuyers seeking the perfect blend of riverside tranquility and modern convenience. From scenic waterfronts and expansive parks to exciting regeneration projects, Erith offers a peaceful, affordable haven within easy reach of London. With a strong community spirit and growing amenities, Riverside West is an ideal place to call home.

4

## *Vibrant regeneration*

Major regeneration projects are transforming Erith, with improved parks, new shops, and rejuvenated public spaces creating a fresh, modern feel.

5

## *A haven from the City*

Escape the noise and hustle, with green spaces, fresh air, and a community-focused atmosphere that feels miles from the urban rush.

6

## *Proximity to London*

With direct trains to London Bridge, Cannon Street, and Charing Cross, you're well-connected for work or leisure in the city.

7

## *Community spirit*

Erith fosters a strong sense of community, with regular events, local markets, and community hubs like The Exchange.

8

## *Green spaces and parks*

Local parks, including Riverside Gardens and Frank's Park, offer beautiful, peaceful outdoor areas to relax, exercise, and connect with nature.

1

## *Riverside living*

Enjoy stunning views and the tranquility of being right by the water, with easy access to Erith Pier and riverside walking trails.

2

## *A step up to home ownership*

Riverside West offers an excellent opportunity to get onto the property ladder with more affordable prices in this up and coming part of London.

3

## *Stunning outdoor space*

Exclusive communal south facing roof terraces at Riverside West provide residents with serene outdoor spaces with river views, ideal for relaxation and socialising.

9

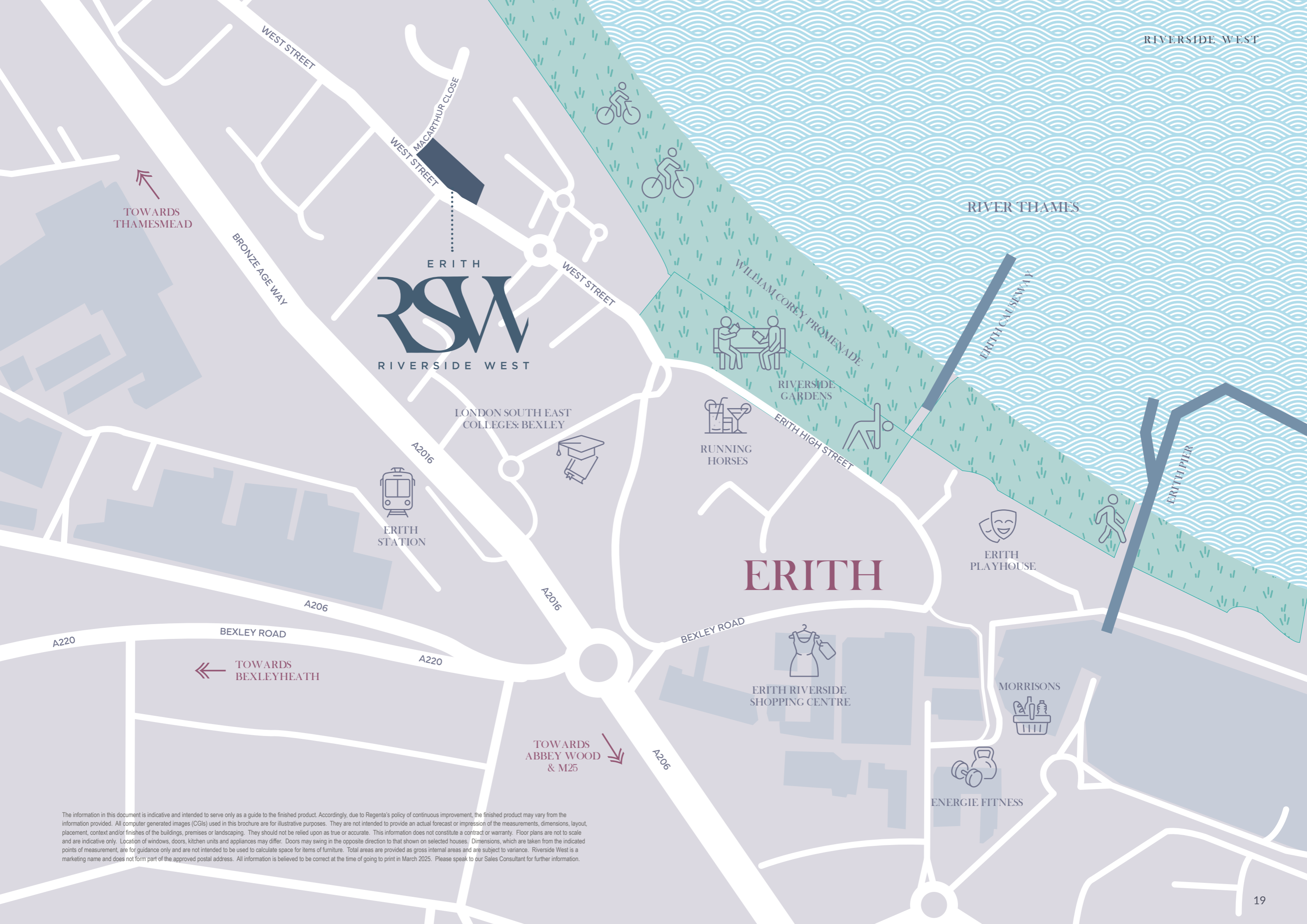
## *Active lifestyle*

With the Thames Path and local cycling routes, Erith supports a vibrant, active lifestyle for walkers, runners, and cyclists alike.

10

## *Expanding amenities*

A variety of shops, cafés, restaurants, and leisure facilities are nearby, providing everything you need within easy reach.



TOWARDS THAMESMEAD

ERITH  
**RSW**  
RIVERSIDE WEST

LONDON SOUTH EAST COLLEGES: BEXLEY

ERITH STATION

RUNNING HORSES

ERITH

ERITH PLAYHOUSE

ERITH RIVERSIDE SHOPPING CENTRE

MORRISONS

ENERGIE FITNESS

TOWARDS ABBEY WOOD & M25

The information in this document is indicative and intended to serve only as a guide to the finished product. Accordingly, due to Regenta's policy of continuous improvement, the finished product may vary from the information provided. All computer generated images (CGIs) used in this brochure are for illustrative purposes. They are not intended to provide an actual forecast or impression of the measurements, dimensions, layout, placement, context and/or finishes of the buildings, premises or landscaping. They should not be relied upon as true or accurate. This information does not constitute a contract or warranty. Floor plans are not to scale and are indicative only. Location of windows, doors, kitchen units and appliances may differ. Doors may swing in the opposite direction to that shown on selected houses. Dimensions, which are taken from the indicated points of measurement, are for guidance only and are not intended to be used to calculate space for items of furniture. Total areas are provided as gross internal areas and are subject to variance. Riverside West is a marketing name and does not form part of the approved postal address. All information is believed to be correct at the time of going to print in March 2025. Please speak to our Sales Consultant for further information.



# RELAXING *space*

These Riverside West apartments feature bright, naturally lit interiors with open-plan living areas, complemented by fully-fitted kitchens and contemporary bathrooms designed for modern comfort and style.

## *Kitchen*

- Kitchen cupboards in Pebble grey
- Laminate worktop
- 1 ½ bowl stainless steel sink
- One multi-gang switch for all appliances
- Glass splashback
- Under wall unit lighting
- Extractor hood
- Integrated Zanussi oven, electric hob & fridge/freezer

## *Bathroom*

- Armitage Shanks/Ideal Standard sanitaryware
- 1700mm x 700mm bath
- Glass bath screen
- Vado shower and taps
- Porcelanosa Madagascar natural floor tiles
- Porcelanosa Madagascar natural wall tiling
- Heated towel rail
- Bathroom mirror
- Apartments with en-suites feature a full shower enclosure
- Grohe flush plate
- Chrome toilet roll holder

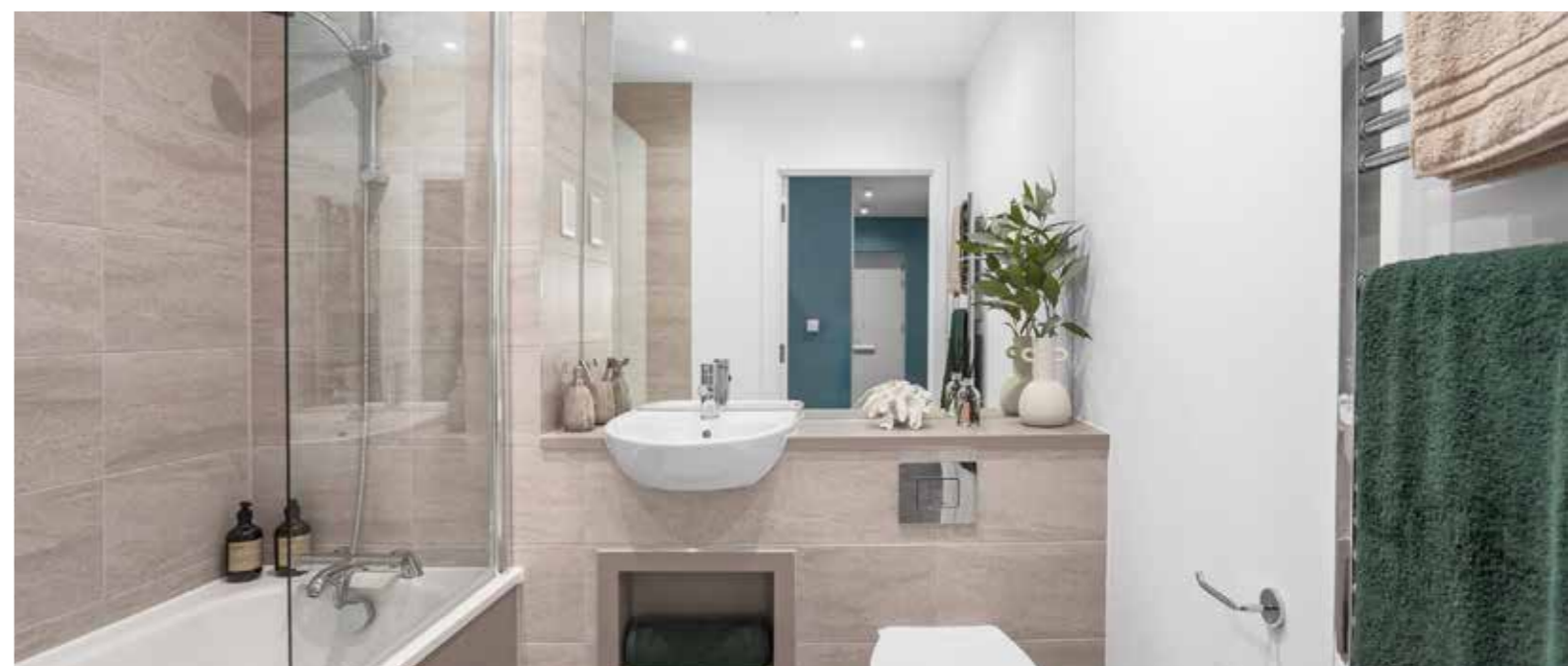
## *Heating & Electrical*

- Shaver socket to the bathroom
- LED downlights to kitchen, hallway & bathroom
- Energy efficient pendent lights to lounge and bedroom
- Underfloor heating
- Digital aerial installed to enable Freeview
- Satellite installed to enable Sky Q
- NIBE unit in the hallway cupboard and thermostats located in principle rooms

## *General*

- 5-Panel internal doors
- Front hinged wardrobes to master bedroom
- Vinyl flooring to kitchen, lounge and hallways
- Carpet to the bedroom
- Smoke alarm
- Audio/Visual Door Entry System
- Washer dryer

The specification details contained in this brochure are correct at the date of print but may vary as building work progresses. Images are representative only and are from a previous Site Sales development. The specification is not intended to form part of any offer, contract, warranty or representation and should not be relied upon as a statement or representation of fact. March 2025.





# BREATHING *space*

Riverside West's south facing communal roof terraces offer a unique vantage point to enjoy expansive river views, creating a perfect spot to unwind or recharge. Thoughtfully landscaped, these spaces invite residents to savour quiet moments outdoors without leaving home, blending natural beauty with a contemporary setting.

The terraces are designed to encourage a sense of community, providing ample seating and gathering areas where neighbours can connect, relax, and enjoy scenic surroundings together.



# SITE plan

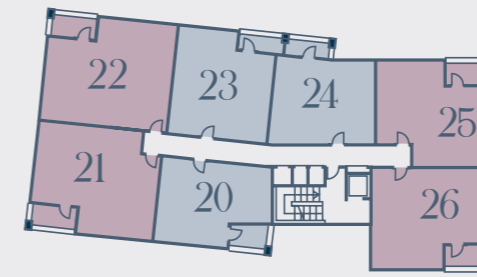


25 parking spaces available to purchase first come first serve basis.

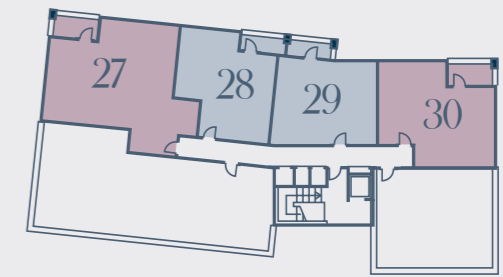
The above site plan is for illustrative purposes only. The landscaping, boundaries and positions of roads and footpaths and other facilities or amenities may change as the development proceeds. March 2025. Please speak to our Sales Consultant for further information.



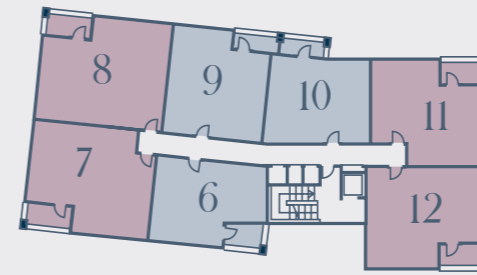
# APARTMENT locator



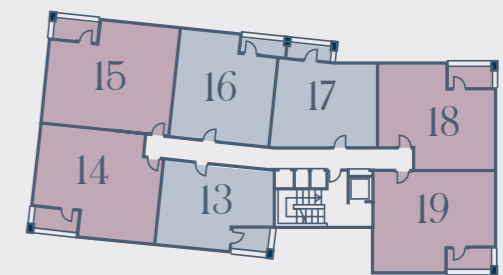
THIRD FLOOR



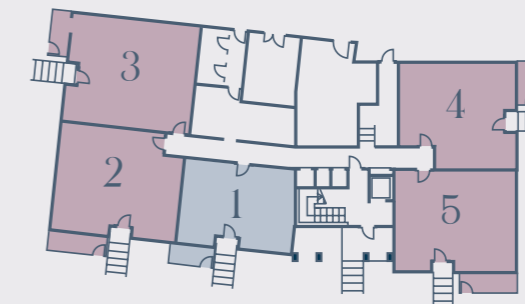
FOURTH FLOOR



FIRST FLOOR



SECOND FLOOR



GROUND FLOOR

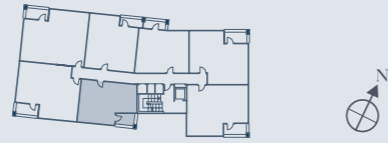
KEY

- One Bedroom Apartments
- Two Bedroom Apartments

Point from which maximum dimensions are measured. Dimensions are intended for guidance only. The developer reserves the right to vary as necessary to complete works. All measurements and areas may vary by approximately 5%. External space is indicative only. We operate a policy of continuous product development and features may, therefore, vary from time to time. This information does not constitute a contract, part of a contract or warranty. They are not intended to be used for carpet sizes, appliance sizes or items of furniture.



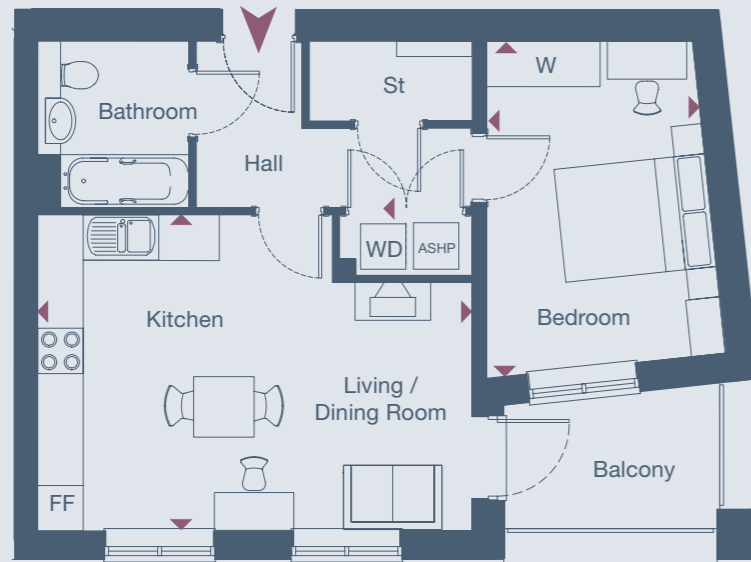
# ONE BEDROOM *apartments*



APARTMENT 20 THIRD FLOOR

APARTMENT 13 SECOND FLOOR

APARTMENT 6 FIRST FLOOR



*dimensions*

TOTAL AREA: 51 SQ M 548 SQ FT

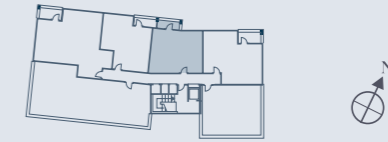
	Length x Width	Length x Width
Living / Dining / Kitchen	5.81m x 4.22m	19' 1" x 13' 10"
Bedroom	4.46m x 2.87m	14' 8" x 9' 5"

KEY

- FF - Fridge / Freezer
- WD - Washer / Dryer
- W - Wardrobe
- St - Store
- ASHP - Air Source Heat Pump

Point from which maximum dimensions are measured. Dimensions are intended for guidance only. The developer reserves the right to vary as necessary to complete works. All measurements and areas may vary by approximately 5%. External space is indicative only. We operate a policy of continuous product development and features may, therefore, vary from time to time. This information does not constitute a contract, part of a contract or warranty. They are not intended to be used for carpet sizes, appliance sizes or items of furniture.

# ONE BEDROOM *apartments*



APARTMENT 29 FOURTH FLOOR

APARTMENT 24 THIRD FLOOR

APARTMENT 17 SECOND FLOOR

APARTMENT 10 FIRST FLOOR



*dimensions*

TOTAL AREA: 52 SQ M 566 SQ FT

	Length x Width	Length x Width
Living / Dining / Kitchen	6.86m x 4.27m	22' 6" x 14' 0"
Bedroom	4.33m x 3.33m	14' 2" x 10' 11"

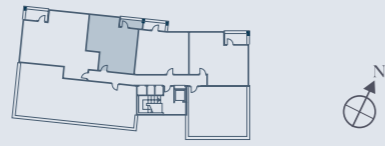
KEY

- FF - Fridge / Freezer
- WD - Washer / Dryer
- W - Wardrobe
- St - Store
- ASHP - Air Source Heat Pump

Point from which maximum dimensions are measured. Dimensions are intended for guidance only. The developer reserves the right to vary as necessary to complete works. All measurements and areas may vary by approximately 5%. External space is indicative only. We operate a policy of continuous product development and features may, therefore, vary from time to time. This information does not constitute a contract, part of a contract or warranty. They are not intended to be used for carpet sizes, appliance sizes or items of furniture.



# ONE BEDROOM *apartment*



APARTMENT 28 FOURTH FLOOR



*dimensions*

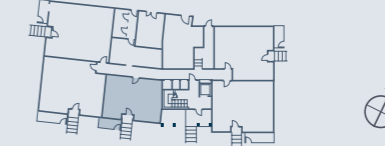
TOTAL AREA: 54 SQ M 581 SQ FT

KEY

	Length x Width	Length x Width
Living / Dining / Kitchen	6.32m x 3.13m	20' 9" x 10' 3"
Bedroom	4.59m x 3.39m	15' 1" x 11' 2"

- FF - Fridge / Freezer
- WD - Washer / Dryer
- W - Wardrobe
- St - Store
- ASHP - Air Source Heat Pump

# ONE BEDROOM *apartment*



APARTMENT 1 GROUND FLOOR



*dimensions*

TOTAL AREA: 56 SQ M 603 SQ FT

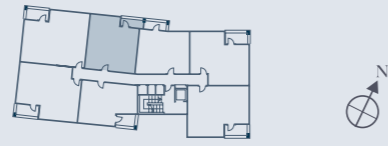
KEY

	Length x Width	Length x Width
Living / Dining / Kitchen	6.53m x 3.44m	21' 5" x 11' 3"
Bedroom	4.20m x 3.96m	13' 9" x 3' 0"

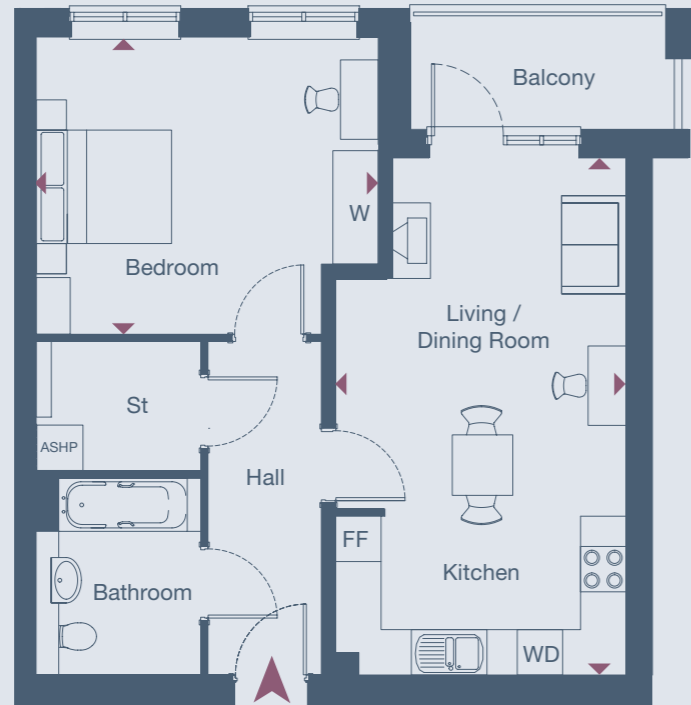
- FF - Fridge / Freezer
- WD - Washer / Dryer
- W - Wardrobe
- St - Store
- ASHP - Air Source Heat Pump



# ONE BEDROOM *apartment*



APARTMENT 9 FIRST FLOOR



*dimensions*

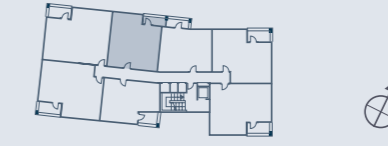
TOTAL AREA: 60 SQ M 646 SQ FT

KEY

	Length x Width	Length x Width
Living / Dining / Kitchen	6.82m x 3.81m	22' 5" x 12' 6"
Bedroom	4.51m x 3.93m	14' 9" x 12' 11"

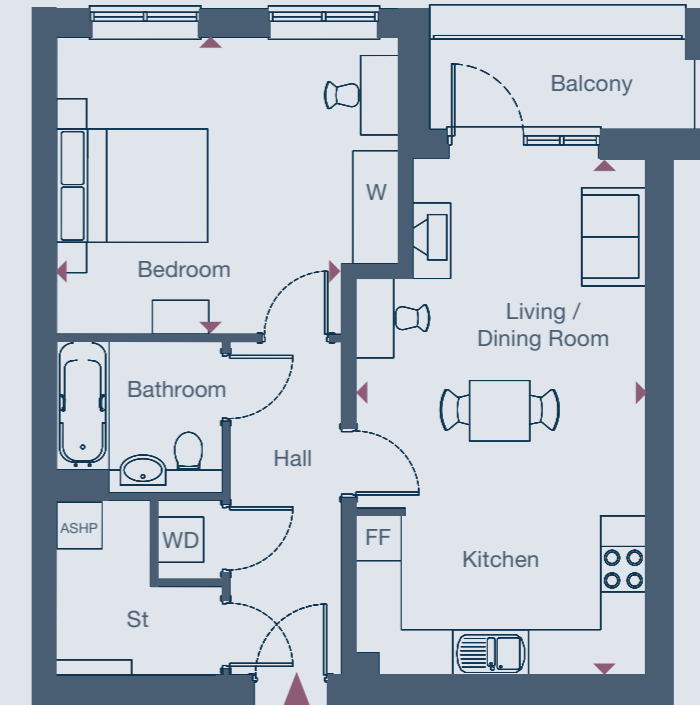
- FF - Fridge / Freezer
- WD - Washer / Dryer
- W - Wardrobe
- St - Store
- ASHP - Air Source Heat Pump

# ONE BEDROOM *apartments*



APARTMENT 23 THIRD FLOOR

APARTMENT 16 SECOND FLOOR



*dimensions*

TOTAL AREA: 60 SQ M 646 SQ FT

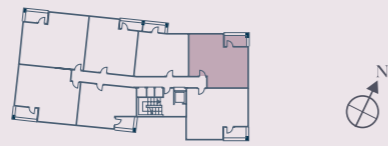
KEY

	Length x Width	Length x Width
Living / Dining / Kitchen	6.85m x 3.83m	22' 6" x 12' 7"
Bedroom	3.95m x 3.77m	12' 11" x 12' 5"

- FF - Fridge / Freezer
- WD - Washer / Dryer
- W - Wardrobe
- St - Store
- ASHP - Air Source Heat Pump



## TWO BEDROOM *apartments*



- APARTMENT 30 FOURTH FLOOR

---

- APARTMENT 25 THIRD FLOOR

---

- APARTMENT 18 SECOND FLOOR

---

- APARTMENT 11 FIRST FLOOR



*dimensions*

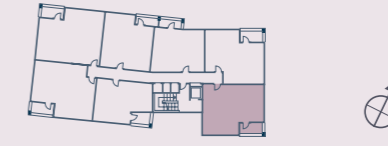
TOTAL AREA: 62 SQ M 667 SQ FT

KEY

	Length x Width	Length x Width
Living / Dining / Kitchen	6.32m x 3.84m	20' 9" x 12' 7"
Bedroom 1	5.08m x 2.77m	16' 8" x 9' 1"
Bedroom 2	3.23m x 2.34m	10' 7" x 7' 8"

- FF - Fridge / Freezer
- WD - Washer / Dryer
- W - Wardrobe
- St - Store
- ASHP - Air Source Heat Pump

## TWO BEDROOM *apartments*



- APARTMENT 26 THIRD FLOOR

---

- APARTMENT 19 SECOND FLOOR

---

- APARTMENT 12 FIRST FLOOR



*dimensions*

TOTAL AREA: 66 SQ M 712 SQ FT

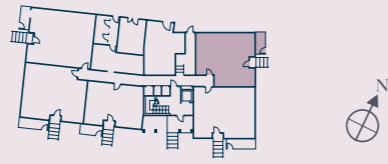
KEY

	Length x Width	Length x Width
Living / Dining / Kitchen	5.78m x 3.76m	19' 0" x 12' 4"
Bedroom 1	4.62m x 2.77m	15' 2" x 9' 1"
Bedroom 2	2.83m x 2.61m	9' 4" x 8' 7"

- FF - Fridge / Freezer
- WD - Washer / Dryer
- W - Wardrobe
- St - Store
- ASHP - Air Source Heat Pump



## TWO BEDROOM *apartments*



**APARTMENT 4** GROUND FLOOR



*dimensions*

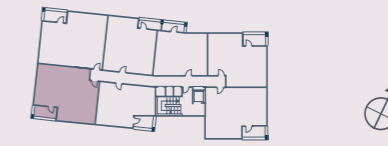
**TOTAL AREA: 68 SQ M 737 SQ FT**

**KEY**

	Length x Width	Length x Width
Living / Dining / Kitchen	6.38m x 3.86m	20' 11" x 12' 8"
Bedroom 1	4.27m x 2.75m	14' 0" x 9' 0"
Bedroom 2	3.92m x 2.63m	12' 10" x 8' 8"

- FF - Fridge / Freezer
- WD - Washer / Dryer
- W - Wardrobe
- St - Store
- ASHP - Air Source Heat Pump

## TWO BEDROOM *apartments*



**APARTMENT 21** THIRD FLOOR

**APARTMENT 14** SECOND FLOOR

**APARTMENT 7** FIRST FLOOR



*dimensions*

**TOTAL AREA: 71 SQ M 767 SQ FT**

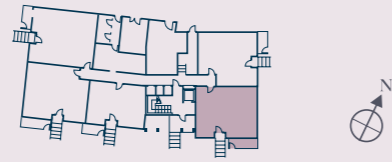
**KEY**

	Length x Width	Length x Width
Living / Dining / Kitchen	6.35m x 4.64m	20' 10" x 15' 3"
Bedroom 1	4.59m x 3.12m	15' 1" x 10' 3"
Bedroom 2	4.59m x 2.67m	15' 1" x 8' 9"

- FF - Fridge / Freezer
- WD - Washer / Dryer
- W - Wardrobe
- St - Store
- ASHP - Air Source Heat Pump



## TWO BEDROOM *apartments*



**APARTMENT 5** GROUND FLOOR



*dimensions*

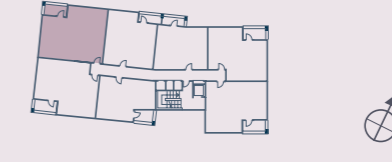
**TOTAL AREA: 73 SQ M 779 SQ FT**

	Length x Width	Length x Width
Living / Dining / Kitchen	5.39m x 4.87m	17' 8" x 16' 0"
Bedroom 1	5.10m x 2.90m	16' 9" x 9' 6"
Bedroom 2	4.41m x 2.80m	14' 6" x 9' 2"

**KEY**

- FF - Fridge / Freezer
- WD - Washer / Dryer
- W - Wardrobe
- St - Store
- ASHP - Air Source Heat Pump

## TWO BEDROOM *apartments*



**APARTMENT 22** THIRD FLOOR

**APARTMENT 15** SECOND FLOOR

**APARTMENT 8** FIRST FLOOR



*dimensions*

**TOTAL AREA: 77 SQ M 827 SQ FT**

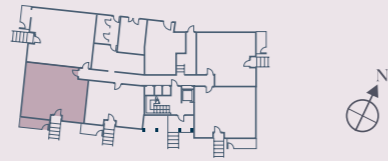
	Length x Width	Length x Width
Living / Dining / Kitchen	6.39m x 4.64m	20' 11" x 15' 3"
Bedroom 1	4.34m x 3.35m	14' 3" x 11' 0"
Bedroom 2	4.34m x 2.70m	14' 3" x 8' 10"

**KEY**

- FF - Fridge / Freezer
- WD - Washer / Dryer
- W - Wardrobe
- St - Store
- ASHP - Air Source Heat Pump



## TWO BEDROOM *apartments*



APARTMENT 2 GROUND FLOOR



*dimensions*

TOTAL AREA: 78 SQ M 837 SQ FT

	Length x Width	Length x Width
Living / Dining / Kitchen	5.15m x 4.72m	16' 11" x 15' 6"
Bedroom 1	4.57m x 3.24m	15' 0" x 10' 8"
Bedroom 2	3.84m x 3.14m	12' 7" x 10' 4"

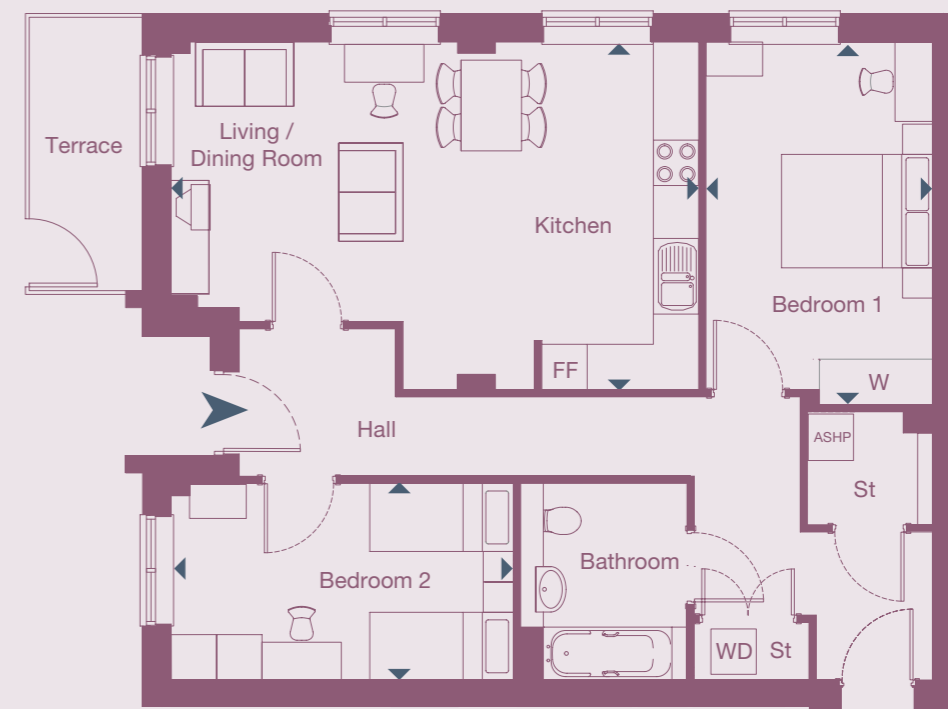
KEY

- FF - Fridge / Freezer
- WD - Washer / Dryer
- W - Wardrobe
- St - Store
- ASHP - Air Source Heat Pump

## TWO BEDROOM *apartments*



APARTMENT 3 GROUND FLOOR



*dimensions*

TOTAL AREA: 83 SQ M 892 SQ FT

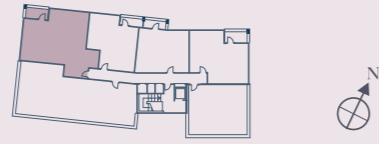
	Length x Width	Length x Width
Living / Dining / Kitchen	6.93m x 4.56m	22' 9" x 15' 0"
Bedroom 1	4.83m x 3.05m	15' 10" x 10' 0"
Bedroom 2	4.56m x 2.60m	15' 0" x 8' 6"

KEY

- FF - Fridge / Freezer
- WD - Washer / Dryer
- W - Wardrobe
- St - Store
- ASHP - Air Source Heat Pump



## TWO BEDROOM *apartments*



APARTMENT 27 FOURTH FLOOR



*dimensions*

**TOTAL AREA: 87 SQ M 936 SQ FT**

	Length x Width	Length x Width
Living / Dining / Kitchen	6.51m x 6.35m	21' 4" x 20' 10"
Bedroom 1	4.85m x 3.00m	15' 11" x 9' 10"
Bedroom 2	4.85m x 3.00m	15' 11" x 9' 10"

**KEY**

- FF - Fridge / Freezer
- WD - Washer / Dryer
- W - Wardrobe
- St - Store
- ASHP - Air Source Heat Pump

Point from which maximum dimensions are measured. Dimensions are intended for guidance only. The developer reserves the right to vary as necessary to complete works. All measurements and areas may vary by approximately 5%. External space is indicative only. We operate a policy of continuous product development and features may, therefore, vary from time to time. This information does not constitute a contract, part of a contract or warranty. They are not intended to be used for carpet sizes, appliance sizes or items of furniture.





0344 748 0063

[rsw-erith.co.uk](http://rsw-erith.co.uk)

RIVERSIDE WEST

River Haven Court, Erith, Bexley DA8 1AF

