

TO LET



Woodfield Close, Enfield, EN1
£1,750 Per Calendar Month

Anthony Webb
ESTATE AGENTS

Woodfield Close, Enfield, EN1

UNFURNISHED two bedroom newly renovated ground floor apartment located in this quiet residential development located off Lincoln Road.

Enfield Town's shops, restaurants, bus routes and mainline station are within easy walking distance.

Secure communal entrance with entry phone system • Spacious living room with bay window • Modern fitted kitchen • Modern shower room • One double bedroom • One single bedroom • New laminate flooring • Double glazing • Gas central heating • Communal parking facilities via permit.

Enfield council band D

5 weeks deposit £2019

Minimum annual household income to meet referencing criteria £52,500

- Two bedrooms
- Ground floor apartment
- Living room
- Modern fitted kitchen
- Modern Shower room
- Double glazing/gas central heating
- Secure communal entrance
- Communal parking facilities
- Available 21st of August





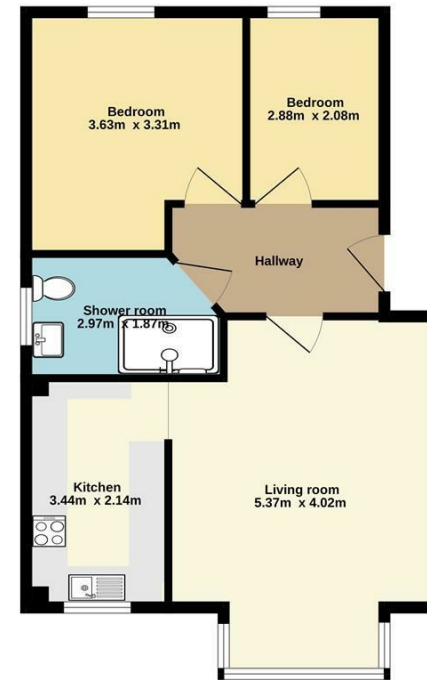
Woodfield Close Enfield EN1 2AZ

Tenure:
Gross Internal Area: 549.00 sq ft



Energy Efficiency Rating		Current	Potential
Very energy efficient - lower running costs			
(92 plus) A			
(81-91) B			
(69-80) C		77	77
(55-68) D			
(39-54) E			
(21-38) F			
(1-20) G			
Not energy efficient - higher running costs			
England & Wales		EU Directive 2002/91/EC	
Environmental Impact (CO ₂) Rating		Current	Potential
Very environmentally friendly - lower CO ₂ emissions			
(92 plus) A			
(81-91) B			
(69-80) C			
(55-68) D			
(39-54) E			
(21-38) F			
(1-20) G			
Not environmentally friendly - higher CO ₂ emissions			
England & Wales		EU Directive 2002/91/EC	

Ground floor
51.3 sq.m. approx.



TOTAL FLOOR AREA: 51.3 sq.m. approx.

Whilst every attempt has been made to ensure the accuracy of the floorplan contained here, measurements of doors, windows, rooms and any other items are approximate and no responsibility is taken for any error, omission or misstatement. This plan is for illustrative purposes only and should be used as such by any prospective purchaser. The services, systems and appliances shown have not been tested and no guarantee as to their operability or efficiency can be given.
Made with Metropix ©2023

Property particulars as supplied by Anthony Webb Estate Agents are set out as a general outline in accordance with the Property Misdescriptions Act (1991) only for the guidance of intending purchasers of lessees, and do not constitute any part of an offer or contract. Details are given without any responsibility, and any intending purchasers, lessees or third parties should not rely on them as inspection or otherwise as to the correctness of each of them. We have not carried out a structural survey and the services, appliances and specific fittings have not been tested. All photographs, measurements, floor plans and distances referred to are given as a guide only and should not be relied upon for the purchase of carpets or any other fixtures statements or representations of fact, but must satisfy themselves by or of fittings, gardens, roof terraces, balconies and communal gardens as well as tenure and lease details cannot have their accuracy guaranteed for intending purchasers. Lease details, service ground rent (where applicable) are given as a guide only and should be checked and confirmed by your solicitor prior to exchange of contracts. no person in the employment of Anthony Webb has any authority to make any representation or warranty whatever in relation to this property.

348 Green Lanes, Palmers Green, London N13 5TJ
020 8882 7888
palmersgreen@anthonywebb.co.uk
anthonywebb.co.uk

Anthony Webb
ESTATE AGENTS