



4 Ellesmere Drive, Shrewsbury, SY1 2QU

4 bedroom detached house—£500,000 Freehold

4 Ellesmere Drive, Shrewsbury, SY1 2QU

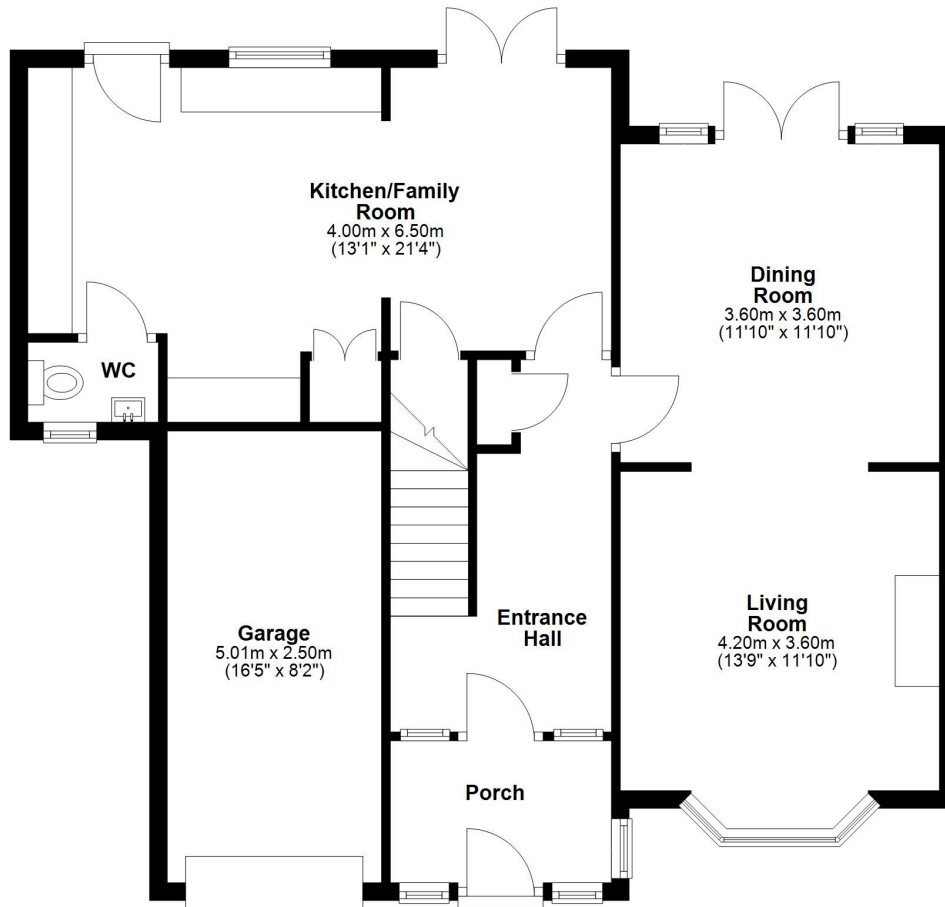
Coopergreenpooks.co.uk

£500,000 Freehold—4 bedroom detached house

sales@cgpooks.co.uk

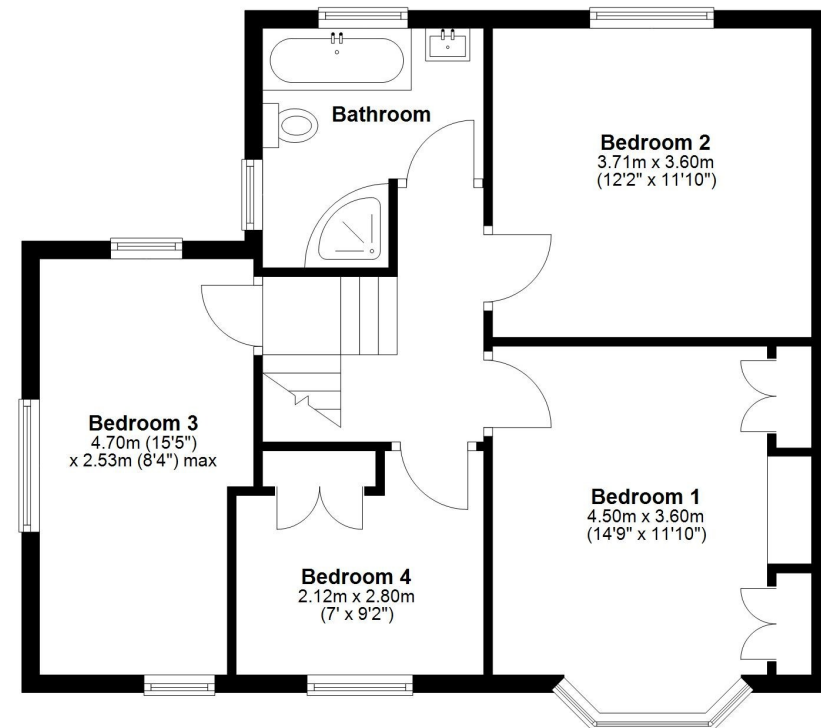
Ground Floor

Approx. 79.8 sq. metres (858.5 sq. feet)



First Floor

Approx. 57.4 sq. metres (617.4 sq. feet)



Total area: approx. 137.1 sq. metres (1475.8 sq. feet)

4 Ellesmere Drive, Shrewsbury, SY1 2QU

Coopergreenpooks.co.uk

£500,000 Freehold—4 bedroom detached house

sales@cgpooks.co.uk

Occupying a fantastic plot, tucked away at the end of a quiet cul-de-sac, this beautifully presented and extended detached house offers very practical and well-proportioned accommodation, while benefitting from a good-sized private rear garden, extensive driveway parking, and integral garage.

KEY FEATURES

- Entrance porch opening to an impressive inner hallway with useful storage and turning staircase to a split level landing
- Two generous reception rooms, which are open plan to each other, with the dining room having glazed doors onto the rear garden, and the living room having a feature fireplace with Clear View stove and bay window to front
- Lovely open plan kitchen/family room, thoughtfully designed to incorporate a range of well-fitted units and integrated appliances, access to the garden from either end, with the family room having glazed double doors, as well as a practical WC/cloakroom and under-stairs storage
- On the first floor is a master bedroom with built-in wardrobes, fitted drawers and bay window to front. There are three further bedrooms comprising a large double with views over the garden, a comfortable single with built-in cupboard, and an additional versatile bedroom which is currently used as a home office and has windows to three elevations
- The family bathroom is well-appointed, having both a bath and separate corner shower, heated towel rail, and windows to two elevations
- uPVC double glazed windows and gas fired central heating throughout
- Attractively landscaped private rear garden, laid to lawn with paved and decked terraces, mature shrubs and trees, garden store, and gated access to side
- To the front of the property is an extensive block paved driveway providing parking for at least four cars, and access to the integral garage which has power, lighting, and an electric roller-shutter door
- The property is nicely situated at the end of a cul-de-sac, within a short walk of Greenfields Primary School, some excellent amenities, and about a mile from the town centre

Cooper Green Pooks
3 Barker Street
Shrewsbury
SY1 1QF

www.cgpooks.co.uk
sales@cgpooks.co.uk
01743 276666













4 Ellesmere Drive, Shrewsbury, SY1 2QU

£500,000 Freehold—4 bedroom detached house

sales@cgpooks.co.uk

Coopergreenpooks.co.uk



Cooper Green Pooks
3 Barker Street
Shrewsbury
SY1 1QF

www.cgpooks.co.uk
sales@cgpooks.co.uk
01743 276666



rightmove 

 OnTheMarket.com



4 Ellesmere Drive, Shrewsbury, SY1 2QU

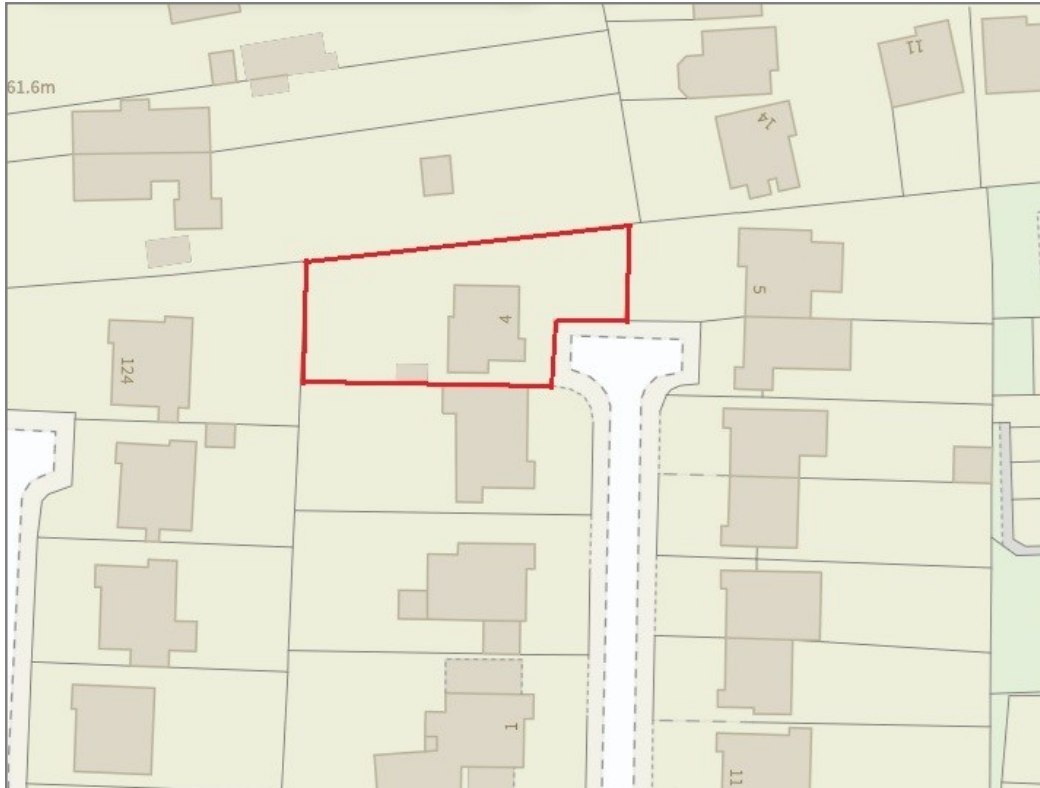
£500,000 Freehold—4 bedroom detached house

sales@cgpooks.co.uk

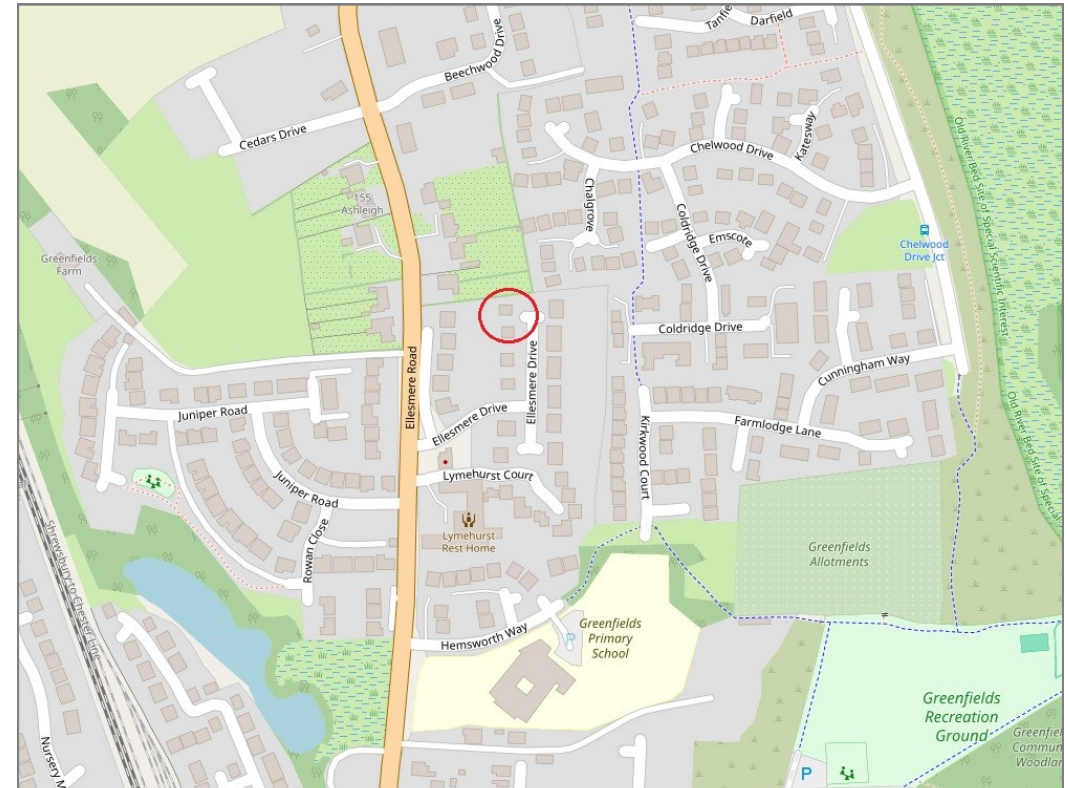
rightmove 

 OnTheMarket.com

 **RICS**
Regulated by RICS



BOUNDARIES NOT CONFIRMED



Tenure
Local Authority
Council Tax
EPC Band
Services

Freehold
Shropshire Council
Band E
TBC
All mains services are connected

 **mortgage advice available**

3 Barker St, Shrewsbury SY1 1QF

Cooper Green Pooks
01743 276666



Your home may be repossessed if you do not keep up repayments on your mortgage.

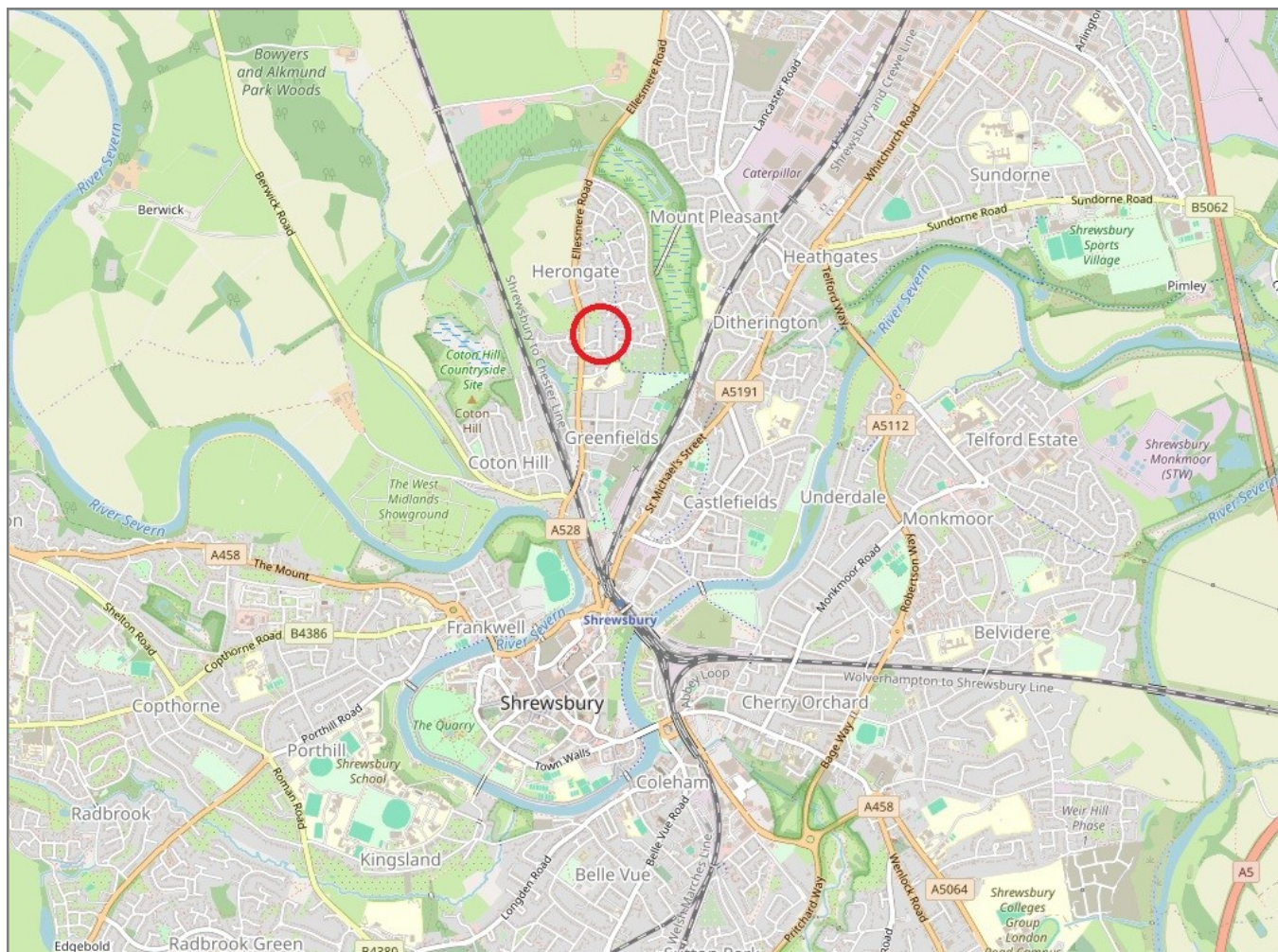
There may be a fee for mortgage advice. The actual amount you pay will depend upon your circumstances. The fee is up to 1% but a typical fee is 0.3% of the amount borrowed.

4 Ellesmere Drive, Shrewsbury, SY1 2QU

Coopergreenpooks.co.uk

£500,000 Freehold—4 bedroom detached house

sales@cgpooks.co.uk



IMPORTANT NOTICE: Cooper Green Pooks for themselves and for the lessors or vendors of this property whose agents they are give notice that: 1 No appliances, services or service installations have been tested and no warranty as to suitability or serviceability is implied. Any prospective purchaser or lessee is advised to obtain verification from their surveyor or solicitor. 2. The particulars are set out as a general outline only for the guidance of the intended purchasers or lessees and do not constitute, nor constitute part of, an offer or contract. 3. All descriptions, reference to condition and necessary permissions for use and occupation and other details are given in good faith and are believed to be correct but any intending purchasers or lessees should not rely on them as statements or representation of fact but satisfy themselves by inspection or otherwise as to the correctness of each of them. 4. No person in the employment of Cooper Green Pooks has any authority to make or give any representation or warranty whatsoever in relation to this property. 5. All rentals and prices are quoted exclusive of Stamp Duty, legal and surveyors fees and any other associated purchasers or lessees costs. 6. Floor plans are indicative only and should not be relied on. 7. The plan showing the boundary of the property is indicative only and has not been checked against the legal title so should not be relied on. 8. All dimensions, floor areas and site areas are only approximate and should not be relied on. Dimensions are generally maximum room dimension.