



Cherry Orchard Road, KT8

£1,059,250

This detached house is a brilliant home that you can really put your own mark on. The plot itself is a developers' dream (all subject to planning permission), with a huge garden, multiple points of access and spread over two titles.

Cherry Orchard Road backs onto The Thames and Towpath at West Molesey. You will find excellent local schools nearby and you are a short stroll away from the shops and cafés on Walton Road in East Molesey.

Features

Four/Five Bedrooms
Detached
Flexible Layout
Two Titles For Sale
Close To The River
Large Garden



Cherry Orchard Road, KT8

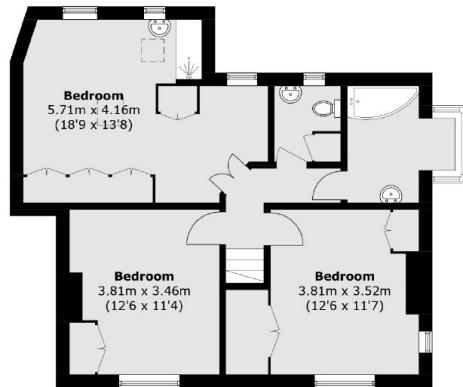
Currently set up as one house with two self contained annexes the upstairs and downstairs space can be completely tailored to how you want to use it.

As it stands the whole property has four/five bedrooms, three bathrooms, loads of reception rooms and the real show stopping element is the massive rear garden.

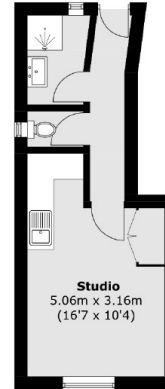
There is plenty of off street parking at the front and back where the house comes with a garage, previously the "boat house" and further parking.



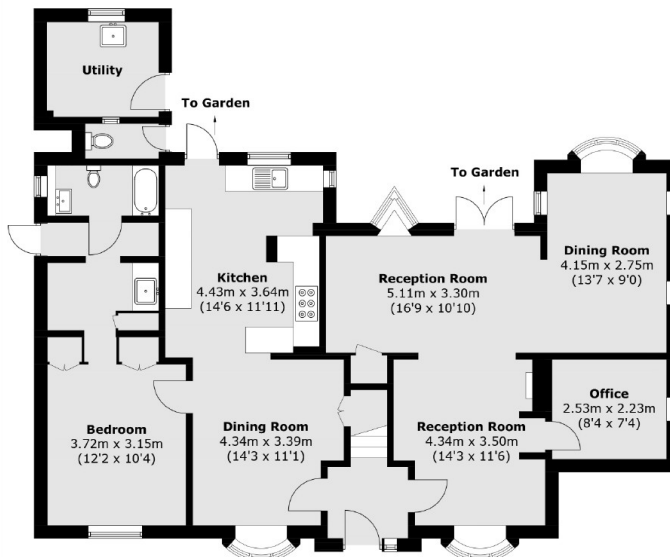
Cherry Orchard Road, West Molesey, KT8



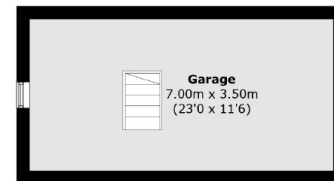
First Floor



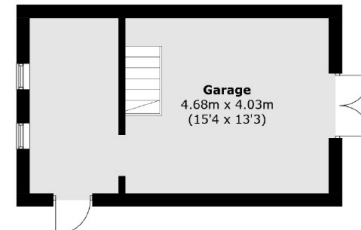
**Outbuilding
Annex - First Floor**
(Not Shown In Actual
Location / Orientation)



Ground Floor



Garage - First Floor



**Outbuilding
Garage - Ground Floor**
(Not Shown In Actual
Location / Orientation)

Approx Internal Area: 172.1 sq. m (1,852.5 sq. ft)
Outbuildings : 82.5 sq. m (888.0 sq. ft)
Total: 254.6 sq. m (2,740.5 sq. ft)
(Including Garage)