



Guide Price
£350,000

Freehold

3x  1x  2x 

**Kimberley Road,
Southsea, Hampshire,
PO4**

OVER 60?

Secure this property
for up to **59% less!**

cubitt & west
Helping you move forwards

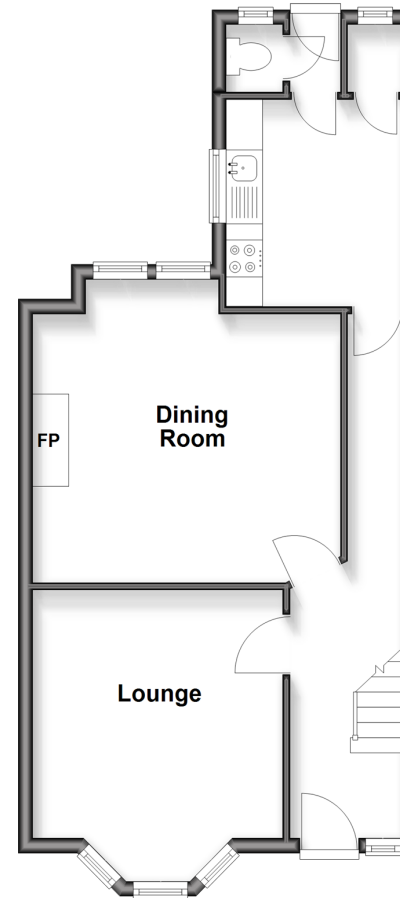


Main features

- No forward chain
- In need of modernisation
- Spacious rooms, high ceilings and an upstairs bathroom
- Private garden with a workshop
- Close proximity to the seafront

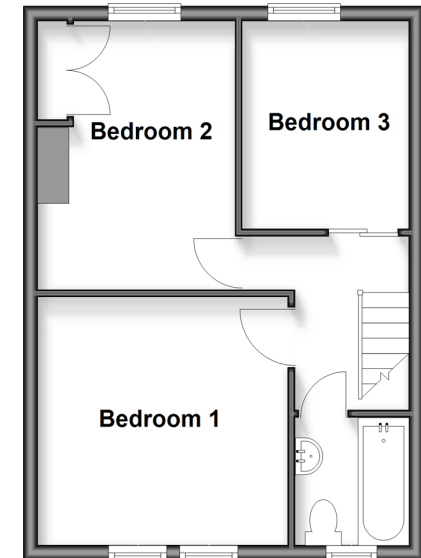
Ground Floor

Approx. 47.7 sq. metres (513.0 sq. feet)



First Floor

Approx. 36.3 sq. metres (390.8 sq. feet)



Accommodation

GROUND FLOOR

Entrance Hallway

Lounge: 13'8 x 11'6 (4.17m x 3.51m)

Dining Room: 14'0 x 13'9 (4.27m x 4.19m)

Kitchen: 9'2 x 8'0 (2.80m x 2.44m)

Cloakroom

FIRST FLOOR

Landing

Bedroom 1: 13'2 x 11'1 (4.02m x 3.38m)

Bedroom 2: 11'8 x 9'2 (3.56m x 2.80m)

Bedroom 3: 9'0 x 7'2 (2.75m x 2.19m)

Bathroom

OUTSIDE

Rear Garden

Call Southsea - 023 9229 6396 ■ cubittandwest.co.uk

- Legal advice should be taken to verify fixtures/fittings, planning, alterations and/or lease details
- Appliances & services are untested, dimensions are approximate and floor plans are not to scale
- Through a Homewise Home For Life Plan people aged 60+ can secure this property for up to 50% less, by purchasing a Lifetime Lease



42227528/20251215/JT/MO