



17 Lumley Drive

, Peterlee, SR8 1NL

Offers Over £610,000



Nestled in the serene surroundings of Lumley Drive, Peterlee, this substantial detached bungalow offers an impressive 3,232 square feet of versatile living space. With five spacious bedrooms and four well-appointed bathrooms & five reception areas, this property is perfect for families seeking comfort and convenience.

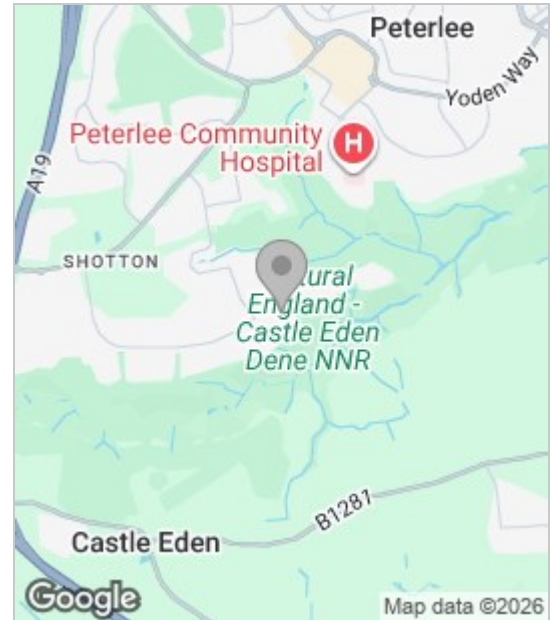
The bungalow boasts an impressive five reception rooms, providing ample space for relaxation and entertainment. Whether you envision a grand dining area, a cosy lounge, or a vibrant playroom, the layout allows for endless possibilities to suit your lifestyle. The property is further enhanced by its prime location, backing onto the picturesque Castle Eden Dene with a gate directly into the Nature Reserve, offering a tranquil backdrop and opportunities for outdoor activities.

For those with multiple vehicles, the property features a generous driveway accommodating up to eight cars, along with a double garage, ensuring that parking is never a concern. The expansive grounds provide a wonderful space for children to play or for hosting gatherings with friends and family. Solar panels included.

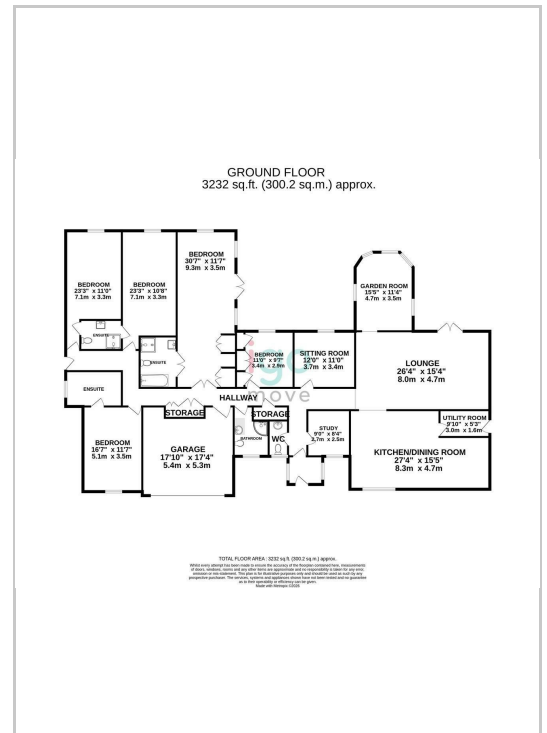
This bungalow not only offers a comfortable living environment but also presents endless potential for personalisation and enhancement. With its spacious layout and desirable location in Oakerside Park, this property is a rare find in the market. Do not miss the opportunity to make this exceptional bungalow your new home.



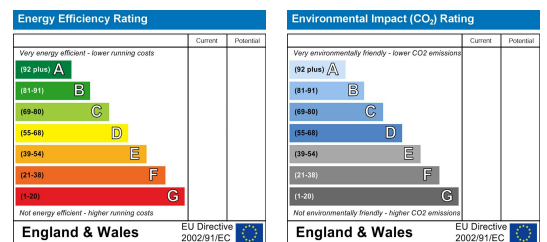
Area Map



Floor Plan



Energy Efficiency Graph



These particulars, whilst believed to be accurate are set out as a general outline only for guidance and do not constitute any part of an offer or contract. Intending purchasers should not rely on them as statements of representation of fact, but must satisfy themselves by inspection or otherwise as to their accuracy. No person in this firm's employment has the authority to make or give any representation or warranty in respect of the property.