



# LOTHROP STREET, W10

£1,100,000

Three Bedrooms  
Fully Renovated  
Guest WC  
Flexible Layout  
Queen's Park Estate  
South Facing Garden

@marshandparsons  
marshandparsons.co.uk

MARSH &  
PARSONS

# ABOUT THE PROPERTY

A beautifully renovated three bedroom Victorian house arranged over three floors, with an open plan kitchen, south facing garden and well balanced living space throughout.

The sellers have enjoyed the house as a long-term home and are now moving to be closer to family, presenting a great opportunity to acquire a well presented home on a popular residential street in North Kensington.

Situated within the Queen's Park Estate Conservation area, close to Queen's Park and its station, with a range of cafés, shops and transport links all conveniently nearby.







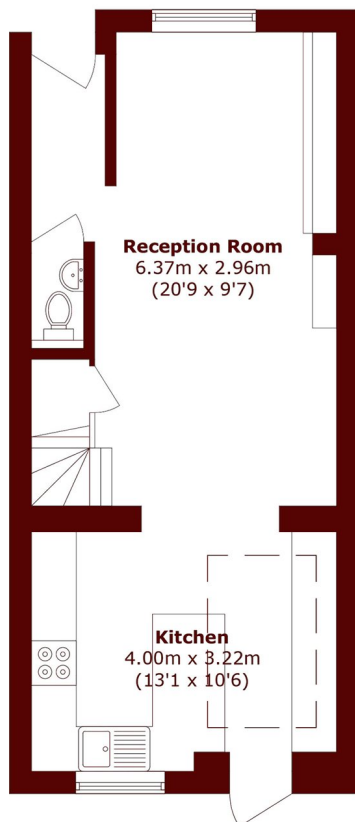
# FURTHER DETAILS

This is a thoughtfully updated home that has been renovated throughout, creating a comfortable and well finished space ready to move straight into. The ground floor offers a generous open plan kitchen and living area with excellent natural light, a guest WC and direct access to a south facing garden.

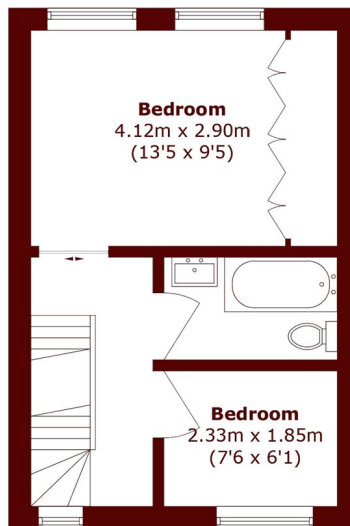
The first floor comprises a principal bedroom, a second bedroom currently used as a nursery and a family bathroom. The top floor is arranged as a study but can also be used as a double bedroom, offering flexibility depending on requirements.



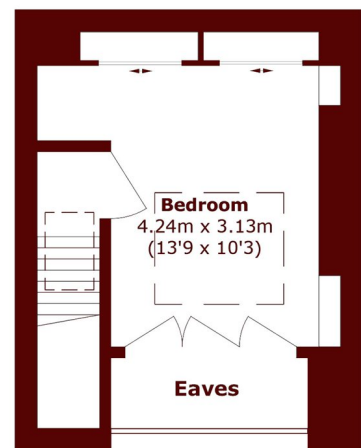
# STEP INSIDE LOTHROP STREET



**Ground Floor**



**First Floor**



**Second Floor**

Total area (approx.): 88.5 sq. m (952.6 sq. ft)  
(Excluding Eaves)

North Kensington  
020 7313 8350

Energy Rating: E We aim to make our particulars both accurate and reliable. However, they are not guaranteed; nor do they form part of an offer or contract. If you require clarification on any points then please contact us, especially if you're traveling some distance to view. Please note that appliances and heating systems have not been tested and therefore no warranties can be given as to their good working order

**MARSH &  
PARSONS**