

# Towers Wills

Town & Country

📞 01935 577 032 | 01460 298 530 | ✉ info@towerswills.co.uk



**27, Trellech Court, Yeovil, Somerset BA21 3TE**

**£190,000**

Towers Wills welcome to the market this two bedroom mid terrace home situated in the popular Abbey Manor Park development. Comprising: Hallway. Lounge/ Diner. Two bedrooms. Bathroom. Front & rear gardens. Parking for x2 vehicles. No onward chain.

**Accommodation:**

Reception Hallway

Giving access to the ground floor accommodation.

Lounge/Diner

A light and spacious main reception room with patio doors opening directly to the rear garden, perfect for indoor-outdoor living. Radiator.

Kitchen

A fitted kitchen comprising a range of gloss white wall, base, and drawer units with work surfacing over. Integrated electric oven, integrated electric hob with cooker hood over, plumbing for both washing machine and dishwasher, stainless steel sink/drainer, wall-mounted central heating boiler, and window to the front aspect.

First Floor

Master Bedroom

A generous double room with built-in storage.

Bedroom Two

With window overlooking the rear garden.

Bathroom

Fitted with a three-piece suite comprising bath with shower over, wash hand basin, and WC. Tiled surrounds and window to the rear.

**Outside**

To the front of the property is an area of garden laid to lawn with pathway approach, storm porch, and useful outside storage cupboard (housing gas meter, etc). The rear garden is fully enclosed, majority laid to lawn with patio area, garden shed, and gated rear access.

**Parking**

Allocated off-road parking for two vehicles.

## Key Features

- Popular Abbey Manor Park
- Two Bedrooms
- Front and Rear Gardens
- Off Road Parking for Two Vehicles
- NO ONWARD CHAIN

## Contact Us

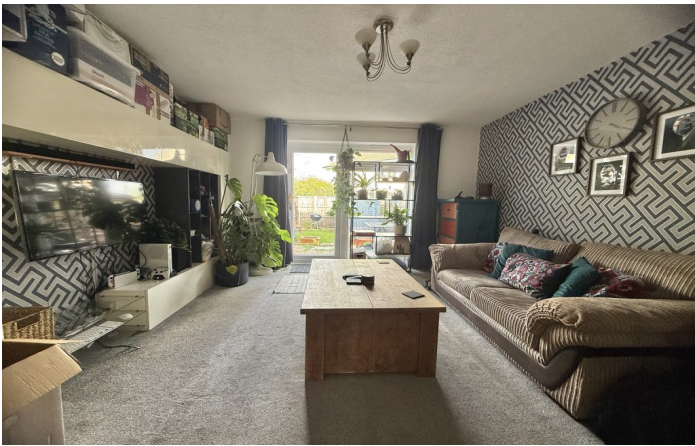
**Towers Wills Estate  
Agents - Yeovil**

114, Hendford Hill  
Yeovil

Somerset  
BA202RF

T: 01935 577032

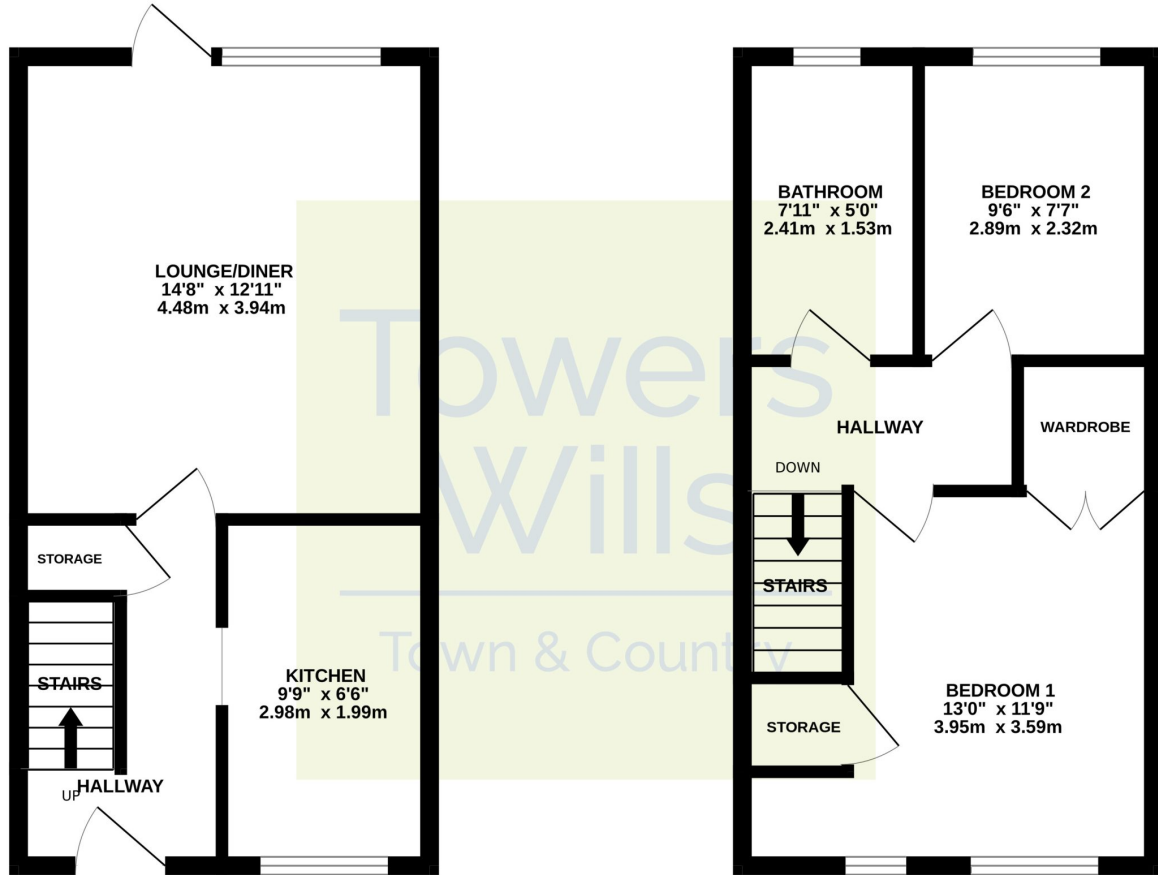
E: [info@towerswills.co.uk](mailto:info@towerswills.co.uk)



# Floor Plan

GROUND FLOOR

1ST FLOOR



Whilst every attempt has been made to ensure the accuracy of the floorplan contained here, measurements of doors, windows, rooms and any other items are approximate and no responsibility is taken for any error, omission or mis-statement. This plan is for illustrative purposes only and should be used as such by any prospective purchaser. The services, systems and appliances shown have not been tested and no guarantee as to their operability or efficiency can be given.  
Made with Metropix ©2025

Please Note No tests have been undertaken of any of the services and any intending purchasers should satisfy themselves in this regard. Towers Wills Ltd for themselves and for the vendor of this property whose agents they are, give notice that, (i) these particulars do not constitute any part of an offer or contract, (ii) all statements contained within these particulars are made without responsibility on the part of Towers Wills or the vendor, (iii) whilst made in good faith, none of the statements contained within these particulars are to be relied upon as a statement of representation or fact, (iv) any intending purchaser must satisfy him/herself by inspection or otherwise as to the correctness of each of the statements contained within these particulars, (v) the vendor does not make or give either Towers Wills or any person in their employment any authority to make or give representation or warranty whatsoever in relation to this property.

Photographs / Floor Plans Photographs are reproduced for general information and it must not be inferred that any item is included for sale with this property. Please note floor plans are not to scale and are for identification purposes only. The photographs used in these particulars may have been taken with the use of a wide angle lens. If you have any queries as to the size of the accommodation or plot, please address these with the agent prior to making an appointment to view

**Towers Wills**

The White House, 114 Hendford Hill, Yeovil BA20 2RF

Yeovil 01935 577032 / South Petherton 01460 298530

[info@towerswills.co.uk](mailto:info@towerswills.co.uk) | [www.towerswills.co.uk](http://www.towerswills.co.uk)