



**POOLE
TOWNSEND**

Weymouth Street, Walney, Barrow-in-furness, LA14 3JF

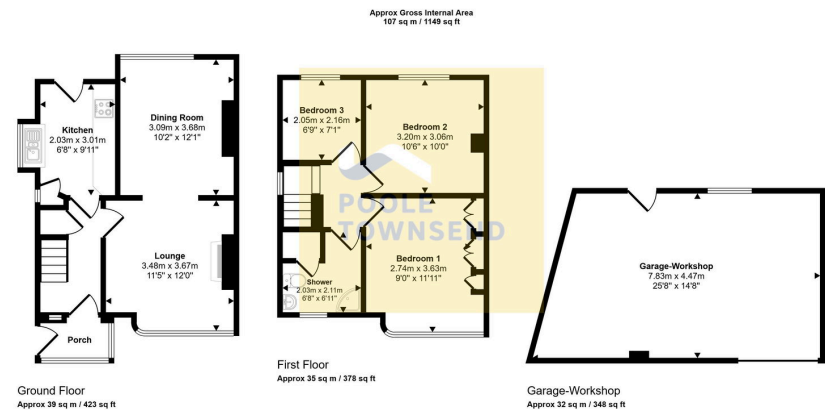
£240,000

3 1 2



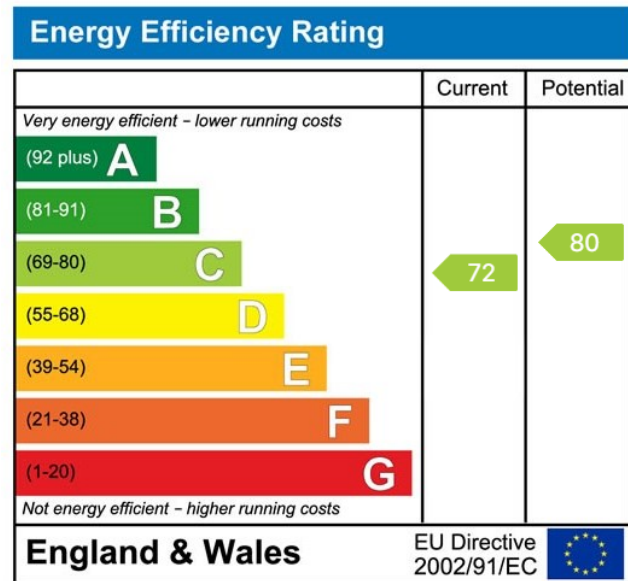
- 3 Bed Semi-Detached
- Close To Local Amenities
- A Private Driveway
- Garden To Both The Rear And back
- Ideal for Couples or Families
- Double Glazing
- Bay-Fronted Lounge
- Dining Area Overlooking The Garden
- A Modern Fitted Kitchen
- 3 Bedrooms 2 Being Doubles





This floorplan is only for illustrative purposes and is not to scale. Measurements of rooms, doors, windows, and any items are approximate and no responsibility is taken for any error, omission or mis-statement. Items of items such as bathroom suites are representations only and may not look like the real items. Made with Made Snappy 900.

NEW! Situated close to the beach on Walney and conveniently located for the golf club, schools, health centre, pharmacy and bus routes, this semi-detached home is ideal for couples or families. The property features a private driveway with lawned frontage and gated access to a generous rear garden with patio, lawn and a large garage with electric roller door, power and lighting. Inside, a porch leads to a hallway with access to a bay-front lounge opening into a dining area overlooking the garden, and a modern fitted kitchen with integrated appliances and rear access. To the first floor are three bedrooms, including two doubles, and a contemporary shower room. The home also benefits from gas central heating and is mainly double glazed.



Visit us at
www.pooletownsend.co.uk
enquiries@pooletownsend.co.uk

We are open
 Monday – Friday 9.00 – 5.00
 Saturday 9.00 – 1.00

Barrow 01229 811811
 Ulverston 01229 588111
 Grange 015395 33316
 Kendal 01539 734455
 Milnthorpe 015395 62044