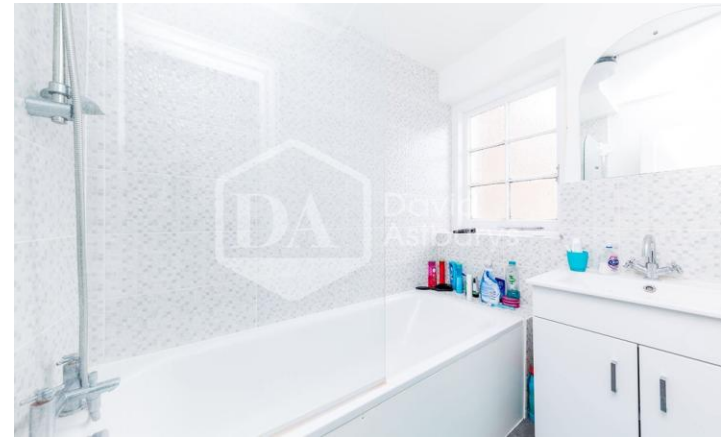




- One Double Bedroom
- Ground Floor
- Modern Kitchen and Bathroom
- Wood Floors
- Spacious Throughout
- Private Garden

## Church Lane, Hornsey, London

Stunning, spacious one double bedroom ground floor flat to rent with a private garden. The property benefits from a generous reception boasting original wood floors, high ceilings, double glazed windows and character throughout. A large bedroom, complimented by a separate modern kitchen and bathroom. Located close to Crouch End Broadway and seconds away from Hornsey station and Turnpike Lane station.





%image\_c\_14\_595%

%image\_c\_15\_326%

15 Park Road, Crouch End,  
London, N8 8TE

<http://www.davidastburys.com>  
0203 000 6787  
[crouchend@davidastburys.com](mailto:crouchend@davidastburys.com)

Agents Note: Whilst every care has been taken to prepare these particulars, they are for guidance purposes only. All measurements are approximate are for general guidance purposes only and whilst every care has been taken to ensure their accuracy, they should not be relied upon and potential tenants are advised to recheck the measurements