



**Guide Price**  
**£170,000**

**Leasehold**

2x  1x  2x 

**Viewlands, Upper Luton  
Road, Chatham, Kent,  
ME5**

**OVER 60?**

Secure this property  
for up to **59% less!**

*Wards*  
Helping you move forwards



## Main features

- Spacious first floor maisonette with parking
- Set over 2 floors with downstairs family room
- Courtyard garden
- Ideal for a first time buyer or investor looking to add to portfolio
- Great location as within walking distance to local amenities, hospital and transport links

## Accommodation

### GROUND FLOOR

Entrance Hallway  
Family Room: 13'5 x 5'9 (4.09m x 1.75m)

### FIRST FLOOR

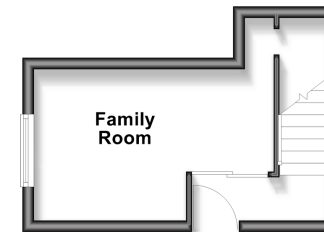
Landing  
Bedroom 1: 16'4 x 10'10 (4.98m x 3.30m)  
Bedroom 2: 10'3 x 8'6 (3.13m x 2.59m)  
Lounge: 13'5 x 12'8 (4.09m x 3.86m)  
Kitchen/Diner: 12'9 x 9'5 (3.89m x 2.87m)  
Bathroom: 7'1 x 5'4 (2.16m x 1.63m)

### OUTSIDE

Allocated Parking  
Courtyard Garden

### Ground Floor

Approx. 14.5 sq. metres (155.9 sq. feet)



### First Floor

Approx. 64.3 sq. metres (692.2 sq. feet)



Call Chatham - 01634 841243 ■ [wardsofkent.co.uk](http://wardsofkent.co.uk)

■ Through a Homewise Home For Life Plan people aged 60+ can secure this property for up to 59% less, by purchasing a Lifetime Lease



10436055/20260402/AP/RC