



## Colston Road, SW14

£2,495 Per calendar month

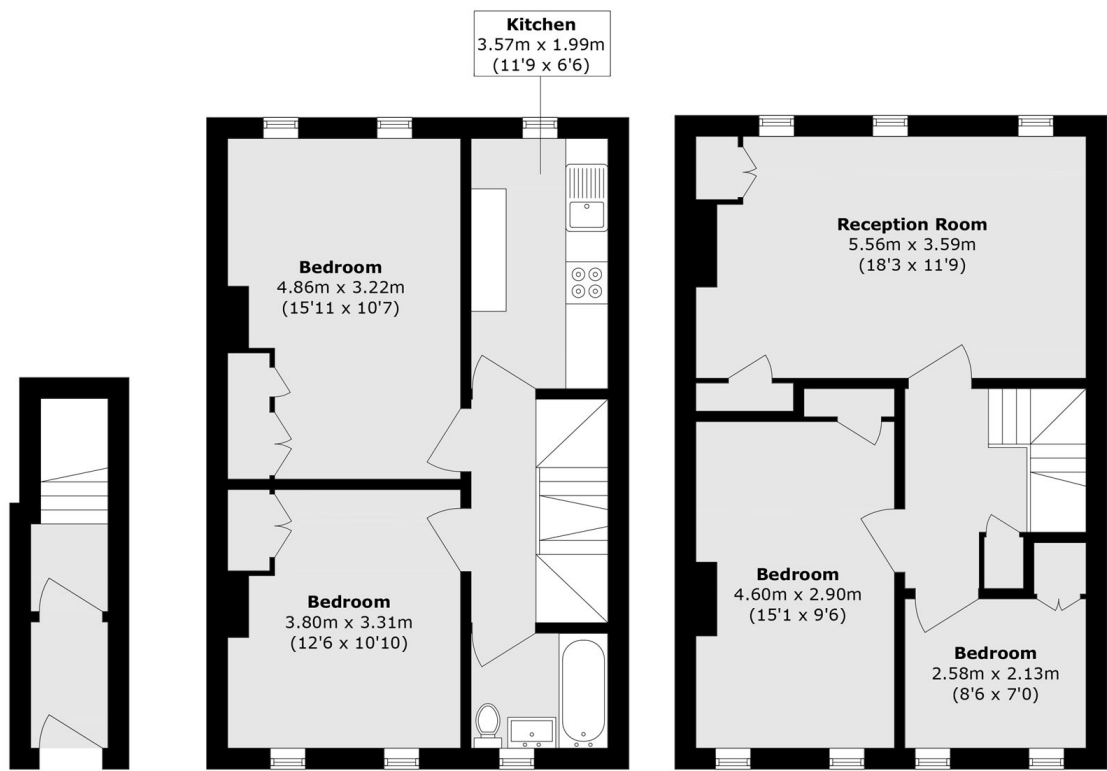
This spacious property is ideally located close to plenty of amenities in East Sheen, is presented in good condition throughout, and has flexible living space. The property has four good sized bedrooms, living room and one bathroom and measures 1087 square feet.

Colston Road is located in East Sheen, just behind the high road and close to Richmond Park. There are plenty of amenities nearby and Mortlake station has direct transport links into central London.

### Features

- Four Bedrooms
- Close to Amenities
- 1087 square feet
- Mortlake station
- Close to Richmond Park
- Good Condition

# Colston Road, London, SW14



Ground Floor

First Floor

Second Floor

Total area (approx.): 100.8 sq. m (1085.0 sq. ft)