



Chantry Street

Islington, N1

Offers in excess of £1,500,000

A stylish three-bedroom, three-storey Georgian terraced house, ideally located on a highly sought-after residential street within the Duncan Terrace/Colebrooke Row Conservation area.

CHESTERTONS



Chantry Street

Islington, N1

- Superb Angel Location
- Three Bedrooms
- 33ft South Facing Garden
- Duncan Terrace/Colebrooke Row Conservation Area



Lovingly maintained, the property offers a bright and elegant double reception room and welcoming hallway on the ground floor. The lower ground floor features a well-proportioned kitchen, with access to a separate utility area, alongside a sleek, contemporary wet room. This level also includes a generously sized bedroom. Upstairs, the first floor comprises a principal bedroom with ample built-in storage, as well as a further well-proportioned double bedroom. A generous bathroom, complete with a classic roll-top bath, is located on the half landing and serves both bedrooms. The property further benefits from a private 33ft south facing garden, providing excellent outdoor space. Chantry Street is ideally positioned for convenient access to Angel Underground station (Northern Line) and is within close proximity to the vibrant amenities of Islington Green and Upper Street.

Tenure: Freehold
Local Authority: Islington
Council Tax Band: G

Score	Energy rating	Current	Potential
92+	A		
81-91	B		
69-80	C		
55-68	D		
39-54	E		
21-38	F		
1-20	G		
		70 C	82 B

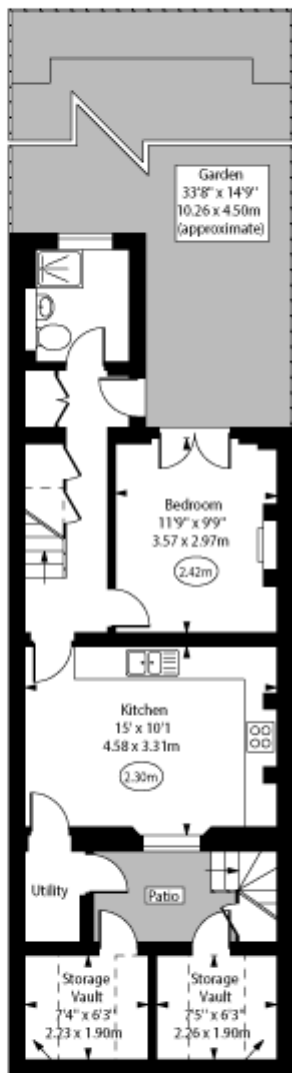
Chestertons Islington Sales

327-329 Upper Street
Islington
London
N1 2XQ
islington@chestertons.co.uk
020 7359 9777
chestertons.co.uk

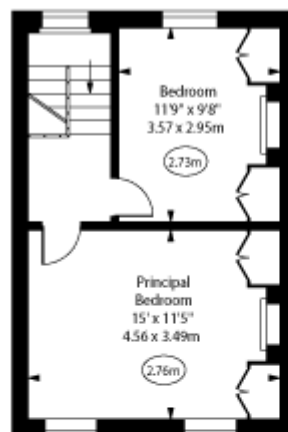
Chantry Street,
Islington, N1



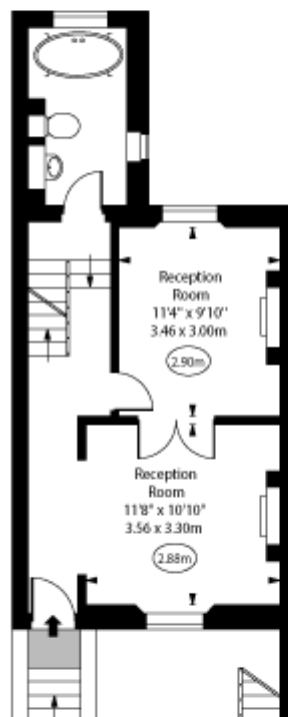
○ - Ceiling Height



Restricted Height Area
Lower Ground Floor



First Floor



Ground Floor

Approx Gross Internal Area 1218 Sq Ft - 113.15 Sq M
(Excluding Storage Vaults)

Storage Vaults Area 92 Sq Ft - 8.55 Sq M

Every attempt has been made to ensure the accuracy of the floor plan shown. However, all measurements, fixtures, fittings, and data shown are approximate interpretations and for illustrative purposes only. Measured according to the RICS. Not To Scale.
www.goldlens.co.uk
Ref. No. 031183R

Chesterton UK Services Limited trading as Chestertons for themselves and for the vendor of this property whose agents they are, give notice that (i) these particulars do not constitute any part of an offer or contract, (ii) all statements contained within these particulars are made without responsibility on the part of Chestertons or the vendor, (iii) whilst made in good faith, none of the statements contained within these particulars are to be relied upon as a statement or representation of fact, (iv) any intending purchasers must satisfy themselves by inspection or otherwise as to the correctness of each of the statements contained within these particulars, (v) the vendor does not make or give either Chestertons or any person in their employment any authority to make or give representation or warranty whatsoever in relation to this property. Wide angle lenses may be used. ©Copyright Chestertons | Chesterton UK Services Limited | Registered Office 5th Floor, The Lantern, 75 Hampstead Road, London, NW1 2PL. Registered Company Number 05334580.



This paper is
100% recyclable