



Guide Price
£230,000

Leasehold

2x  1x  1x 

**Birchington Close,
Maidstone, Kent ME14**

OVER 60?

Secure this property
for up to **59% less!**

Wards
Helping you move forwards



Main features

- First floor chain free maisonette
- Offered with a new 125 year lease
- Garage en-bloc
- Private garden with room to entertain family and friends
- Set in a quiet location nearby to local schools, shops and amenities

Accommodation

FIRST FLOOR

- Balcony
- Lounge: 17'6 x 10'0 (5.34m x 3.05m)
- Kitchen: 10'5 x 7'0 (3.18m x 2.14m)
- Bedroom 1: 14'2 x 10'9 (4.32m x 3.28m)
- Bedroom 2: 10'8 x 9'3 (3.25m x 2.82m)
- Shower Room

OUTBUILDING

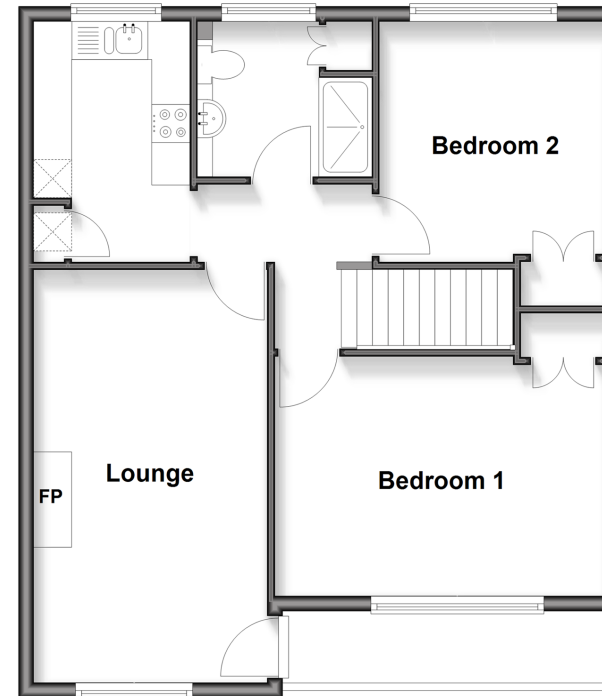
Storage

OUTSIDE

- Rear Garden
- Garage En Bloc

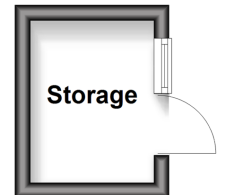
First Floor Maisonette

Approx. 60.3 sq. metres (648.8 sq. feet)



Outbuilding

Approx. 3.5 sq. metres (37.4 sq. feet)



Call Maidstone - 01622 683737 ■ wardsofkent.co.uk

■ Legal advice should be taken to verify fixtures/fittings, planning, alterations and/or lease details
 ■ Through a Homewise Home For Life Plan people aged 60+ can secure this property for up to 50% less, by purchasing a Lifetime Lease.

■ Appliances & services are untested, dimensions are approximate and floor plans are not to scale



13158758/20251004/TB/TB