



Connells

Flat A Nutts Lane
Hinckley



Property Description

Situated in a convenient and popular location close to Hinckley town centre, well-presented and deceptively spacious two-bedroom ground floor apartment, ideal for first-time buyers, investors, or those looking to downsize.

The property is accessed via a communal entrance and opens into a welcoming hallway with useful storage. The accommodation comprises a generous lounge with ample space for both living and dining furniture, enjoying plenty of natural light.

The fitted kitchen offers a practical layout with a range of wall and base units, work surfaces, and integrated cooking appliances.

There are two well-proportioned double bedrooms, both offering flexibility for use as a bedroom, home office, or guest room.

The accommodation is completed by a modern bathroom fitted with a white suite including a bath with shower over, wash hand basin, and WC.

Externally, the property benefits from communal grounds and allocated parking, adding to the overall convenience.

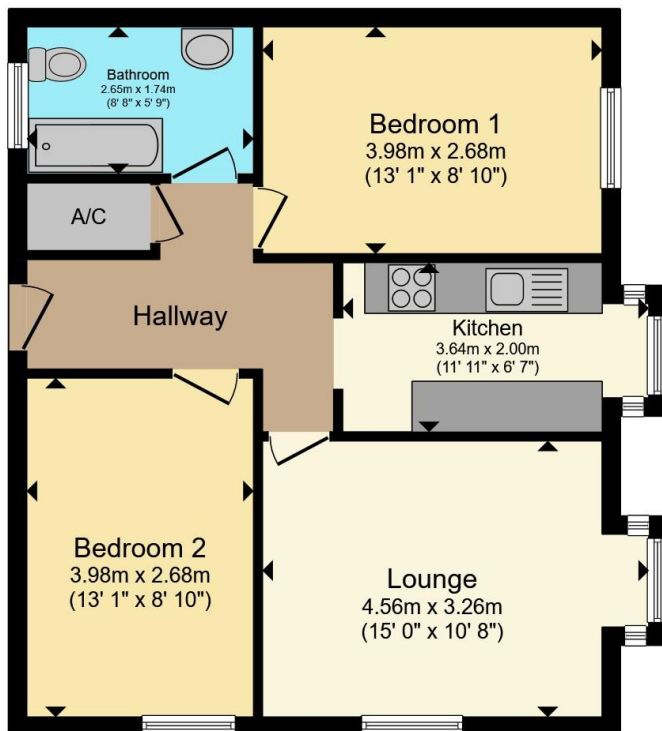
Ideally placed for access to local shops, amenities, schools, and transport links, making this a highly practical and appealing home.











Total floor area 56.4 m² (607 sq.ft.) approx

This floor plan is for illustrative purposes only. It is not drawn to scale. Any measurements, floor areas (including any total floor area), openings and orientation are approximate. No details are guaranteed, they cannot be relied upon for any purpose and they do not form part of any agreement. No liability is taken for any error, omission or misstatement. A party must rely upon its own inspection(s). Powered by www.propertybox.io

Connells

To view this property please contact Connells on

T 01455 230523
E hinckley@connells.co.uk

88 Castle Street
 HINCKLEY LE10 1DD

EPC Rating: D Council Tax
 Band: A

Tenure: Freehold

view this property online connells.co.uk/Property/HIN313875



1. MONEY LAUNDERING REGULATIONS Intending purchasers will be asked to produce identification documentation at a later stage and we would ask for your co-operation in order that there will be no delay in agreeing the sale. 2. These particulars do not constitute part or all of an offer or contract. 3. The measurements indicated are supplied for guidance only and as such must be considered incorrect. Potential buyers are advised to recheck measurements before committing to any expense. 4. We have not tested any apparatus, equipment, fixtures, fittings or services and it is in the buyers interest to check the working condition of any appliances.

Connells Residential is registered in England and Wales under company number 1489613, Registered Office is Cumbria House, 16-20 Hockliffe Street, Leighton Buzzard, Bedfordshire, LU7 1GN. VAT Registration Number is 500 2481 05.

See all our properties at www.connells.co.uk | www.rightmove.co.uk | www.zoopla.co.uk

Property Ref: HIN313875 - 0002