



**GLOUCESTER STREET**  
PIMLICO

**JACKSON-STOPS** 

## GLOUCESTER STREET, PIMLICO, SW1V

ASKING PRICE: £575 PER WEEK

A well-presented flat on the second floor of a period building in Pimlico.

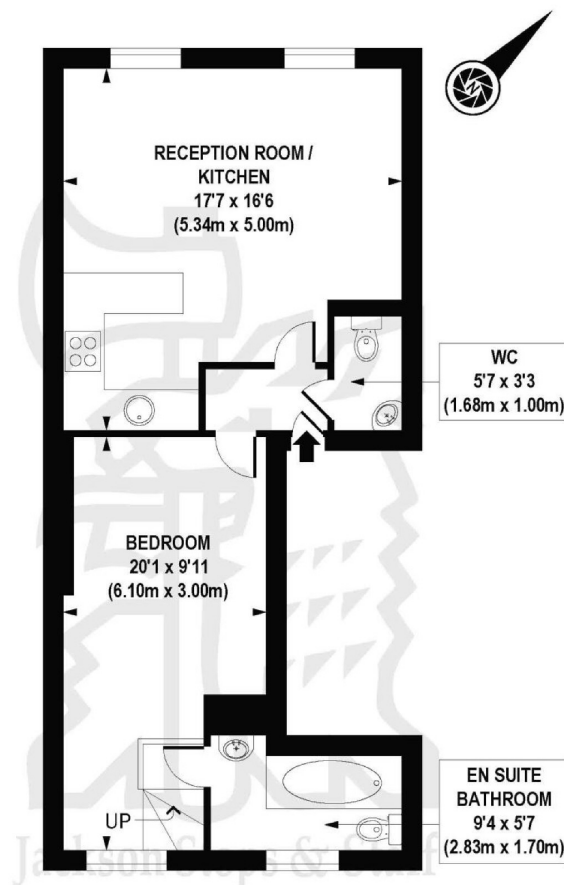
Benefitting from an open-plan kitchen/reception room, large bedroom, ensuite bathroom and separate WC.

Just 0.4 miles from Pimlico Underground Station, 0.7 miles from Victoria Station and 0.7 miles from Battersea Park.

### KEY FEATURES

- Bedroom
- Bathroom
- Kitchen
- Reception
- Furnished
- Tax Band: E

Energy Rating: C. We aim to make our particulars both accurate and reliable. However they are not guaranteed; nor do they form part of an offer or contract. If you require clarification on any points then please contact us, especially if you are travelling some distance to view. Please note that appliances and heating systems have not been tested and therefore no warranties can be given as to their good working order.



SECOND FLOOR

APPROX. GROSS INTERNAL FLOOR AREA 518 sq. ft / 48.12 sq. m

COMPLIANT WITH RICS CODE OF MEASURING PRACTICE Floorplan is for illustrative purposes only and is not to scale. Every attempt has been made to ensure the accuracy of the floorplan shown, however all measurements, fixtures, fittings and data shown are an approximate interpretation for illustrative purposes only. Liability for errors, omissions or mis-statement through negligence or otherwise is hereby excluded.

**CPI CREATIVE**  
Property Marketing

ASKING PRICE: £575 PER WEEK

PIMLICO

020 7828 4243

pimlicolettings@jackson-stops.com

jackson-stops.co.uk

**JACKSON-STOPS**

