



3

Bedrooms



1

Bathroom



Guide Price: £325,000 - £340,000

This three-bedroom end terrace property, located on Vanquisher Walk in Gravesend, offers a practical layout with one bathroom and a reception room. The home features a spacious kitchen, a comfortable living area, and a manageable garden space.

**Guide Price: £325,000 - £340,000**

Located in Gravesend, Kent, this three-bedroom end terrace property on Vanquisher Walk presents a practical living space for potential buyers. The home comprises three bedrooms, one bathroom, and a reception room, providing a functional layout suitable for various living arrangements. The kitchen is designed to accommodate essential appliances and offers ample space for meal preparation and storage. Adjacent to the kitchen, the reception room serves as a comfortable area for relaxation and entertainment.

The property includes a manageable garden, offering outdoor space for leisure activities or gardening. Although the property does not come with designated parking, street parking is available in the vicinity. The end terrace design ensures additional privacy and a sense of openness compared to mid-terrace properties.

Gravesend is a well-connected town, with convenient access to local amenities, including shops, schools, and public transport. The town centre provides a variety of shopping and dining options, while nearby parks offer green spaces for outdoor activities. The property is also within reach of Gravesend railway station, providing direct links to London and other major destinations, making it suitable for commuters.

**Dimensions Ground Floor:**

Lounge: 4.26m x 3.39m (14' x 11'1")

Dining Room: 2.69m x 2.41m (8'10" x 7'11")

Kitchen : 2.85m x 2.69m (9'4" x 8'10")

Conservatory: 2.61m x 1.85m (8'7" x 6'1")

**Dimensions First Floor:**

Bedroom One: 4.04m x 2.61m (13'3" x 8'7")

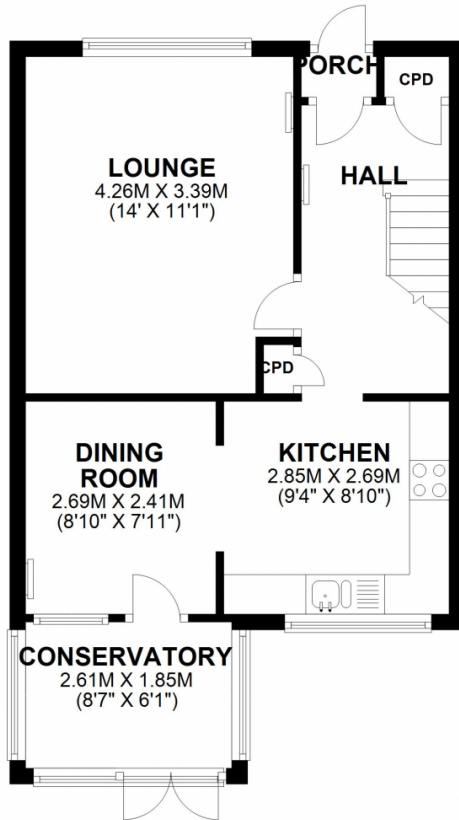
Bedroom Two: 2.90m x 2.75m (9'6" x 9')

Bedroom Three: 2.90m x 2.55m (9'6" x 9')

Bathroom / WC - 1.79m x 1.73m (5'11" x 5'8")

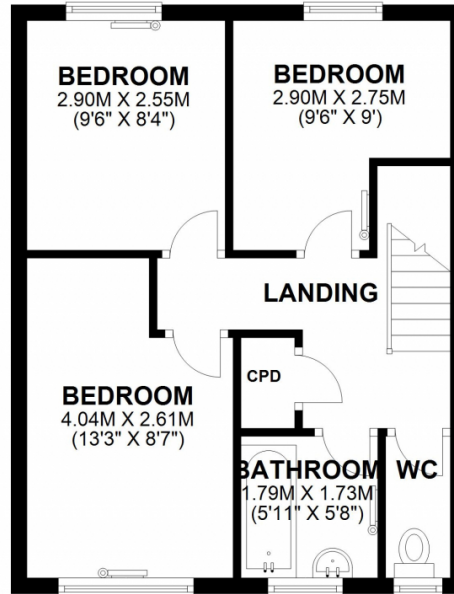
## GROUND FLOOR

APPROX. 42.9 SQ. METRES (461.5 SQ. FEET)



## FIRST FLOOR

APPROX. 37.9 SQ. METRES (408.0 SQ. FEET)



TOTAL AREA: APPROX. 80.8 SQ. METRES (869.5 SQ. FEET)

Energy Efficiency Rating		Current	Potential
Very energy efficient - lower running costs			
(92+)	<b>A</b>		
(81-91)	<b>B</b>		<b>84</b>
(69-80)	<b>C</b>	<b>69</b>	
(55-68)	<b>D</b>		
(39-54)	<b>E</b>		
(21-38)	<b>F</b>		
(1-20)	<b>G</b>		
Not energy efficient - higher running costs			
England, Scotland & Wales			EU Directive 2002/91/EC

Address: Vanquisher Walk, Gravesend, DA12

