



1 Ramage Marches

HADDINGTON, EAST LOTHIAN, EH41 3DW



2



3



2



EPC

C



MURRAY
BEITH
MURRAY

LEGAL • PROPERTY • TAX



Property Summary

Welcome to 1 Ramage Marches, an attractive semi-detached home set within a desirable residential area of Haddington, offering bright, well-balanced accommodation suited to modern living. The ground floor comprises an entrance porch and hall with WC, a south-facing dual-aspect living room, and a spacious double-aspect open-plan kitchen and dining room with sliding doors opening to the garden, complemented by a handy utility room. Upstairs, the property features a principal bedroom with a fitted wardrobe, a walk-in wardrobe and an en-suite shower room with a towel warmer, a second double bedroom with a wardrobe, and a versatile third bedroom or study, alongside a modern family bathroom with a shower-over-bath and vanity storage. Externally, there is a private garden with patio seating and a shed, as well as a private driveway.

Extras

Extras: All fitted floor and window coverings, light fittings, and integrated appliances are included in the sale.

Features

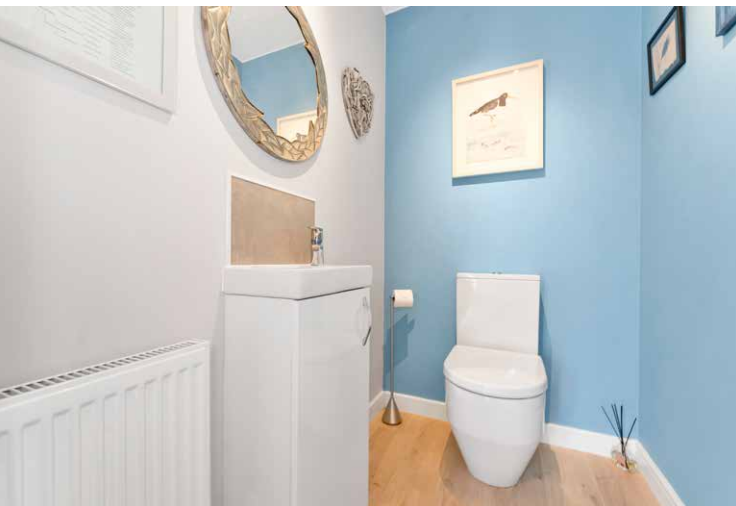
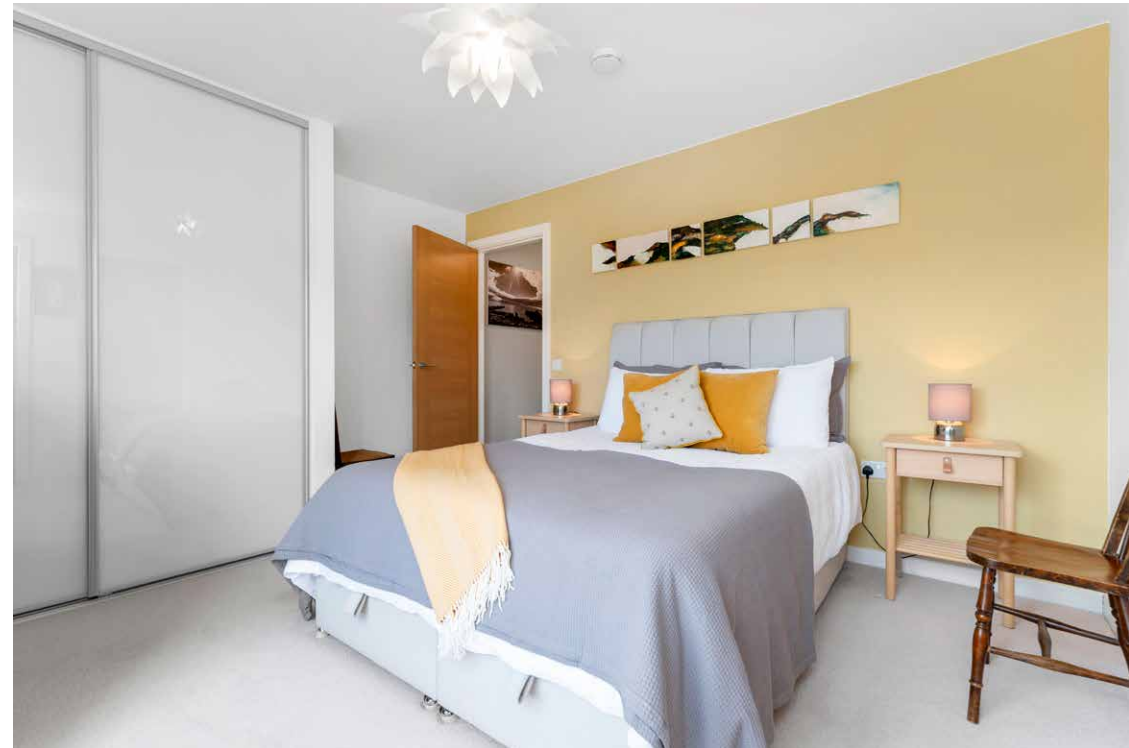
- Semi-detached house in Haddington
 - Entrance porch and hall with WC
 - Sunny dual-aspect living room
 - Modern kitchen and dining room
 - Landing with storage
 - Principal bedroom with wardrobe, walk-in wardrobe and en-suite
 - Second double bedroom with a sunny aspect and a wardrobe
 - Versatile third bedroom/study
 - Modern bathroom with a shower-over-bath
 - Handy utility room
 - Private garden with a shed and patio seating
 - Private driveway
 - Gas central heating and double glazing
 - Home Report value - £340,000
 - EPC Rating - C
-







Sunny dual-aspect living room and a modern kitchen and dining room







A principal bedroom with
a fitted wardrobe, a second
double bedroom and a
**versatile third
bedroom/study**







Floorplan

