

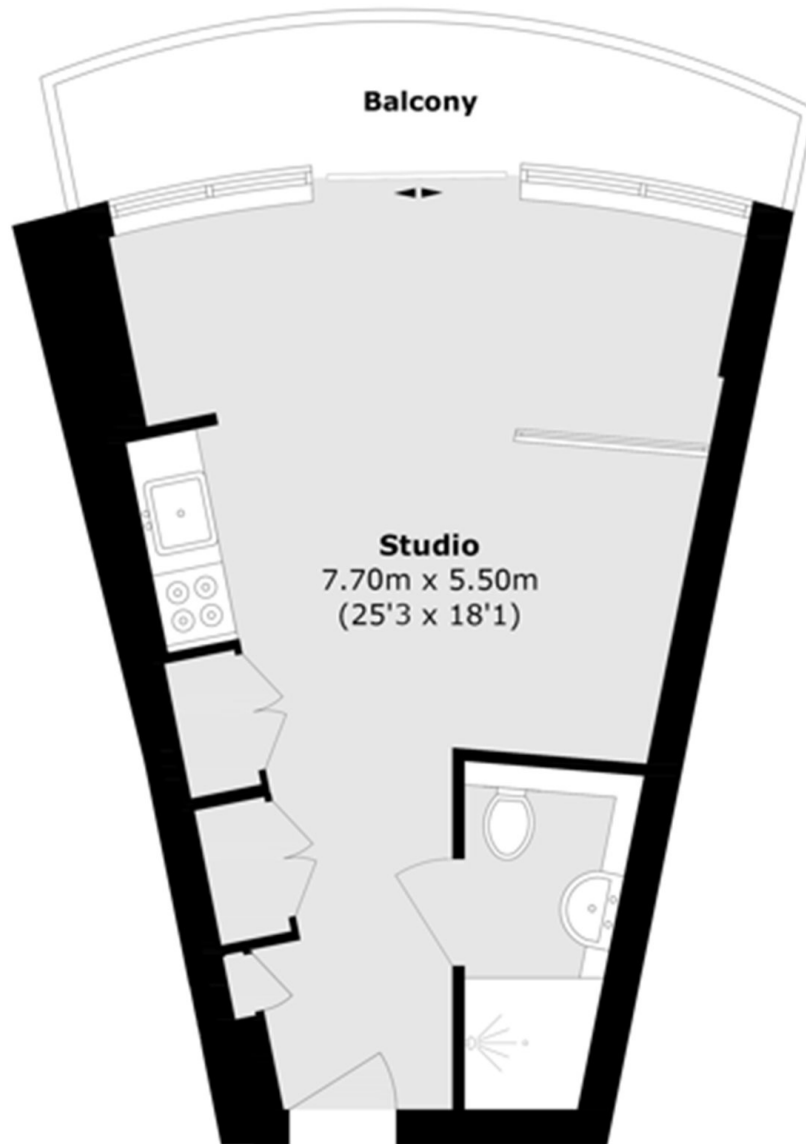


CROSSHARBOUR PLAZA, E14

£320,000

This stylish, fully furnished studio apartment offers high-specification finishes throughout, including underfloor heating, integrated Smeg appliances, and built-in wardrobes. Located in the landmark Arena Tower, the development is an iconic feature of the Canary Wharf skyline.

- Resident's Gym & Pool
- 24h Concierge Service
- Service Charge: £ 3,017
- Ground Rent: £400



Total area (approx.): 31.1 sq. m (334.7 sq. ft)
Balcony area (approx.): 7.5 sq. m (80.7 sq. ft)

LiFE RESIDENTIAL

36 Millharbour, London, E14

9JS

Sales: 020 3668 1033

Lettings: 020 3668 1030

Energy Rating: B. We aim to make our particulars both accurate and reliable. However they are not guaranteed; nor do they form part of an offer or contract. If you require clarification on any points then please contact us, especially if you're traveling some distance to view. Please note that appliances and heating systems have not been tested and therefore no warranties can be given as to their good working order.