



Merino Gardens, E1W

£853 Per week

A spacious apartment in the London Dock development, comprising two large double bedrooms with fitted wardrobes, two bathrooms, a spacious open-plan reception, a fully fitted kitchen, and a private balcony.

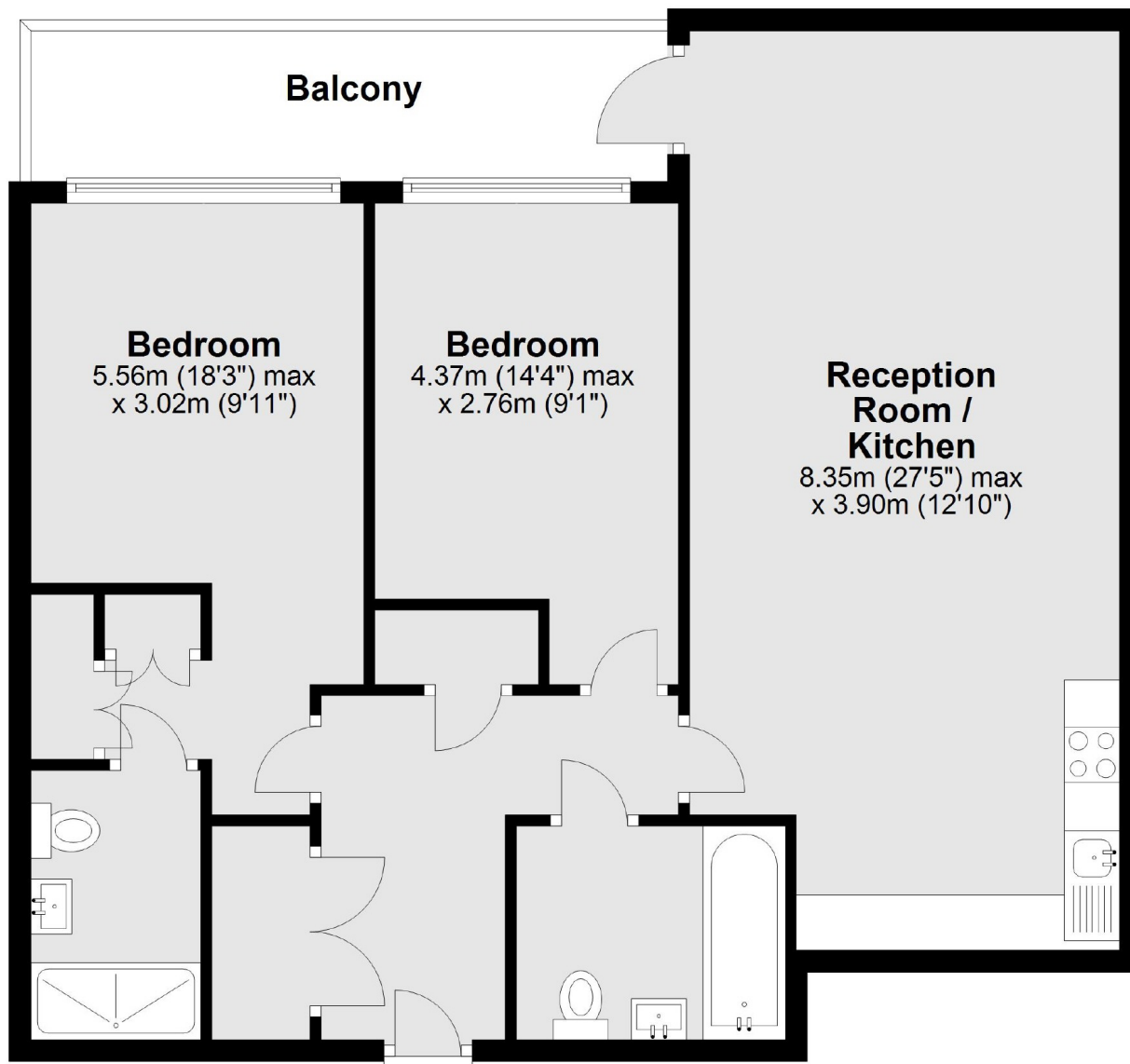
London Dock development is located adjacent to St Katharine's Dock and Tower Bridge, with a variety of bars and restaurants nearby.

Features

- Two Bedrooms
- Two Bathrooms
- Private Balcony
- High Specification Gym/Spa/Concierge
- Furnished

Merino Gardens, London, E1W

11th Floor



Main area: Approx. 78.7 sq. metres (847.5 sq. feet)
Plus balconies, approx. 7.9 sq. metres (85.0 sq. feet)