

abbotFox

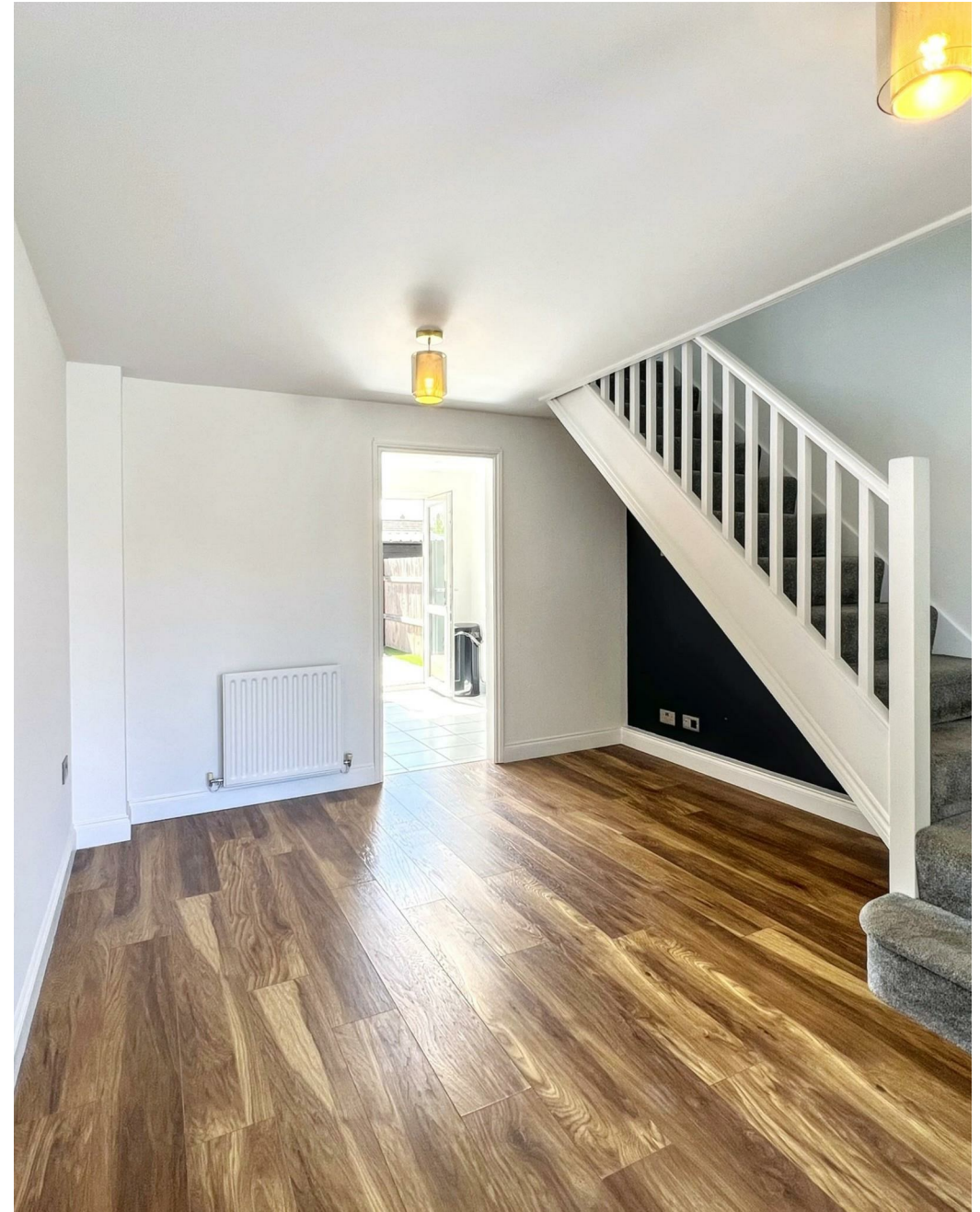


Margaret Reeve Close, Wymondham  
*£1,200 PCM*

“

We are a team of genuine individuals who hold a deep passion for both property and marketing. Collectively, we bring over 70 years of experience in the property market of Norfolk and Suffolk. Our affection for both counties runs deep, and we are enthusiastic about sharing our passion with you.

Colin McKenzie | **Branch Partner**







## THE DETAIL \_\_\_\_\_

Nestled in the charming area of Wymondham, Margaret Reeve Close presents a delightful opportunity to acquire a modern two-bedroom house. This property is perfect for those seeking a comfortable and stylish living space in a friendly community.

As you step inside, you will be greeted by a contemporary interior that has been thoughtfully designed to meet the needs of modern living. The open-plan layout creates a sense of space and light, making it an ideal setting for both relaxation and entertaining. The two well-proportioned bedrooms offer a peaceful retreat, ensuring a restful night's sleep.

One of the standout features of this property is the lovely garden, which provides a private outdoor space for you to enjoy. Whether you wish to cultivate your green thumb or simply relax in the fresh air, this garden is a wonderful addition to your home. Furthermore, the convenience of a garage adds to the appeal, offering ample storage or secure parking for your vehicle.

Wymondham itself is a vibrant town with a rich history and a variety of local amenities, including shops, schools, and parks. The community is welcoming, making it an excellent place for families, couples, or individuals alike.

In summary, this modern two-bedroom house on Margaret Reeve Close is a fantastic opportunity for anyone looking to settle in Wymondham. With its attractive features, including a garden and garage, it promises a comfortable and enjoyable lifestyle. Do not miss the chance to make this lovely property your new home.







## THE HIGHLIGHTS \_\_\_\_\_

- Two Bedrooms
- Landscaped garden
- Modern Throughout
- New Windows
- 2 Allocated Parking Spaces
- Wymondham

*Let's talk*

01603 660000

[sales@abbotfox.co.uk](mailto:sales@abbotfox.co.uk)

[@abbotfox](#)

EPC RATING -

Disclaimer – In accordance with the Property Misdescriptions Act, the company abbotFox gives notice that all descriptions, references to condition, necessary permissions for use and other details are given in good faith and believed to be correct, but any purchaser should not rely on them as statements of fact, and must satisfy themselves by inspection or other means, as to their accuracy.