

Amersham Street, Salford

Salford



In Excess of £390,000

Amersham Street

Salford

Stunning four bedroom townhouse property situated over three fantastic floors! Boasting three bathrooms and a modern kitchen diner!

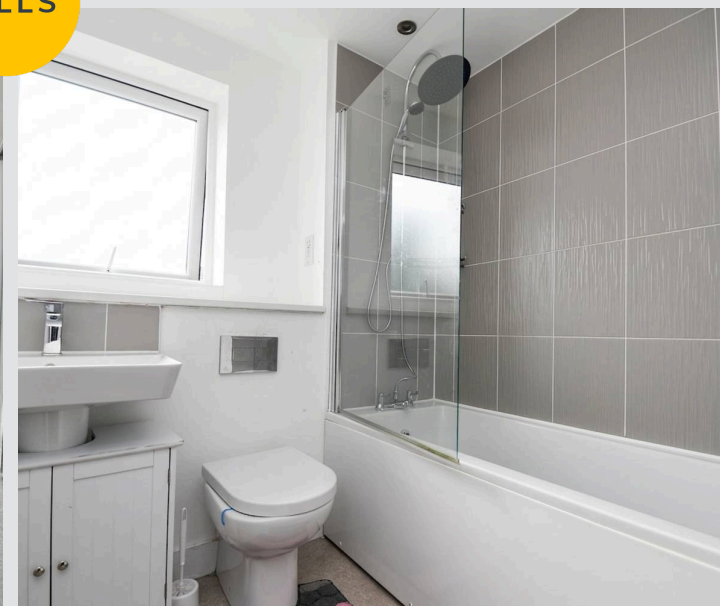
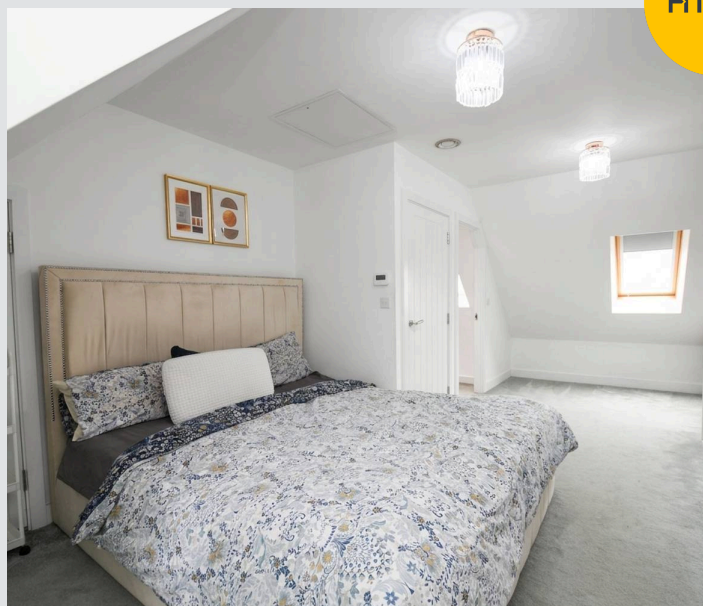
Council Tax band: C

Tenure: Freehold

- Modern four bedroom townhouse property situated over three fantastic floors
- Family lounge with patio doors to the rear
- Contemporary kitchen diner
- Modern three piece bathroom suite, en-suite to the master and a downstairs W.C.
- Four generous sized bedrooms
- Large master bedroom on the top floor which houses a modern en-suite
- Private Parking Space to the Front
- Rear garden complete with laid-to-lawn grass and paving
- Within Walking Distance of Salford Quays & Media City
- Close to Langworthy Tram Stop, with Direct Access into Manchester City Centre



HILLS



Entrance hallway

18' 5" x 3' 7" (5.62m x 1.10m)

Downstairs W.C.

3' 7" x 7' 3" (1.09m x 2.20m)

Kitchen Diner

19' 5" x 8' 9" (5.93m x 2.66m)

Lounge

15' 10" x 10' 6" (4.82m x 3.20m)

Bedroom 1

12' 4" x 23' 2" (3.75m x 7.05m)

Bedroom 2

9' 7" x 11' 1" (2.92m x 3.38m)

Bedroom 3

9' 7" x 12' 8" (2.92m x 3.85m)

Bedroom 4

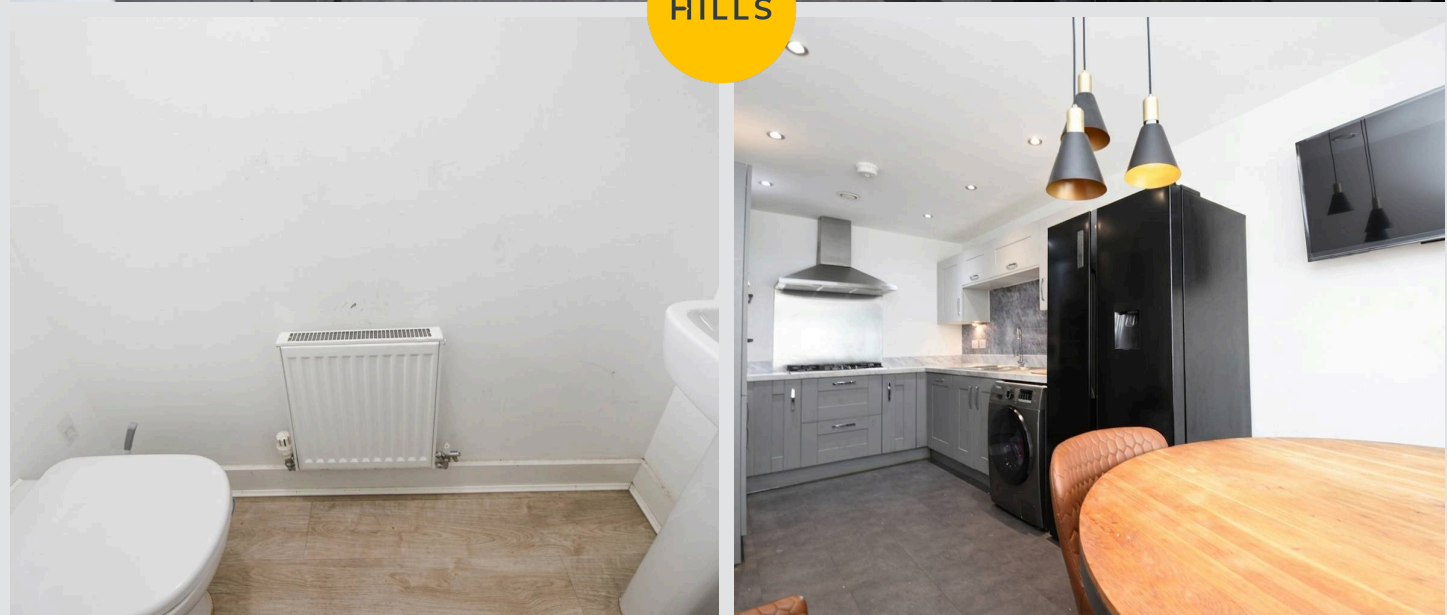
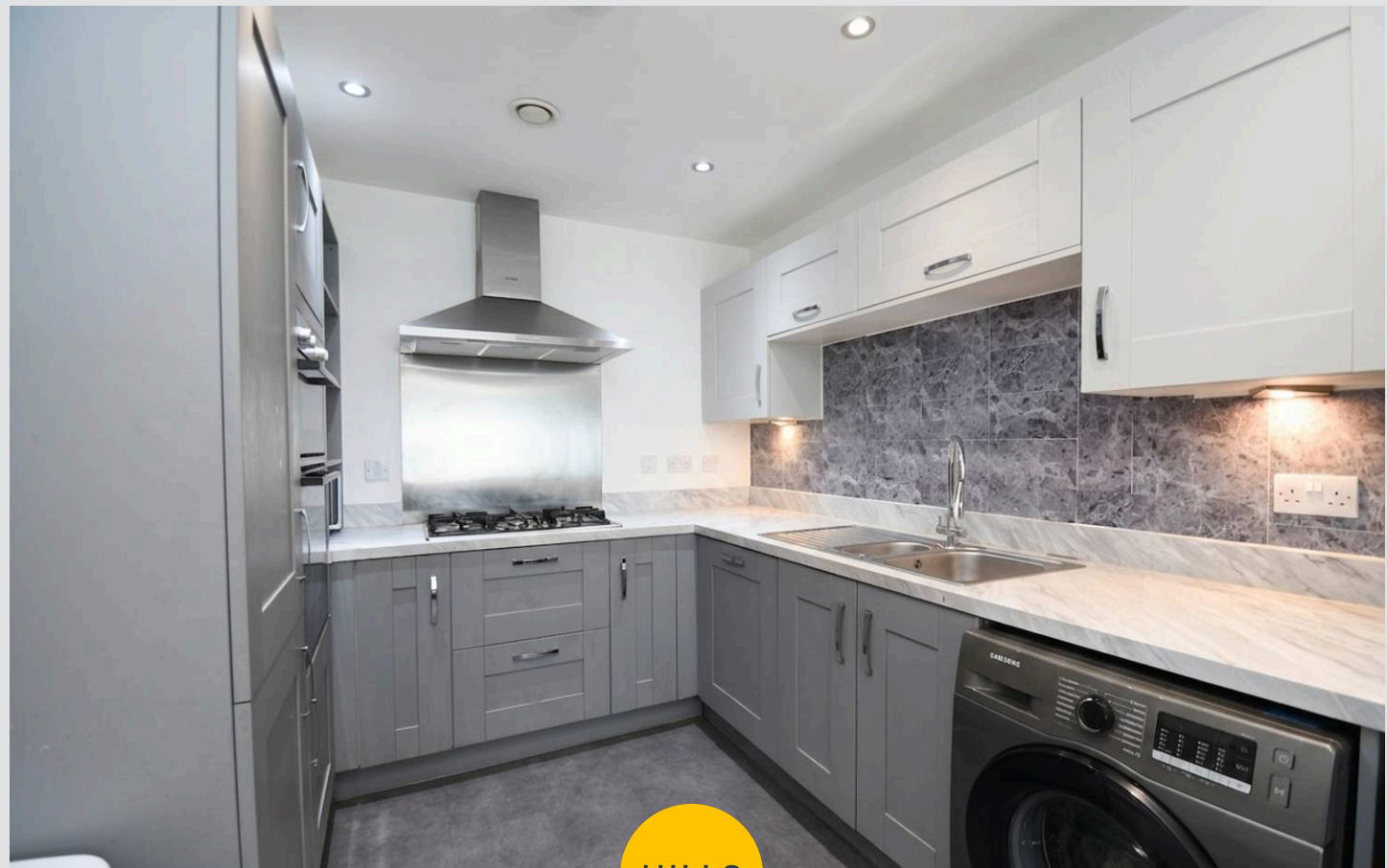
10' 8" x 7' 4" (3.25m x 2.23m)

Bathroom

8' 1" x 6' 7" (2.47m x 2.01m)

En-Suite

5' 7" x 10' 6" (1.70m x 3.19m)





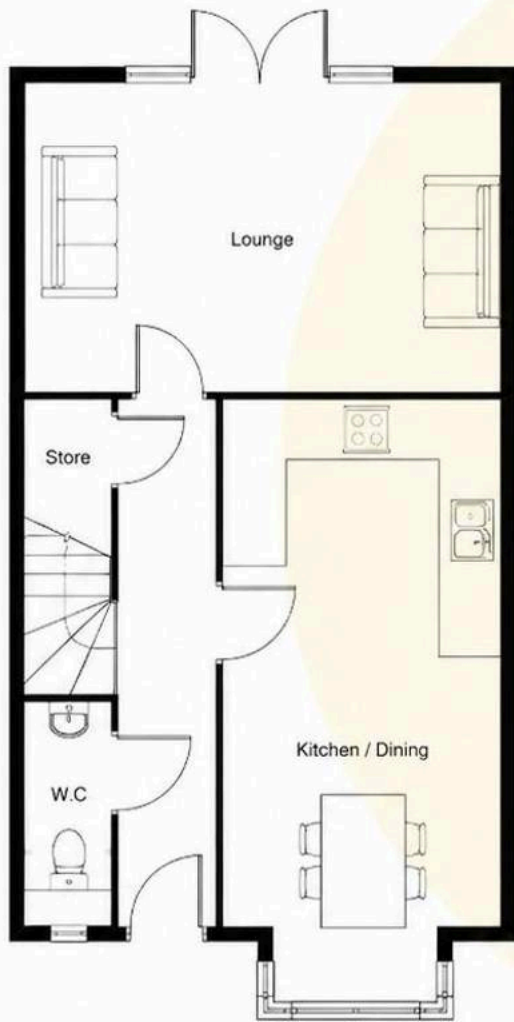
HILLS



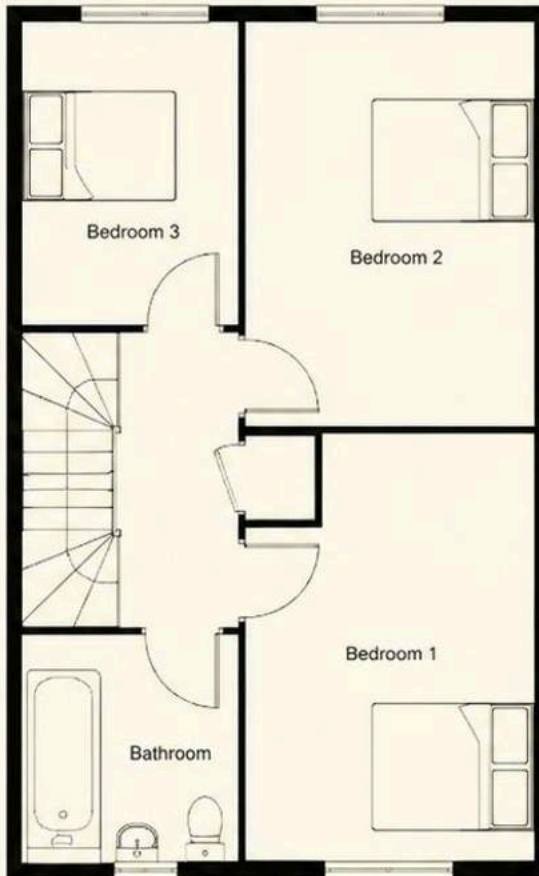


HILLS

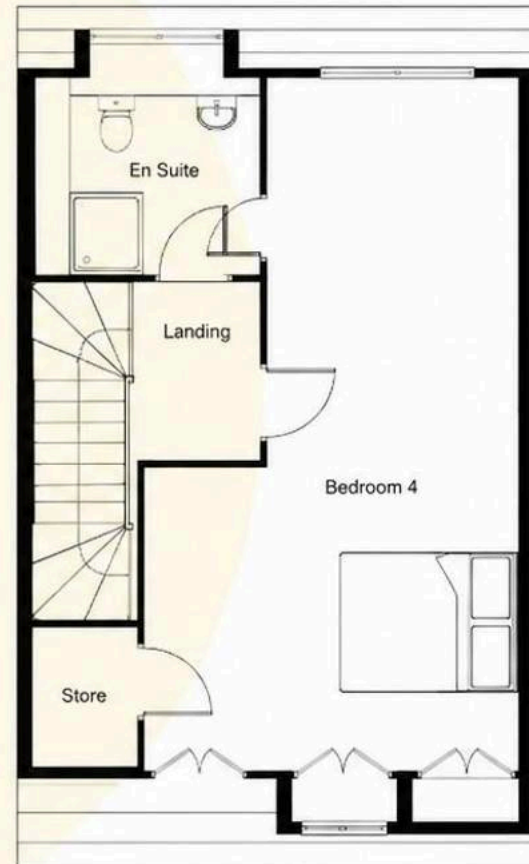




Ground Floor



First Floor



Second Floor



Hills | Salfords Estate Agent

Hills Residential, Sentinel House Albert Street – M30 0SS

0161 707 4900

sales@hills.agency

www.hills.agency/



By law, we are required to conduct anti-money laundering checks on all potential buyers and sellers. In line with HMRC guidelines, our trusted partner, Coadjute, will securely manage these checks on our behalf. A non-refundable fee of £45 + VAT per person will apply, and Coadjute will handle the payment. Once an offer is accepted, Coadjute will send a secure link for you to complete the biometric checks. These checks must be completed before we can send the memorandum of sale to all parties. PLEASE NOTE: The Agent has not tested any equipment, fixtures, fittings or services so cannot verify that they are in working order or fit for the purpose. References to the properties tenure are based on information supplied by the seller. You are advised to check the availability of this property before travelling any distance to view. Every effort has been made to ensure these particulars are correct and not misleading but their accuracy is not guaranteed nor do they form part of any contract.