



## One Thames Quay, 222 Marsh Wall

, London E14 9PH

- Spacious 1 Bedroom Apartment
- Floor-to-Ceiling Windows
- 24-Hour Concierge
- Excellent Transport Links: Close to Canary Wharf Stations
- CTB-E
- Contemporary Open-Plan Kitchen
- Private Balcony
- On-Site Gym
- EPC-B

**£2,950 Per Month**



Local Authority **Tower Hamlets**  
 Council Tax Band **E**  
 EPC Rating **B**

## ONE BEDROOM

TYPE 1A: APARTMENTS 3, 7 & 8  
 DELUXE APARTMENTS: FLOORS 14-35  
 PREMIER APARTMENTS: FLOORS 36-45  
 Apartment 7 is Type 1A on Floors 17 and 39 only.



Total Internal Area	53 - 56 sq m	575 - 605 sq ft
Kitchen	3.80m x 1.85m	12'6" x 6'1"
Living	6.26m x 5.00m	20'7" x 16'5"
Bedroom	3.92m x 3.84m	12'10" x 12'7"
Balcony*	2.14m x 2.51m	7'1" x 8'3"

S Storage  
 U Utility  
 W Fitted Wardrobe

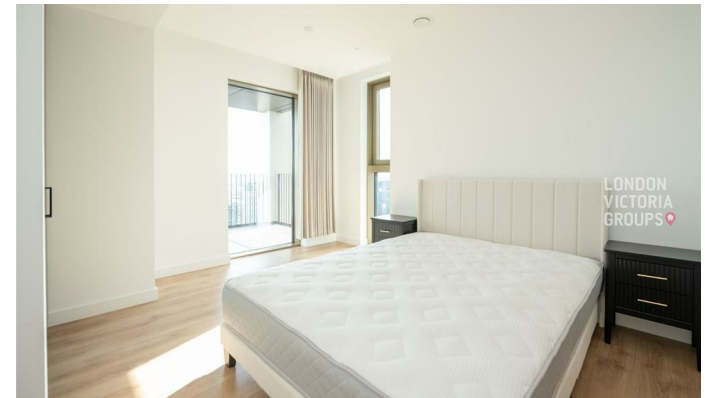
\*Balcony not included in Total Internal Area

Floor designs and layouts are indicative only and may change. The specification of the areas is the anticipated specification as at the date this brochure was prepared, but may be subject to change in accordance with permitted variances under the apartment sales contracts. All sales remain subject to contract. All information regarding prospective amenity provisions represents current intention only and the final provision of amenity may change in accordance with permitted variances under the apartment sales contracts. Please consult your sales contract for information.

80 - 81



LONDON VICTORIA GROUPS



LONDON VICTORIA GROUPS



LONDON VICTORIA GROUPS

**London Office Office**  
 Spaces Victoria, 25 Wilton Road, Pimlico,  
 London, SW1V 1LW

**Contact**  
 020 3084 3094  
 XL@londonvictoriagroups.co.uk  
 www.londonvictoriagroups.co.uk

Agents Note: Whilst every care has been taken to prepare these particulars, they are for guidance purposes only. All measurements are approximate and for general guidance purposes only and whilst every care has been taken to ensure accuracy, they should not be relied upon and potential buyers/tenants are advised to recheck the measurements.