

# Garden Village

Upper Tean, Stoke-on-Trent, ST10 4JG

John German





# Garden Village

Upper Tean, Stoke-on-Trent, ST10 4JG

£295,000

Handsome Traditional Semi-Detached Home with Substantially Extended and Balanced Family Sized Accommodation in Excellent Condition, Situated on a Quiet Cul-de-Sac within Walking Distance to the Village Amenities.



Whether moving up or down the property ladder, serious consideration and inspection of the extremely surprising is absolutely essential to appreciate its generous room dimensions and wonderful layout, its delightful, enclosed westerly facing garden with enjoys a good degree of privacy, and its quiet cul-de-sac position. Built in circa 1926 and extended in the 1980's the property offers the potential to move in immediately and then decorate to put your own stamp on it, while also providing potential to divide the large dual aspect master bedroom into 2 and therefore making giving the home four double bedrooms.

Situated on the small cul-de-sac where properties rather come to the market, with in easy walking distance to the popular village's range of amenities including first schools, the mini Co-op supermarket and independent shops, doctors surgery, public houses, green spaces, petrol station, Fish & Chip shop and Chinese takeaway, children's nursery, and the Church. The towns of Uttoxeter and Cheadle are both within easy commutable distance, as is the A50 dual carriageway linking the M1 & M6 motorways, plus the cities of Stoke-on-Trent and Derby.

**Accommodation:** A uPVC obscure double-glazed door and side lights open to the welcoming hallway, where stairs rise to the first floor and doors lead to the extended ground floor accommodation.

The front facing sitting room has a wide walk-in bay window and a corner display alcove, with a wide arch opening to the main living area which has a wall mounted living flame effect electric fire. Double glazed sliding patio doors open to the well-proportioned brick and double-glazed constructed conservatory, providing extra family living space overlooking the lovely garden with power and radiators, a tiled floor and two sets of doors providing direct access outside.

The refitted L-shaped dining kitchen has an arch into the conservatory providing an excellent flow to the principle reception rooms, ideal for daily family life and entertaining. Having an extensive range of base and eye level units with superior quartz worksurfaces and an inset sink unit set below a window overlooking the garden, a fitted gas hob with an extractor over and built-in Neff double electric oven, and an integrated fridge/freezer.

A front porch has a uPVC double glazed door and windows opening to the outside. Doors lead to the downstairs wc and the next versatile reception room, currently used as a formal dining room but alternatively making an ideal family room, games room, workspace or even ancillary accommodation, with uPVC double French doors to the front. Finally there is the utility area which has a range of base level and eye units with fitted worktops, an inset sink unit and space for white goods, a useful storage room, plus windows and a uPVC double glazed door to the rear garden.

To the first floor the landing doors lead to the three good sized bedrooms, all of which can easily accommodate a double bed and have an extensive range of fitted furniture. The exceptionally spacious dual aspect master bedroom providing potential to divide and make two smaller double bedrooms (subject to obtaining any necessary regulations/consents). The fully tiled family room has a white modern suite incorporating both a panelled spa bath and a separate double shower cubicle with mixer shower over. Finally there is the fully tiled separate wc, having a two piece suite and fitted storage.

**Outside:** To the rear the enclosed westerly facing garden has a natural stone effect paved patio providing a lovely seating and dining area, with dwarf walls and steps to the lawn which has well stocked borders containing a variety of shrubs and plants, a small pond and water feature, a greenhouse and a useful brick built stage area with hot & cold water (ideally if you pets). All enclosed to three sides, enjoying a good degree of privacy.

To the front is a garden also laid mainly to lawn, with well stocked borders containing a variety of shrubs, and a block paved driveway provides off road parking for several vehicles.

W3W – outnumber.skate.automatic

**Tenure:** Freehold (purchasers are advised to satisfy themselves as to the tenure via their legal representative).

**Please note:** It is quite common for some properties to have a Ring doorbell and internal recording devices.

**Property construction:** Standard **Parking:** Driveway **Electricity supply:** Mains **Water supply:** Mains

**Sewerage:** Mains **Heating:** Mains gas (Purchasers are advised to satisfy themselves as to their suitability).

**Broadband type:** TBC

See Ofcom link for speed: <https://checker.ofcom.org.uk/>

**Mobile signal/coverage:** See Ofcom link <https://checker.ofcom.org.uk/>

**Local Authority/Tax Band:** Staffordshire Moorlands District Council / Tax Band D

**Useful Websites:** [www.gov.uk/government/organisations/environment-agency](http://www.gov.uk/government/organisations/environment-agency)

**Our Ref:** JGA09022026





John German



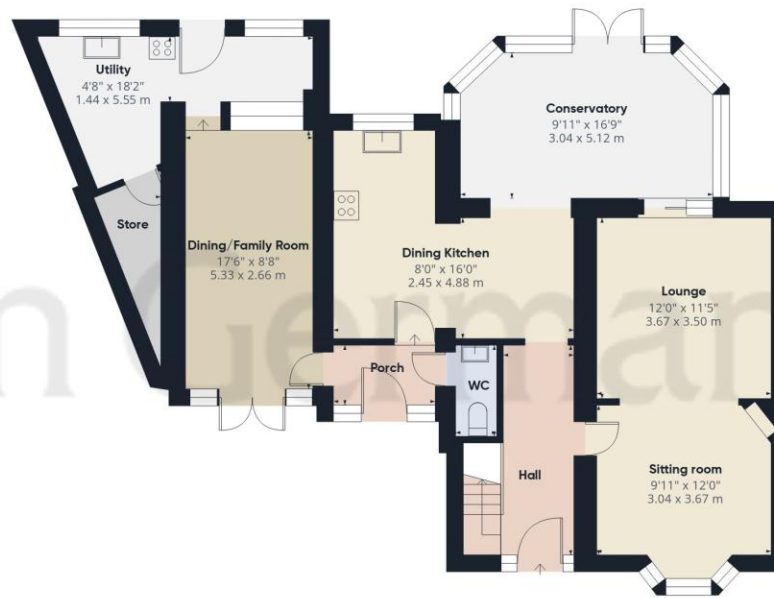
John German



John German



John German



Ground Floor

Approximate total area<sup>m</sup>  
 1767 ft<sup>2</sup>  
 164.2 m<sup>2</sup>



Floor 1



(1) Excluding balconies and terraces

Calculations reference the RICS IPMS 3C standard. Measurements are approximate and not to scale. This floor plan is intended for illustration only.

GIRAFFE360



John German

### Agents' Notes

These particulars do not constitute an offer or a contract neither do they form part of an offer or contract. The vendor does not make or give and Messrs. John German nor any person employed has any authority to make or give any representation or warranty, written or oral, in relation to this property. Whilst we endeavour to make our sales details accurate and reliable, if there is any point which is of particular importance to you, please contact the office and we will be pleased to check the information for you, particularly if contemplating travelling some distance to view the property. None of the services or appliances to the property have been tested and any prospective purchasers should satisfy themselves as to their adequacy prior to committing themselves to purchase.

### Referral Fees

**Mortgage Services** - We routinely refer all clients to APR Money Limited. It is your decision whether you choose to deal with APR Money Limited. In making that decision, you should know that we receive on average £60 per referral from APR Money Limited.

**Conveyancing Services** - If we refer clients to recommended conveyancers, it is your decision whether you choose to deal with this conveyancer. In making that decision, you should know that we receive on average £150 per referral.

**Survey Services** - If we refer clients to recommended surveyors, it is your decision whether you choose to deal with this surveyor. In making that decision, you should know that we receive up to £90 per referral.

The property information provided by John German Estate Agents Ltd is based on enquiries made of the vendor and from information available in the public domain. If there is any point on which you require further clarification, please contact the office and we will be pleased to check the information for you, particularly if contemplating travelling some distance to view the property. Please note if your enquiry is of a legal or structural nature, we advise you to seek advice from a qualified professional in their relevant field.

We are required by law to comply fully with The Money Laundering Regulations 2017 and as such need to complete AML ID verification and proof / source of funds checks on all buyers and, where relevant, cash donors once an offer is accepted on a property. We use the Checkboard app to complete the necessary checks, this is not a credit check and therefore will have no effect on your credit history. With effect from 1<sup>st</sup> March 2025 a non-refundable compliance fee of £30.00 inc. VAT per buyer / donor will be required to be paid in advance when an offer is agreed and prior to a sales memorandum being issued.

AWAITING EPC MEDIA



John German

9a Market Place, Uttoxeter, Staffordshire, ST14 8HY

01889 567444

uttoxeter@johngerman.co.uk

Ashbourne | Ashby de la Zouch | Barton under Needwood  
Burton upon Trent | Derby | East Leake | Lichfield  
Loughborough | Stafford | Uttoxeter

JohnGerman.co.uk Sales and Lettings Agent



