



Connells

Old Meeting Road
Coseley Bilston



Property Description

Connells Estate Agents are delighted to present this well-maintained two-bedroom freehold home, offered for sale with no upward chain and ideally situated within walking distance of Coseley Train Station.

This attractive property is perfect for first-time buyers, investors, or those looking to downsize, benefiting from excellent transport links and a range of local amenities nearby.

The ground floor comprises two spacious and tastefully decorated reception rooms, providing versatile living and dining space. To the rear, the modern fitted kitchen offers ample storage, plumbing for a washing machine, space for additional appliances, and direct access to the rear garden. Upstairs, the property features two generously sized bedrooms and a contemporary family bathroom finished with modern tiling and fittings.

Externally, the property enjoys a rear garden, ideal for relaxing or entertaining.

Conveniently located close to local shops, schools, and major road networks, this home offers excellent commuter links alongside comfortable everyday living. Viewing is highly recommended to fully appreciate the accommodation on offer.

Location & Area

Being close to local amenities and schools within the Coseley area along with the train station. Birmingham New Road gives access into Wolverhampton and Birmingham City centre and also links the Black Country route.

Lounge

13' 4" max x 12' 2" max (4.06m max x 3.71m max)

Double glazed window to the front, laminate flooring, ceiling light point, radiator and door to the dining room.

Dining Room

13' 4" x 9' (4.06m x 2.74m)

Double glazed window to the rear, stairs to the first floor, laminate flooring, ceiling light point, radiator and door to the kitchen.

Kitchen

15' 11" x 7' 8" (4.85m x 2.34m)

Fully fitted kitchen with a range of wall, base and drawer units with laminate worktops, double glazed windows to the side and rear, tiled splash back, sink with drainer, integrated cooker, space for appliances and plumbing for a washing machine, ceiling spotlights, central heating boiler and double glazed door leading to the rear garden.

Landing

Ceiling light point and doors leading to the bedrooms and bathroom..

Bedroom One

14' 1" x 12' (4.29m x 3.66m)

Double glazed window to the front, ceiling light point and a radiator.

Bedroom Two

12' 1" x 8' 8" (3.68m x 2.64m)

Double glazed window to the rear, ceiling light point and a radiator.

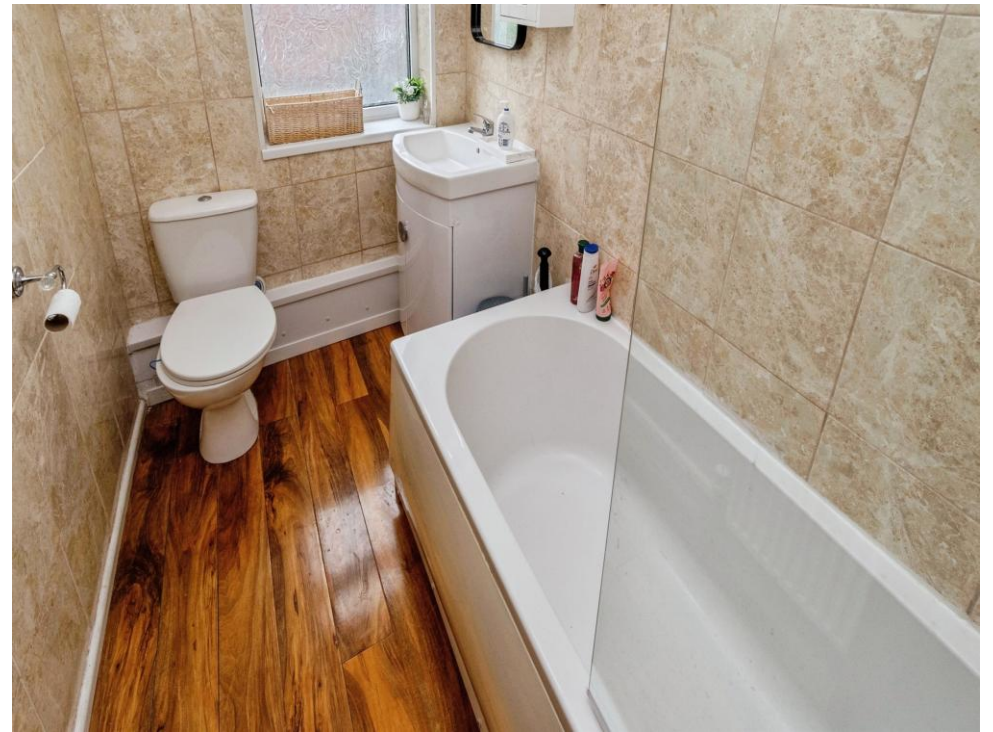
Bathroom

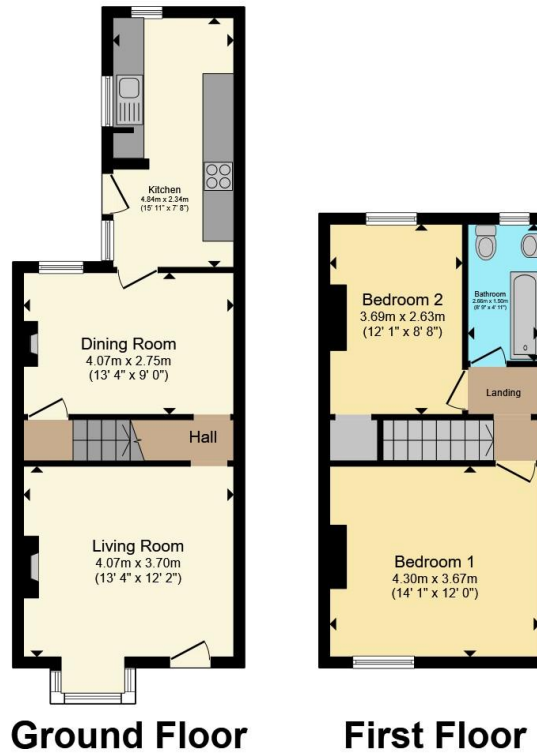
Double glazed window to the rear, bath with shower over, W/C, wash hand basin with vanity, tiled walls, laminate flooring and a ceiling light point.

Rear Garden

Block paved patio, gravelled area and gate to the side access leading to the front of the property.







Total floor area 76.9 m² (828 sq.ft.) approx

This floor plan is for illustrative purposes only. It is not drawn to scale. Any measurements, floor areas (including any total floor area), openings and orientation are approximate. No details are guaranteed, they cannot be relied upon for any purpose and they do not form part of any agreement. No liability is taken for any error, omission or misstatement. A party must rely upon its own inspection(s). Powered by www.propertybox.io



To view this property please contact Connells on

T 01902 710 170
E wolverhampton@connells.co.uk

81-83 Darlington Street
 WOLVERHAMPTON WV1 4EX

EPC Rating: D Council Tax
 Band: A

Tenure: Freehold

view this property online connells.co.uk/Property/WVH335814



1. MONEY LAUNDERING REGULATIONS Intending purchasers will be asked to produce identification documentation at a later stage and we would ask for your co-operation in order that there will be no delay in agreeing the sale. 2. These particulars do not constitute part or all of an offer or contract. 3. The measurements indicated are supplied for guidance only and as such must be considered incorrect. Potential buyers are advised to recheck measurements before committing to any expense. 4. We have not tested any apparatus, equipment, fixtures, fittings or services and it is in the buyers interest to check the working condition of any appliances.

Connells Residential is registered in England and Wales under company number 1489613, Registered Office is Cumbria House, 16-20 Hockliffe Street, Leighton Buzzard, Bedfordshire, LU7 1GN. VAT Registration Number is 500 2481 05.

See all our properties at www.connells.co.uk | www.rightmove.co.uk | www.zoopla.co.uk

Property Ref: WVH335814 - 0004