



DUPLEX APARTMENT

VIRIDIUM APARTMENTS

HAMPSTEAD NW3

DUPLEX APARTMENT

VIRIDIUM APARTMENTS

Enjoy a bright, design-led duplex where generous proportions meet a calm, contemporary finish. The sociable kitchen with statement island and integrated appliances flows naturally into a relaxed reception space, ideal for hosting or unwinding. Three inviting bedrooms include a principal suite with sleek en-suite, alongside a refined family bathroom with hotel-style detailing. With private outdoor space and a polished neutral palette throughout, this NW3 home offers effortless modern living in a sought-after setting.



DUPLEX APARTMENT

VIRIDIUM APARTMENTS

FINCHLEY ROAD, HAMPSTEAD

An airy two-storey duplex apartment offering generous living and bedroom space. The lower ground floor boasts a bright open-plan reception room with a fitted kitchen, opening onto a substantial private patio. Stairs lead to the ground floor, where there are three well-proportioned bedrooms, including a main bedroom with an en-suite, plus a family bathroom. The layout provides excellent flow for modern living and entertaining, with contemporary fittings and superb value for a coveted NW3 address.



3 BEDS



1 RECEPTION



2 BATHS



EPC: B (90)



1,378 SQFT



C.TAX: G (£3,511 pa)

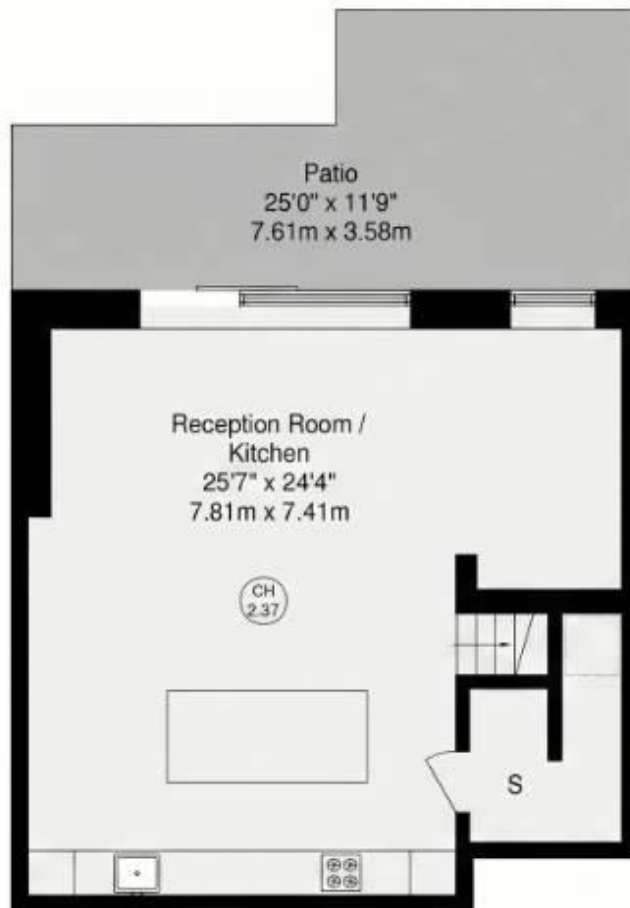
RENTAL PRICE

£4,749 pcm
£1,096pw

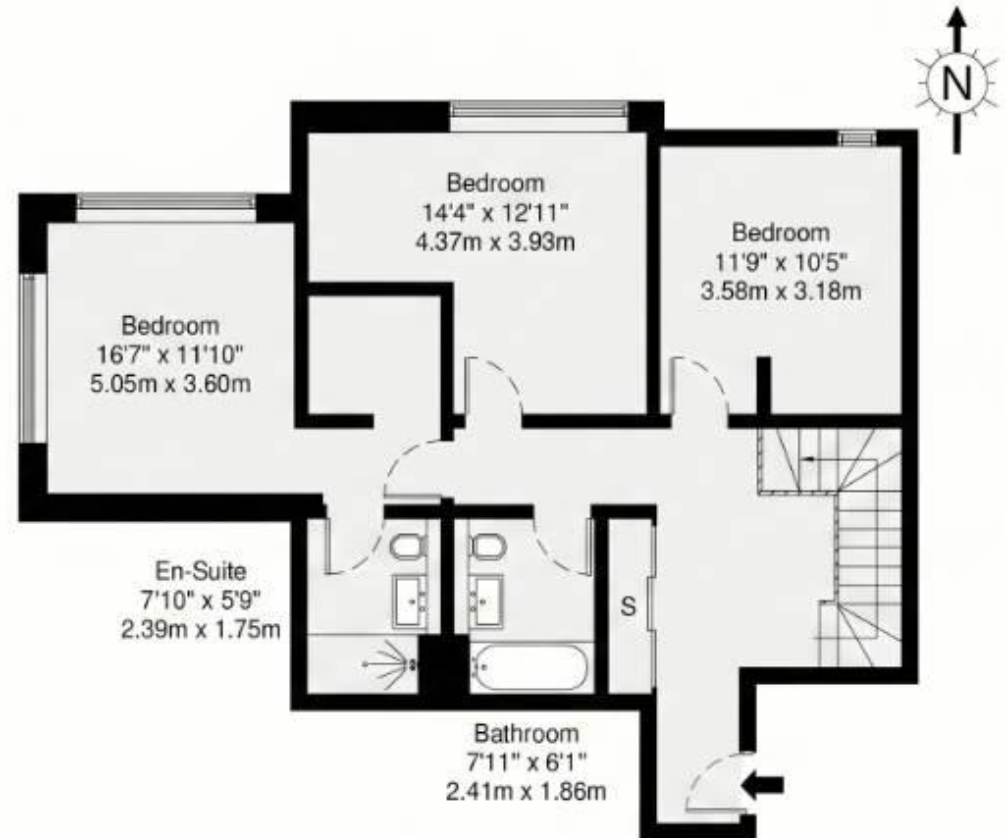
FLOORPLAN

Viridium Apartments, Finchley Road, NW3

GROSS INTERNAL AREA
128.1 sq m / 1378 sq ft



Lower Ground Floor



Ground Floor





LIVING ROOM

An expansive, contemporary living area blends relaxed seating with a seamless indoor-outdoor flow. A plush grey sofa and accent chairs are arranged around a glass coffee table, set on a light-toned rug. Large glass doors reveal a private deck and lawn, filling the room with natural light. The space is finished in a neutral palette with recessed lighting for a calm, modern feel. A separate dining nook sits nearby, creating a versatile entertaining zone.

SPECIFICATIONS

- Open-plan living area with central island and bar seating.
- Bright, neutral palette enhances space and light.
- Luxurious grey upholstery with accent cushions.
- Large glass doors to private deck and lawn.
- Recessed LED lighting throughout for ambience.
- Wood floors complement modern decor.



KITCHEN

A bright, contemporary kitchen with cream base cabinets, timber upper units, and a large island. Under-cabinet lighting and a glass splashback create a sleek, luminous workspace. Integrated appliances include a full-height fridge-freezer, oven, hob, dishwasher and coffee machine. A breakfast bar provides casual seating and opens to the adjoining living area.

SPECIFICATIONS

- Generous island offers extra workspace and casual dining.
- Timber-effect upper cabinets add warm, modern contrast.
- Under-cabinet lighting enhances task visibility.
- Integrated appliances keep a sleek, clutter-free design.
- Glass splashback reflects light for a bright feel.
- Breakfast bar seats four for social dining.





MASTER BEDROOM

Spacious master bedroom featuring a comfortable double bed framed by matching bedside tables and lamps. Bright, airy space with large black-framed windows that offer garden views. Walk-in dressing room with wood shelving provides generous storage, while plush carpeting adds warmth. An en-suite bathroom enhances convenience for daily routines.

SPECIFICATIONS

- Bright master bedroom with a large double bed.
- Walk-in dressing room with ample storage.
- Twin bedside tables with matching lamps.
- Large black-framed windows flood room with light.
- En-suite bathroom for private convenience.
- Neutral decor and plush carpeting.





ENSUITE BATHROOM

Luxurious ensuite bathroom featuring a walk-in shower with sliding glass doors and chrome fittings. A wall-mounted wooden vanity supports a white rectangular basin, complemented by a sleek mixer. Large-format grey tiles coat the walls and floor, creating a spa-like, contemporary feel. The compact design emphasises clean lines and practical storage for a clutter-free space.

SPECIFICATIONS

- Walk-in shower with sliding glass doors.
- Chrome fittings throughout for a sleek finish.
- Wall-mounted wooden vanity with white basin.
- Grey large-format wall tiles for contemporary appeal.
- Bright, well-lit space with clean lines.
- Tiled flooring complements walls for cohesive look.



SECOND BEDROOMS

Two bright, tranquil second bedrooms share a plush neutral palette and generous natural light, creating a calm, restful feel. Floor-to-ceiling curtains frame wide windows with garden views. Mirrored wardrobes provide built-in storage and help reflect light across each room.



SPECIFICATIONS

- Two bright double bedrooms with large windows and garden views.
- Calm neutral decor and soft, luxurious textiles.
- Elegant features create a hotel-like feel.
- Built-in mirrored wardrobes maximise space and light.
- Ideal as bedrooms, home office, or guest space



FAMILY BATHROOM

Luxurious contemporary bathroom finished with large-format grey porcelain tiles for a clean, minimalist look. A generous bath sits beside a glass shower screen, complemented by a wall-mounted mixer and handheld shower. A slim, wall-hung wooden vanity with a white basin provides practical storage and a warm contrast to the cool tiling. Recessed ceiling lights and a concealed dual-flush toilet complete the sleek, hotel-like ambience in this stylish space.

SPECIFICATIONS

- Large-format grey tiles throughout.
- Wall-hung timber vanity with white basin.
- Bath with glass shower screen and handheld shower.
- Concealed dual-flush toilet for minimal lines.
- Recessed ceiling lights for bright, even illumination.
- Chrome fittings and towel storage complete the look.

ABOUT NH PROPERTIES

At NH Properties, we understand the importance of finding a home that matches your lifestyle and expectations. With extensive experience in the **North West London** and **Canary Wharf** markets, We specialise in curating exceptional properties for discerning tenants. Our team is dedicated to delivering a seamless, **high-quality experience**, ensuring every detail is managed with care and professionalism. We are committed to excellence and our expertise ensures properties are presented to the highest standard, attracting premium tenants and optimising income for clients.

NICHOLAS HART

FOUNDER

- 📞 0203 602 2525
- ✉ info@nh-properties.co.uk
- 🌐 nh-properties.co.uk
- 📍 Hillview House, 1 Hallswelle
Parade, London NW11 0DL

CALL US TODAY!



PROPERTIES



NICHOLAS HART

NH PROPERTIES

0203 602 2525

info@nh-properties.co.uk

nh-properties.co.uk

