



15 Bridgecote Lane, Noak Bridge – SS15 4BW

£165,000 Leasehold

Council Tax band: A ~ EPC Energy Efficiency Rating: C

Beautifully presented one bedroom ground floor apartment, situated in a desirable retirement development for the over 55's, in the heart of sought after Noak Bridge Village. This inviting home has been thoughtfully designed to offer comfort, convenience, with a wonderful sense of community within the complex.



tyler estates

01277 626181

www.tylerestates.co.uk



Entrance Hall

Lounge / Diner

19' 4" x 11' 10" (5.90m x 3.61m)

Kitchen

7' 10" x 8' 10" (2.38m x 2.70m)

Bedroom

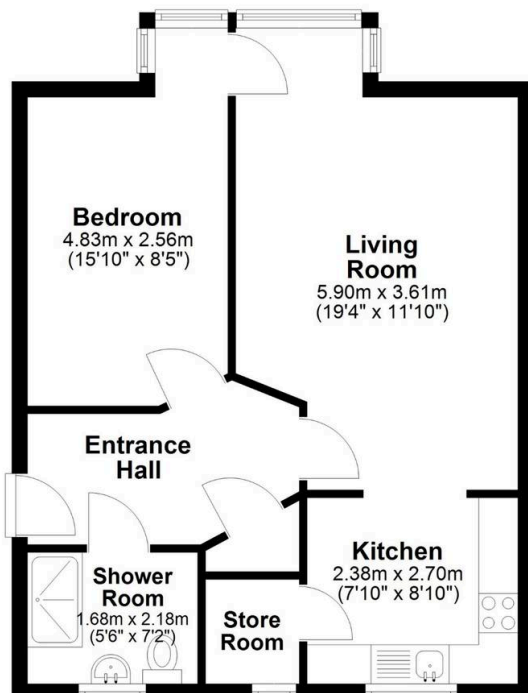
15' 10" x 8' 5" (4.83m x 2.56m)

Shower Room

5' 6" x 7' 2" (1.68m x 2.18m)



Ground Floor



tyler estates



APPROX INTERNAL FLOOR AREA
49 SQ M (530 SQ FT)
This floorplan is for illustrative purposes only and is **NOT TO SCALE**
All measurements are approximate
NOT to be used for valuation purposes
Copyright Tyler Estates 2026