



Bradfield Hall, Bury St. Edmunds, IP30 0LU

Rent - £1,215 PCM Deposit - £1,401

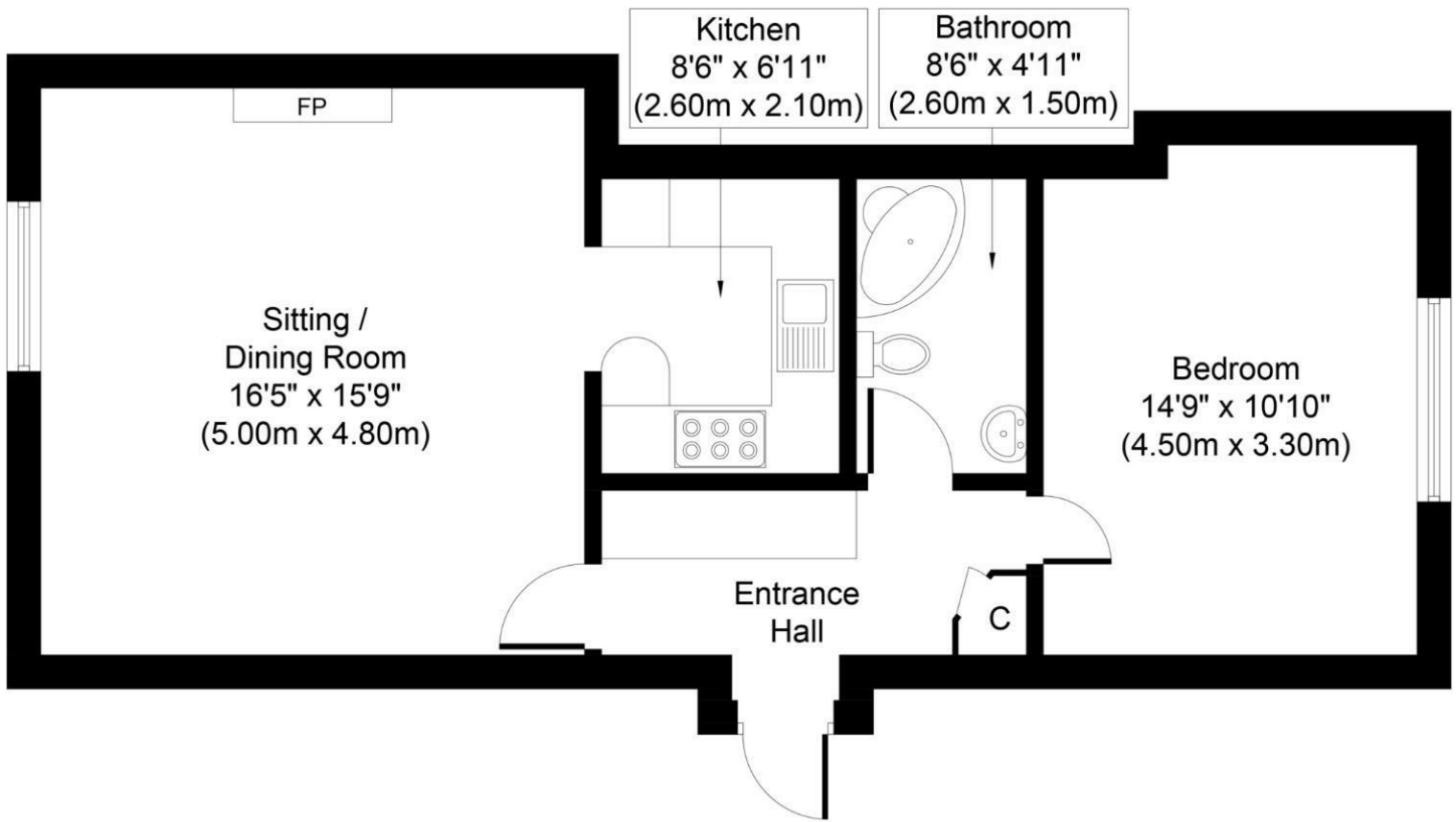
Occupying a first floor position within an impressive Grade II listed hall, this well-presented apartment offers spacious accommodation in an attractive rural setting. The property combines the character of a period home with the convenience of modern-day living, making it an appealing option for a range of tenants or purchasers.

The accommodation comprises a generous principal bedroom, a substantial sitting/dining room, a well-appointed kitchen and a bathroom. Character features remain evident throughout, including elegant cornicing and feature

- DOUBLE BEDROOM
- GRADE II LISTED FIRST FLOOR APARTMENT
- ACCESS TO A 24/7 GYM, HEATED SWIMMING POOL AND TENNIS COURT
- PEACEFUL COUNTRYSIDE SETTING
- COUNCIL TAX BAND - B
- BEAUTIFULLY CONVERTED HISTORIC HALL
- SURROUNDED BY APPROXIMATELY 18 ACRES OF COMMUNAL GROUNDS
- TWO ALLOCATED PARKING SPACES
- EPC RATING - E
- EARLY VIEWING ADVISED



Council Tax Band: B - EPC Rating: E 44



Approximate Floor Area
602 Sq. ft.
(55.9 Sq. m.)

Whilst every attempt has been made to ensure the accuracy of the floor plan contained here, measurements of doors, windows, rooms and any other items are approximate and no responsibility is taken for any error, omission, or mis-statement. The measurements should not be relied upon for valuation, transaction and/or funding purposes. This plan is for illustrative purposes only and should be used as such by any prospective purchaser or tenant. The services, systems and appliances shown have not been tested and no guarantee as to their operability or efficiency can be given.
 Copyright V360 Ltd 2023 | www.houseviz.com

